



CATALOG

- 03 **About Us**
- 05 **Receipt Printer**
- 27 **Portable Receipt Printer**
- 37 **Panel Receipt Printer**
- 53 **Embedded Printing Unit**

Enterprise

Introduction

About us

Clients recognize us as an industry leader since 1999, and our panel printer series currently holds a 30% market share in China.

Our international distribution network already spans the globe. With long history experience, SPRT makes it easy for you to find a right printer for right application. When it comes to quality, reliability and durability, you know, you can depend on SPRT.

Certificate

Our factory is ISO9001:2000-certified factory. The products are approved by CCC, CE and RoHS.

OEM/ODM orders are welcome

For your customized project, you can totally trust our 40 R&D engineers. They can do a satisfactory job according to every your requirements.

Delivery in as fast as two weeks

With advanced SMT workshop, two perfect working flows and 200 workers, makes lead time of your order can be guaranteed.

OUR Customers

With the great development and excellent marketing team, SPRT has sold its products all over the world, including Southeast Asia, Europe, South American, Middle East and Africa. It has cooperated with over 1000 companies with an annual sales of over 700000 units. For more than a decade, SPRT has always been stepping ahead of the printing industry.

Based on reality and down-to-earth efforts, aiming at international advanced standard, market-oriented as always, SPRT keeps launching high quality products to customers continuously to become the domestic leading and world top-class receipt printer typical enterprise.



Receipt Printer

With high quality and perfect sales service, the POS series printers became preferable choice by distributor, reseller and end-users from domestic and overseas market. And they can be found in supermarket, restaurant, hotel, bank and so on.



◆ SP-POS58IV



Features:

- Big gear, Big motor, Big paper roll
- Print head 2 years warranty
- High speed printing
- Easy to use and simple to maintain
- TPH life 60KM



Catering



TAX



POS

Specification



Printing Method	Thermal Line	
Resolution	8 dots/mm(203dpi), 384 dots/line	
Printing Speed	70mm/s	
Character Set	ASCII, GB18030(Chinese), BIG5, Codepage	
Print Font	GB180230: 24x24; ASCII: 12x24, 9x17	
Self-defined Character	Yes	
Barcode	1D	UPC-A, UPC-E, EAN-13, EAN-8, CODE39, ITF25, CODEBAR, CODE93, CODE128
	2D	PDF417, QR CODE, DATA MATRIX
Interface	Serial/USB/Parallel/USB+Ethernet/USB+Bluetooth(2.0/4.0)	
Cash Drawer Control	DC12V, 1A,6PIN RJ-11Socket	
Power Supply (Adapter)	DC12V±10%, 2A	
TPH	60KM	
Paper Type	Thermal Paper	
Effective Printing Width	48mm	
Paper Width	57.5±0.5mm	
Paper Thickness	0.06-0.08mm	
Paper Roll Diameter	80mm (MAX)	
Paper Supply Method	Drop-in Easy Loading	
Paper Cutting Method	Manual	
Operating Temp/Humidity	0~50°C /10%~80%	
Storage Temp/Humidity	-20~60°C /10%~90%	
Dimension	210mmx145mmx126mm(LxWxH)	
Weight	898g (NO Paper)	

◆ SP-POS58V



Features:

- Auto recognize USB interface
- Versatile and adaptable
- Paper end sensor
- Smart size and easy to use



Retail



Receipt



POS

Specification



Printing Method	Thermal Line
Resolution	8 dots/mm(203dpi), 384 dots/line
Printing Speed	50mm/s
Character Set	ASCII, GB18030(Chinese), BIG5, Codepage
Print Font	GB180230: 24x24; ASCII: 12x24, 9x17
Self-defined Character	Yes
Barcode	UPC-A, UPC-E, EAN-13, EAN-8, CODE39, ITF25, CODEBAR, CODE93, CODE128
Interface	Serial/Serial+USB/USB+Bluetooth(2.0/4.0)
Power Supply (Adapter)	DC 7.5V±10%, 2A
TPH	50KM
Paper Type	Thermal Paper
Effective Printing Width	48mm
Paper Width	57.5±0.5mm
Paper Thickness	0.06-0.08mm
Paper Roll Diameter	60mm (MAX)
Paper Supply Method	Drop-in Easy Loading
Paper Cutting Method	Manual
Operating Temp/Humidity	0~50°C /10%~80%
Storage Temp/Humidity	-20~60°C /10%~90%
Dimension	150mmx122mmx93.5mm(LxWxH)
Weight	382g (NO Paper)

◆ POS588



Features:

- High speed
- Triple connection interfaces
- Modern design



Catering



TAX



POS

Specification



Printing Method	Thermal Line	
Resolution	Thermal Line 8 dots/mm	
Printing Speed	80mm/s (Max)	
Effective Printing Width	48mm	
TPH	50km	
Paper Width	57.5±0.5mm	
Paper Type	Normal Thermal Paper	
Paper Size	Max 58mm×Ø60mm	
Paper Thickness	0.06mm~0.08mm	
Driver	Windows/JPOS/OPOS/Linux/Android	
Print Font	Codepage; ANK: 9 x17 / 12 x24; Chinese: 24 x 24	
Barcode	1D	UPC-A、UPC-E、EAN-13、EAN-8、CODE39、ITF25、CODABAR、CODE93、CODE128
	2D	PDF417、QR Code、DATA Matrix
Interface	USB+Bluetooth(2.0/4.0)/USB+WIFI (2.4G)/USB+4G	
Power Supply	DC8.5V±10% , 3A	
Operating Temp/Humidity	0~50°C /10~80%	
Outline Dimension	143x103x103mm(L×W×H)	
Storage Temp/Humidity	-20~60°C /10~90%	

◆ SP-POS5813/5814



Features:

- Real-time self-test, intelligent prompts
- Top paper out design, safe and durable
- Mini, compact and light weight
- Multiple interfaces



Catering



Receipt



Retail

Specification



Printing Method	Thermal Line
Resolution	8 dots/mm(203dpi), 384 dots/line
Printing Speed	90mm/s
Character Set	ASCII, GB18030(Chinese), BIG5, Code page
Print Font	12X24; Font B: 9X17; Font C: 24X24
Self-defined Character	Yes
Barcode	1D: UPC-A, UPC-E, EAN-13, EAN-8, CODE39, ITF25, CODABAR, CODE93, CODE128; 2D: PDF417, QR CODE, DATA Matrix
Interface	USB/Parallel/Serial/Ethernet/Bluetooth
Power Supply (Adapter)	DC8.5V,2A
TPH	50KM
Paper Type	Thermal Paper
Effective Printing Width	48mm
Paper Width	57.5±0.5mm
Paper Thickness	0.06-0.08mm
Paper Roll Diameter	60mm (MAX)
Paper Supply Method	Drop-in Easy Loading
Paper Cutting Method	Manual
Operating Temp/Humidity	0~50°C /10%~80%
Storage Temp/Humidity	-20~60°C /10%~90%
Dimension	120mmx100mmx98mm(LxWxH)
Weight	275g (NO Paper)

◆ SP-POS764



Features:

- Auto paper feeding
- Avoid paper jam design
- Multi-interface
- 9 pin bidirectional printing
- Black mark sensor support



Retail



TAX



Garment

Specification



Printing Method	Dot Matrix
Character Per Line	42/35
Printing Speed	76mm Paper Width: 4.4 lps ; 57.5mm Paper Width: 5.6 lps
Character Set	ASCII, GB18030(Chinese), BIG5, Codepage
Print Font	Font A:7x9; Font B:9x9 ; Font C:16x16
Self-defined Character	Yes
Interface	Serial/USB/Serial+USB+Ethernet
Cash Drawer Control	DC24V, 1A, 6PIN RJ-11Socket
Power Supply (Adapter)	AC(100-240)V±10%, 50/60Hz, 1.5A
MCBF	7.5 Million Characters
Paper Type	Normal Paper/ Blackmark Paper/Duplicating Paper
Paper Width	76.5±0.5mm / 57.5mm±0.5mm
Paper Thickness	0.06-0.08mm
Paper Roll Diameter	80mm (MAX)
Paper Supply Method	Auto-feeding
Auto Cutter	Partial Cut/Full Cut
Paper Cutting Method	Manual or Auto cut
Driver	Windows XP/Windows Vista/Windows 7 /Windows 8/10/ Linux/OPOS
Operating Temp/Humidity	0~50°C /10%~80%
Storage Temp/Humidity	-20~60°C /10%~90%
Dimension	248mmx158mmx140.5mm(LxWxH)

◆ SP-POS88V



Features:

- High speed of printing up to 250mm/s
- Firmware online updating available
- 2D barcode printing support
- Avoid to lose data design



Insurance



Garment



Retail

Specification



Printing Method	Thermal Line	
Resolution	8 dots/mm(203dpi), 576 dots/line	
Printing Speed	250mm/s	
Character Set	ASCII, GB18030(Chinese), BIG5, Codepage	
Print Font	Font A: 12x24; Font B: 9x17	
Self-defined Character	Yes	
Barcode	1D	UPC-A, UPC-E, EAN-13, EAN-8, CODE39, ITF25, CODEBAR, CODE93, CODE128
	2D	PDF417, QR CODE, DATA MATRIX
Interface	Serial/USB/Ethernet/Parallel/RS232+USB+Ethernet/USB+Ethernet+WiFi(2.4G)/USB+Bluetooth(2.0/4.0)	
Cash Drawer Control	DC 24V, 1A, 6PIN RJ-11 Socket	
Power Supply (Adapter)	DC24V±10%, 2A	
TPH	150KM	
Paper Type	Thermal Paper	
Effective Printing Width	72mm	
Paper Width	79.5±0.5mm	
Paper Thickness	0.06-0.08mm	
Paper Roll Diameter	80mm (MAX)	
Auto Cutter	1,500,000 cuts	
Driver	Windows/JPOS/OPOS/Linux/Android	
Operating Temp/Humidity	0~50°C /10%~80%	
Storage Temp/Humidity	-20~60°C /10%~90%	
Weight /Dimension	1500g (NO Paper) /200mm×150mm×139mm(LxWxH)	

◆ SP-POS88VI



Features:

- Automatic memory printing
- Printing speed setting support
- Anti-electromagnetic interference level 3
- Paper cover and cutter error being detected



Receipt



Catering



Garment

Specification



Printing Method	Thermal Line	
Resolution	8 dots/mm(203 dpi), 576 dots/line	
Printing Speed	250mm/s	
Character Set	ASCII, GB18030(Chinese), BIG5, Codepage	
Print Font	GB18030: 24x24 ASCII: 12x24, 7x9	
Self-defined Character	Yes	
Barcode	1D	UPC-A, UPC-E, EAN-13, EAN-8, CODE39, ITF25, CODEBAR, CODE93, CODE128
	2D	PDF417, QR CODE, DATA MATRIX
Interface	Serial/USB/Ethernet/Parallel/RS232+USB+Ethernet/USB+Ethernet+WiFi(2.4G)/USB+Bluetooth(2.0/4.0)	
Cash Drawer Control	DC24V, 1A, 6PIN RJ-11Socket	
Power Supply (Adapter)	DC 24V±10%, 2A	
TPH	150KM	
Paper Type	Thermal Paper	
Effective Printing Width	72mm	
Paper Width /Thickness	79.5±0.5mm /0.06-0.08mm	
Paper Roll Diameter	80mm (MAX)	
Auto Cutter	1,500,000 cuts	
Operating Temp/Humidity	0~50°C /10%~80%	
Storage Temp/Humidity	-20~60°C /10%~90%	
Dimension	212mm×150mm×135mm(L×W×H)	
Weight	1456g(NO Paper)	
Diver	Windows/JPOS/OPOS/Linux/Android	

◆ SP-POS890



Features:

- New beautiful appearance
- Improved function and performance
- Firmware online updating available
- Avoid to lose data design



Catering



TAX



Garment

Specification



Printing Method	Thermal Line	
Resolution	8 dots/mm(203 dpi), 576 dots/line	
TPH/Cutter Life	150KM/1,500,000 cuts	
Printing Speed	250mm/s	
Character Set	ASCII, GB18030(Chinese), BIG5, Codepage	
Print Font	GB18030: 24x24 ASCII: 12x24, 7x9	
Graph Printing	Diagram, download bitmap supported	
Self-defined Character	Yes	
Barcode	1D	UPC-A, UPC-E, EAN-13, EAN-8, CODE39, ITF25, CODEBAR, CODE93, CODE128
	2D	PDF417, QRCODE, DATAMATRIX
Interface	Serial+USB/USB+Ethernet/USB+LAN+Bluetooth(4.0)+WIFI(2.4G/5G)	
Cash Drawer Control	DC24V, 1A, 6Pin RJ-11 Socket	
Power Supply (Adapter)	DC24V±10%, 1.5A	
Effective Printing Width	72 mm/48mm	
Paper Type	Normal thermal paper 79.5mm×φ80, 57.5mm×φ80	
Paper Thickness	0.06-0.08mm	
Paper Installation	Drop-in Easy Loading	
Paper Cutting Method	Full Cut/ Patrial Cut	
Command	ESC/POS	
Dimension	185mm×150mm×123mm(L×W× H)	
Operating Temp/Humidity	0~50°C /10%~80%	
Storage Temp/Humidity	-20~60°C /10%~90%	

◆ SP-POS891/892



Features:

- Super Low Cost
- Firmware online updating available
- Support hang up on the wall



Catering



Garment



Retail

Specification



Printing Method	Thermal Line	
Resolution	8 dots/mm(203 dpi), 576 dots/line	
Paper Type	Normal Thermal Paper	
Printing Speed	200 mm/s	
Character Set	ASCII, GB18030(Chinese), BIG5, Codepage	
Print Font	Font A: 12x24; Font B: 9x17	
Self-defined Character	Yes	
Barcode	1D	UPC-A, UPC-E, EAN-13, EAN-8, CODE39, ITF25, CODEBAR, CODE93, CODE128
	2D	PDF417, QR CODE, DATA MATRIX
Interface	USB/USB+Ethernet/USB+Bluetooth	
Cash Drawer Control	DC24V,1 A; 6 PIN RJ-11 socket	
Power Supply (Adapter)	DC24V±10%, 2A	
TPH	150KM	
Effective Printing Width	72 mm/48mm	
Paper Width	79.5±0.5mm/57.5±0.5mm	
Paper Thickness	0.06-0.08mm	
Paper Size	Max 80 mm × Ø80mm/Max 58 mm × Ø80	
Auto Cutter	1,500,000 cuts	
Driver	Windows/JPOS/OPOS/Linux/Android	
Operating Temp/Humidity	0~50°C /10~80%	
Storage Temp/Humidity	-20~60°C /10%~90%	
Dimension	179mm × 152mm × 118mm(LxWxH)	

◆ SP-POS893/894



Features:

- Modern design
- Low price with high quality
- Support hang up on the wall



Retail



Take Away



Testing

Specification



Printing Method	Thermal Line	
Resolution	Thermal Line 8 dots/mm	
TPH/Cutter Life	150KM/1,500,000 cuts	
Printing Speed	200mm/s	
Character Set	ASCII, GB18030(Chinese), BIG5, Codepage	
Print Font	Codepage; ANK: 9 x17 / 12 x24; Chinese: 24 x 24	
Graph Printing	Diagram, download bitmap supported	
Self-defined Character	Yes	
Barcode	1D	1D: UPC-A、UPC-E、EAN-13、EAN-8、CODE39、ITF25、CODABAR、CODE93、CODE128
	2D	PDF417、QRCODE、Data Matrix
Interface	USB/USB+Ethernet	
Cash Drawer Control	DC24V,1 A; 6 PIN RJ-11 socket	
Power Supply (Adapter)	DC24V±10%, 2A	
Effective Printing Width	72 mm/48mm	
Paper Type	Normal Thermal Paper	
Paper Thickness	0.06-0.08mm	
Paper Installation	Drop-in Easy Loading	
Paper Cutting Method	Full Cut/ Partial Cut	
Command	ESC/POS	
Dimension	179x152x118mm(L×W×H)	
Operating Temp/Humidity	5~50°C /10~80%	
Storage Temp/Humidity	-20~60°C /10~90%	

◆ SP-POS8810



Features:

- Professional Kitchen printer
- Anti-oild design
- Light and voice alarm



Retail



Catering



Testing

Specification



Printing Method	Thermal Line	
Resolution	Thermal Line 8 dots/mm	
TPH/Cutter Life	150KM/1,500,000 cuts	
Printing Speed	200mm/s	
Character Set	ASCII, GB18030(Chinese), BIG5, Codepage	
Print Font	Codepage; ANK: 9 x17 / 12 x24; Chinese: 24 x 24	
Driver	Windows/JPOS/OPOS/Linux/Android	
Self-defined Character	Yes	
Barcode	1D	UPC-A、UPC-E、EAN-13、EAN-8、CODE39、ITF25、CODABAR、CODE93、CODE128
	2D	PDF417、QRCODE、Data Matrix
Interface	USB+Ethernet/USB+LAN+RS232/USB+WIFI/USB+Bluetooth	
Cash Drawer Control	DC24V,1 A; 6 PIN RJ-11 socket	
Power Supply (Adapter)	DC24V±10%, 2A	
Effective Printing Width	79.5±0.5mm	
Paper Type	Normal thermal paper 79.5mm×φ80	
Paper Thickness	0.06-0.08mm	
Paper Installation	Drop-in Easy Loading	
Paper Cutting Method	Full Cut/ Partial Cut	
Command	ESC/POS	
Dimension	179x140x138mm(L×W× H)	
Operating Temp/Humidity	5~50°C /10~80%	
Storage Temp/Humidity	-20~60°C /10~90%	

◆ SP-POS8811



Features:

- Support voice broadcast function
- Integrated design of key board and main board
- Paper bin cover waterproof edge design
- onto the main board



Catering



Garment



Retail

Specification

Printing Method	Thermal Line
Resolution	8 dots/mm(203 dpi), 576 dots/line
Paper Type	Normal Thermal Paper
Printing Speed	200mm/s (25% printing density)
Spanish	12×24 points
Chinese	24×24 dots
Interface	USB+Ethernet
Support functions	Paper Out Alarm, Overheating Protection, Voice Broadcast
Cash Drawer Control	DC24V, 1A, 6-wire RJ-11 Socket
Power Requirements	DC24V±10%, 2A, A-1009-3P power socket
Paper Type	Thermal Paper 79.5×φ80mm (MAX)
Paper Thickness	0.06-0.08mm
Maximum Outer Diameter	φ80mm
Paper Width	79.5±0.5mm
Paper Loading Method	Easy Loading
Paper Cutting Method	Half Cut
Cutter Life	1,500,000 cuts
Print Head Life	150km
Operating Temp/Humidity	5~50°C /10~80%
Storage Temp/Humidity	-20~60°C /10%~90%
Dimension	165mm×120mm×119mm(L×W×H)

◆ SP-R301



Features:

- Multi-interface
- Anti-lost data design
- Anti-paper jam design
- Firmware online updating available



Catering



Take Away



Retail

Specification



Printing Method	Thermal Line	
Resolution	8 dots/mm(203 dpi), 576 dots/line	
Paper Type	Normal Thermal Paper	
Printing Speed	Max: 230mm/s	
Character Set	ASCII, GB18030(Chinese), BIG5, Codepage	
Print Font	Font A:12x24; Font B:9x17	
Self-defined Character	Yes	
Barcode	1D	UPC-A, UPC-E, EAN-13, EAN-8, CODE39, ITF25, CODEBAR, CODE93, CODE128
	2D	PDF417, QR CODE, DATA MATRIX
Interface	USB + Ethernet	
Cash Drawer Control	DC24V, 1A, 6PIN RJ-11 Socket	
Power Supply (Adapter)	DC24V±10%, 2A	
TPH	150KM	
Effective Printing Width	72mm	
Paper Width	79.5±0.5mm	
Thickness	0.06-0.08mm	
Auto Cutter	1,500,000 cuts	
Operating Temp/Humidity	0~50°C /10~80%	
Storage Temp/Humidity	-20~60°C /10%~90%	
Dimension	174mm×150mm×118mm(L×W×H)	
Driver	Windows/JPOS/OPOS/Linux/Android	

◆ SP-TL21N



Features:

- 1", 2" label size available
- Automatic label peeling for option
- Compatible with CPCL, ESC/POS, TSC command set



Garment



Receipt



Logistics

Specification



Printing Method	Thermal Line	
Resolution	8 dots/mm(203 dpi), 448dots/line	
Printing Speed	127mm/s (MAX)	
Effective Printing Width	48mm/56mm (Optional)	
Paper Width	(20-57.5)mm±0.5mm	
Printing Head Temp Detection	Yes	
Paper-out Sensor	Yes	
Barcode	1D	UPC-A, UPC-E, EAN-13, EAN-8, CODE39, ITF25, CODEBAR, CODE93, CODE128
	2D	PDF417, QR CODE, DATA MATRIX
Self-defined Character	Yes	
Graph Printing	Diagram, downloaded bitmap supported	
Character Set	ASCII, GB18030(Chinese), GB12345, Shift JIS(Japanese) BIGS, Codepage	
Print Font	GB18030: 12x24,16x16; ASCII: 12x24,8x16,9x17	
Interface	USB+Serial/USB+Ethernet/USB+Serial+Bluetooth(2.0/4.0)	
Other Functions	Paper-out Alarm, Black-mark Detection, Over-heat Protection, Buzzer	
Cash Drawer	DC12V, 1A, 6pin RJ-11 socket	
Power Supply	DC12V±5%, 2A	
Paper Type	Thermal Paper: Max 57.5xφ80mm , Min 57.5×φ13mm	
Paper Thickness	Normal thermal paper and black marked paper: 0.06mm-0.08mm Thermal label paper: 0.12mm-0.14mm (Ref Label Length ≥ 3cm)	
Paper Supply Method	Drop-in Easy Paper Loading	
Operating Temp/Humidity	0~50°C /10%~80%	
Storage Temp/Humidity	-20~60°C /10%~90%	
Paper Cutting Method	Manual, Auto-peel(Label Paper) for option	
Dimension/Weight	197mm×126mm×132mm(LxWxH) / 970g (NO Paper)	

◆ SP-TL24



Features:

- Support two printing modes Receipt/ Label
- 127mm/s ultra-high printing speed
- Out of paper alarm, overheat protection



Garment



Receipt



Logistics

Specification



Printing Method	Thermal Line	
Resolution	8 dots/mm (203dpi)	
Printing Speed	100mm/s (Thermal Label Paper); 127mm/s (Normal Thermal Paper)	
Effective Printing Width	48mm/56mm	
Paper Width	25-60mm	
Paper Roll Diameter	Max 56×Ø80mm	
Print Font	Codepage,: ANK: 9 x17 / 12 x24; Chinese: 24 x 24	
Barcode	1D	UPC-A, UPC-E, EAN-13, EAN-8, CODE39, ITF25, CODEBAR, CODE93, CODE128
	2D	PDF417, QR CODE, DATA MATRIX
Driver	Windows/Linux/Android	
Character Set	ASCII, GB18030(Chinese), GB12345, Shift JIS(Japanese) BIGS, Codepage	
Power Supply	DC12V±5% , 2A	
Interface	USB/USB+Bluetooth(2.0/4.0)	
Paper Thickness	0.06mm ~ 0.08mm(Normal Thermal Paper) 0.12~0.14mm(Thermal Label Paper)	
Operating Temp/Humidity	0~50°C /10~80%	
Storage Temp/Humidity	-20~60°C /10~90%	
Dimension	160mm×130mm×115mm(LxWxH)	
Weight	580g (NO Paper)	
TPH	50KM	

◆ SP-TL26



Features:

- Paper feeding front
- Zero waste for the first order
- Print speed 127mm/s, time saving and high efficiency



Garment



Receipt



Catering

Specification



Printing Method	Thermal Line	
Resolution	8 dots/mm (203dpi)	
Printing Speed	127 mm/s (Max)	
Effective Printing Width	48mm	
Paper Width	32-50mm	
Codepage	Support	
Print Font	GB18030: 24*24 dot; ASCII: 12*24 dot, 9*17 dot	
Barcode	1D	UPC-A, UPC-E, EAN-13, EAN-8, CODE39, ITF25, CODEBAR, CODE93, CODE128
	2D	QR CODE
Function	Lack of paper sensor, Open cover Alarm ;overheat protection	
Paper Type	50×φ80mm(MAX)	
Cash Drawer	DC12V,1A, Connector:RJ-11,6pins	
Power Supply	DC12V±10%, 2A, power socket	
Interface	USB/USB+Ethernet/USB+Bluetooth(2.0/4.0)	
Paper Thickness	Normal Label Paper: 0.12 ~ 0.15mm	
Command	Compatible with ESC/POS,TSPL commands	
Operating Temp/Humidity	0°C ~50°C /10%~80%	
Storage Temp/Humidity	-20°C~ 60°C /10% ~ 90%	
Dimension	185mm×116mm×125mm(LxWxH)	
Paper Supply Method	Drop-in Easy Paper Loading	
Paper Cutting Method	Manual, Auto-peel(Label Paper) for option	
TPH	30KM	

◆ SP-TL31



Features:

- Post-feeding and automatic paper suction
- No paper is wasted
- Support varies of order software



Retail



Storage



Logistics

Specification



Printing Method	Thermal Line	
Resolution	8 dots/mm(203dpi)	
Printing Speed	150mm/s	
Effective Printing Width	72mm(max)	
Paper Width	Max:80±0.5mm/ Min: 40±0.5mm	
Printing Head Temp Detection	Yes	
Paper-out Sensor	Yes	
Barcode	1D	UPC-A, UPC-E, EAN-13, EAN-8, CODE39, ITF25, CODEBAR, CODE93, CODE128
	2D	PDF417, QR CODE, DATA MATRIX
Commands	ESC/POS, CPCL, TSPL	
Driver	Windows/Linux/Android	
Print Font	Codepage,: ANK: 9 x17 / 12 x24; Chinese: 24 x 24	
Interface	USB / USB+Bluetooth(2.0/4.0)	
Power Supply	DC24V±5% , 2A	
Paper Type	Folded Paper/Thermal Label Paper/Normal Thermal Paper	
Paper Thickness	0.06mm-0.08mm(normal thermal paper), 0.12mm-0.14mm(label thermal paper)	
Outline Dimension	140×91×93mm(L×W×H)	
Weight	680g (NO Paper)	
Operating Temp/Humidity	0~50°C /10~80%	
Storage Temp/Humidity	-20~60°C /10~90%	
TPH	50KM	

◆ SP-TL51



Features:

- 127mm/s ultra-high printing speed
- Label printing width up to 108mm
- Memory printing, black mark detection supported



Garment



Storage



Retail

Specification



Printing Method	Thermal Line	
Resolution	8 dots/mm(203dpi)	
Inner Diameter	φ13mm	
Printing Speed	127mm/s	
Effective Printing Width	108mm	
Paper Width	Max:111.5mm ±0.5mm; Mix:40mm ±0.5mm	
Paper Type	Normal Thermal Paper, Label Paper, Folded Paper, Black Marked Paper	
Print Font	GB18030: 24x24; ASCII: 12x24	
Paper Roll	Max 112xφ127mm ; Min 112×φ13mm	
Barcode	1D	UPC-A, UPC-E, EAN-13, EAN-8, CODE39, ITF25, CODABAR CODE93, CODE128,
	2D	PDF417, QR Code, DATA Matrix
Paper Thickness	0.06-0.20mm(Normal Thermal Paper); 0.12-0.20mm(Labal Paper)	
Interface	Serial+USB+Ethernet/USB+Bluetooth(2.0/4.0)	
Power Supply	DC24V±10% , 2A	
Outer Diameter	127mm (MAX)	
Label Paper Gap Height	2mm (MIN)	
Operating Temp/Humidity	5~50°C /10%~80%	
Storage Temp/Humidity	-20~60°C /10%~90%	
Dimension	SP-TL51: 239x180x161mm(LxWxH)	
THP	100KM	

◆ SP-TL54



Features:

- 40-112mm printing range
- 150mm/s ultra-high printing speed
- Competitive price



Garment



Receipt



Logistics

Specification



Printing Method	Thermal Line	
Resolution	8 dots/mm(203dpi)	
Printing Speed	150mm/s	
Effective Printing Width	108mm (MAX)	
Paper Width	Max:111.5±0.5mm/ Min:40±0.5mm	
Paper Type	Normal Thermal Paper/ Thermal Label Paper/Fold Paper	
Print Font	Codepage,: ANK: 9 x17 / 12 x24; Chinese: 24 x 24	
Paper Roll	Max 112×Ø80mm, Min 112×Ø25mm	
Barcode	1D	UPC-A, UPC-E, EAN-13, EAN-8, CODE39, ITF25, CODABAR CODE93, CODE128,
	2D	PDF417, QR Code, DATA Matrix
Paper Thickness	0.06mm-0.08mm(Normal Thermal Paper); 0.06mm-0.14mm(Thermal Label Paper)	
Interface	USB	
Power Supply	DC24V±10% , 2A	
Label Paper Gap Height	2mm (MIN)	
Operating Temp/Humidity	5~50°C /10~80%	
Storage Temp/Humidity	-20~60°C /10~90%	
Outline Dimension	168x165x135mm(L×W×H)	
Driver	Windows/Linux/Android	
THP	50KM	

◆ SP-Y33



Features:

- 7inch touch screen and camera
- Compatible with 80mm/58mm paper
- USB/ LAN/ WIFI/ 4G/ Serial/ BT Logistics



Garment



Receipt



Data collection

Specification



Printing Method	Thermal Line	
Resolution	8 dots/mm(203dpi), 576 dots/line	
Effective Printing Width	72mm (MAX)	
Paper Width	79.5mm±0.5mm	
Printing Speed	150mm/s	
Codepage	Support	
Character Set	GB18030: ANK ; Code Paper Bigs	
Barcode	1D	UPC-A, UPC-E, EAN-13, EAN-8, CODE39, ITF25, CODEBAR, CODE93, CODE128
	2D	PDF417, QR CODE, DATA MATRIX
Power Supply	DC 24V±10% , 2.5A, DC005-2.5Power Socket	
Command	Compatible With ESC/POS / CPCL (Optional)	
Paper Type	Thermal Paper	
Interface	USB-TypeA/Serial/USB-TypeB/Ethernet/Cash drawer/Audio Frequency	
Paper Thickness	0.06-0.08mm	
Paper Supply Method	Manual	
Paper Cutting Method	Full Cut / Partial Cut	
Working Environment Temp/Humidity	0~50°C (Working Environment Temp)/10~80% (Relative Humidity)	
Storage Temp/ Humidity	-20~60°C (Working Environment Temp)//10~90% (Relative Humidity)	
TPH	150km	
Cutter Life	1,500,000 cuts	
Emulation	ESC/POS	
Appearance Size	220mm×141mm×142mm(L×W×H)	
Weight	1180g (NO Paper)	

◆ SP-Y37



Features:

- 8 inch LCD screen, resolution 1280×800
- Support Android 10, Google Market
- Support voice broadcast, provide API for voice broadcast
- Support scanning window, the scanning window is on the side of the printer



Garment



Receipt



Data collection

Specification

Host configuration	Motherboard	Atom Low-power Industrial Control Motherboard	
	Processor	Msm8953 (64 bit)	
	Memory	2GB	
	Hard disk	16GB	
	Power supply	24V, 2.5A	
Display	Display	8 inch/Resolution 1280×800	
	Touch screen	Capacitive Touch Screen	
	Customer display	HDMI Output (Optional)	
Peripherals	Scanner	CMOS	
	4G module	LTE-FDD,LTE-TDD,TD-SCDMA	
	WIFI	IEEE 802.11 b/g/n	
	Bluetooth	Bluetooth 4.0	
Interface	Type (A, B) USB, Serial Port, LAN, Cash Drawer Interface, HDMI I interface (Optional), NFC (Reserved)		
Printer	Printing Method	Thermal Printing	
	Printing Speed	MAX: 200mm/s (Thermal paper); MAX: 100mm/s (Label Paper)	
	Effective Printing Width	72mm (MAX)	
	Printing Paper Width	(40-82.5)mm±0.5mm	
Pre-downloaded Graphics	Supported		
Support Functions	Black Mark Positioning, Cover Opening And Closing Alarm, Paper Out Alarm, Heater Overheat Protection, Buzzer, Speaker		
Paper Type	Thermal Paper, Label Paper, Black Mark Paper		
Paper Thickness	0.06mm~0.08mm (Thermal Paper); 0.12~0.15mm (Label Paper)		
Maximum Outer Diameter Of Paper Roll	φ80mm		
Paper Cutting Method	Full Cut, Half Cut		
Commands Set	ESC/POS, TSPL, CPCL		
Working Environment Temperature/Humidity	0~50°C (Working Environment) /10~80% (Relative Humidity)		
Storage Environment Temperature/Humidity	-20~60°C (Working Environment) /10~90% (Relative Humidity)		
Cutter Life	1,500,000 times (Cut Backing Paper)		
TPH	150km (Thermal Paper); 50km (Label Paper)		

Portable Receipt Printer

With smart and portable size, the portable receipt printer could be taken conveniently by users on mobile law business, vehicles insurance losses receipt printing, logistics.



◆ SP-T7



Features:

- Light weight for taking conveniently
- Support BT4.0 , Android, ios
- Large paper capacity and long battery life
- LCD Display



Mobile Law



Storage



Testing

Specification



Printing Method	Dot Matrix
Resolution	40 characters per line
Paper Type	Normal Thermal Paper
Printing Speed	5.5mm/s
Character Set	ASCII,GB18030(Chinese), BIG5, Codepage
Print Font	Font A:6×12(12×12), Font B:8×16(16×16), Font C:7×9
Self-defined Character	Yes
Interface	USB+Bluetooth(2.0/4.0)
SDK	Symbian/Windows/Blackberry/Linux/Android/iOS
Battery	DC7.4V/1500mAh Rechargeable Li-ion
Charger	DC9V/2A
TPH	1.5 Million Lines
Effective Printing Width	48mm
Paper Width	57±0.5mm
Paper Thickness	0.06-0.08mm
Paper Roll Diameter	40mm (MAX)
Paper Supply Method	Semi-auto Loading
Paper Cutting Method	Manual
Operating Temp/Humidity	0~50°C /10%~80%
Storage Temp/Humidity	-20~60°C /10%~90%
Dimension	122mm×98mm×47mm(L×W×H)
Weight	347g(NO Paper)

◆ SP-T9



Features:

- Support IOS and Android
- Vehicle charger support
- Super battery capability
- Standby 100 hours at least



Mobile Law



Storage



Logistics

Specification



Printing Method	Thermal Line	
Resolution	8 dots/mm(203dpi), 576 dots/line	
Paper Type	Thermal paper	
Printing Speed	80mm/s	
Character Set	ASCII, GB18030(Chinese), BIG5, Codepage	
Print Font	Font A: 12x24, Font B: 9x17	
Self-defined Character	Yes	
Barcode	1D	UPC-A, UPC-E, EAN-13, EAN-8, CODE39, ITF25, CODEBAR, CODE93, CODE128
	2D	PDF417, QR CODE, DATA MATRIX
Interface	USB/RS232/USB+WIFI/USB+Bluetooth	
SDK	Symbian/Windows/Blackberry/Linux/Android/iOS	
Battery	DC7.4V/1500mAh Rechargeable Li-ion	
Charger	DC9V/2A	
TPH	50KM	
Effective Printing Width	72mm	
Paper Width	79.5mm±0.5mm	
Paper Thickness	0.06-0.08mm	
Paper Roll Diameter	40mm(MAX)	
Paper Supply Method	Drop-in Easy Loading	
Paper Cutting Method	Manual	
Operating Temp/Humidity	0~50°C /10%~80%	
Storage Temp/Humidity	-20~60°C /10%~90%	
Dimension	105mm×101mm×46mm(L×W×H)	
Weight	254g(NO Paper)	

◆ SP-T12



Features:

- Light weight for taking conveniently
- Vehicle charger support
- Continuing printing when battery is being charged



Garment



Storage



Testing

Specification



Printing Method	Thermal Line	
Resolution	8 dots/mm (203dpi), 384 dots/line	
Paper Type	Normal Thermal Paper	
Printing Speed	62mm/s	
Character Set	ASCII, GB18030(Chinese), BIG5, GB12345, Codepage	
Print Font	Font A: 8×16(16×16), Font B: 9×24, Font C: 12×24(24×24)	
Self-defined Character	Yes	
Barcode	1D	UPC-A, UPC-E, EAN-13, EAN-8, CODE39, ITF25, CODEBAR, CODE93, CODE128
	2D	PDF417, QR CODE, DATA MATRIX
Interface	Serial/USB+Bluetooth(2.0/4.0)	
SDK	Symbian/Windows/Blackberry/Linux/Android/iOS	
Battery	7.4V/1500mAh Rechargeable Li-ion Battery	
Charger	5V/1A	
TPH	50KM	
Effective Printing Width	48mm	
Paper Width	57.5±0.5mm	
Paper Thickness	0.06-0.08mm	
Paper Roll Diameter	40mm (MAX)	
Paper Supply Method	Drop-in Easy Loading	
Paper Cutting Method	Manual	
Operating Temp/Humidity	0~50°C /10%~80%	
Storage Temp/Humidity	-20~60°C /10%~90%	
Dimension	106.5mm×78mm×47mm(L×W×H)	
Weight	190g(NO Paper)	

◆ SP-T17



Features:

- Light weight for taking conveniently
- Support Label Paper/Thermal paper
- Super battery capability
- 100mm/s super printing speed



Mobile Low



Storage



Label System

Specification



Printing Method	Thermal Line
Resolution	8 dots/mm(203 dpi), 576 dots/line
Effective Printing Width	72mm
Paper Width	79.5±0.5mm/57.5±0.5mm, 40±0.5mm, 30±0.5mm for option
Printing Speed	80mm/s(Thermal paper); 70mm/s(Label paper)
Paper Thickness	0.06-0.08mm (Thermal paper) , 0.06-0.15mm (Label paper)
Paper Type	Thermal Paper/Label Paper
Paper Roll Diameter	φ50mm(MAX)
Print FontCodepage	Support
Print Font	Font A: 24x24; Font B:9×17; Font C: 12x24
Function	Paper out alarm, Black mark detection, Label detection, Overheat protection, Open and close cover alarm
Interface	USB+Bluetooth(2.0/4.0)
Battery	DC7.4V/1400mAh Rechargeable Li-ion
Power Adaptor	DC 5V/1A
Paper Loading Method	Easy Loading
Paper Cutting Method	Manual
Weight	320g(No Paper)
Standby Time	Three Days
Print Head Life	50KM
Operating Temp/Humidity	0~50°C /10~80%
Storage Temp/ Humidity	-20~60°C /10~90%

◆ SP-L21



Features:

- Bi-colour module
- Support Label Paper/Thermal paper
- Super battery capability
- 100mm/s super printing speed



Garment



Storage



Logistics

Specification



Printing Method	Thermal Line	
Resolution	8 dots/mm(203 dpi), 384dots/line	
TPH	50KM	
Printing Speed	100mm/s(Normal Thermal Paper)/80mm/s(Thermal Label Paper)	
Character Set	ASCII, GB18030(Chinese), BIG5, Codepage	
Self-defined Character	Yes	
Barcode	1D	UPC-A, UPC-E, EAN-13, EAN-8, CODE39, ITF25, CODEBAR, CODE93, CODE128
	2D	PDF417, QR CODE, DATA MATRIX
Interface	USB+Bluetooth(2.0/4.0)	
Driver	Windows/Linux	
SDK	Symbian/Windows/Blackberry/Linux/Android/iOS	
Battery	DC7.4V/1600mA Rechargeable Li-ion Battery	
Charger	8.4V/1.5A	
Effective Printing Width	48mm	
Paper Width	57.5±0.5mm	
Paper Thickness	0.06-0.15mm	
Paper Roll Diameter	40mm (MAX)	
Paper Supply Method	Drop-in Easy Loading	
Paper Cutting Method	Manual	
Operating Temp/Humidity	0~50°C /10%~80%	
Storage Temp/Humidity	-20~60°C /10%~90%	
Dimension	120mm×82mm×50.5mm(L×W×H)	
Weight	300g(With Battery)	

◆ SP-L31



Features:

- LCD display (power,status)
- Multit-interfaced and different paper size support
- Super battery capability



Mobile Law



Storage



Testing

Specification



Printing Method	Thermal Line	
Resolution	8 dot/mm(203 dpi)	
Paper Type	Normal Thermal Paper/Thermal Label Paper	
Printing Speed	80mm/s(Receipt Paper), 67mm/s(Label Paper)	
Character Set	ASCII, GB18030(Chinese), Big5, Codepage,	
Print Font	Font A:12x24, Font B:8×16, Font C:9x17	
Self-defined Character	Yes	
Barcode	1D	UPC-A, UPC-E, EAN-13, EAN-8, CODE39, ITF25, CODEBAR, CODE93, CODE128
	2D	PDF417, QR CODE, DATA MATRIX
Interface	USB+Bluetooth(2.0/4.0)	
SDK	Symbian/Windows/Blackberry/Linux/Android/iOS	
Battery	DC7.4V/1400mAh Rechargeable Li-ion	
Charger	DC8.4V/800mA	
TPH	50KM	
Effective Printing Width	72mm/48mm/37.5mm	
Paper Width	79.5mm±0.5mm, 57.5±0.5mm, 44±0.5mm	
Paper Thickness	0.06mm~0.08mm(Normal Thermal Paper) 0.06~0.15mm(Thermal Label Paper)	
Paper Roll Diameter	40mm (MAX)	
Paper Supply Method	Drop-in Easy Loading	
Paper Cutting Method	Manual	
Operating Temp/Humidity	0~50°C /10%~80%	
Storage Temp/Humidity	-20~60°C /10%~90%	
Dimension	105mm×109mm×51mm(L×W×H)	

◆ SP-L36



Features:

- Large battery capacity to 2100mAh, long standby time
- 1.5m drop testing, IP54 waterproof level
- Competitive price



Mobile Law



Storage



Testing

Specification



Printing Method	Thermal Line	
Resolution	8 dot/mm(203 dpi)	
Paper Type	Normal Thermal Paper/Thermal Label Paper	
Printing Speed	80mm/s(Normal Thermal Paper)/60mm/s(Thermal Label Paper)	
Character Set	ASCII, GB18030(Chinese), Big5, Codepage	
Print Font	Font A:12x24, Font B:8×16, Font C:9x17	
Self-defined Character	Yes	
Barcode	1D	UPC-A, UPC-E, EAN-13, EAN-8, CODE39, ITF25, CODEBAR, CODE93, CODE128
	2D	PDF417, QR CODE, DATA MATRIX
Interface	USB+Bluetooth(2.0/4.0)	
SDK	Symbian/Windows/Blackberry/Android/iOS/Linux	
Battery	DC 7.4V/2100mAh,rechargeable polymer lithium battery	
Charger	5V/1A,type-c	
TPH	50KM	
Effective Printing Width	72mm/48mm	
Paper Width	79.5±0.5mm; 57.5±0.5mm	
Paper Thickness	0.06mm~0.08mm(Normal Thermal Paper), 0.06~0.15mm(Thermal Label Paper)	
Paper Roll Diameter	50mm (MAX)	
Paper Supply Method	Drop-in Easy Loading	
Paper Cutting Method	Manual	
Operating Temp/Humidity	0~50°C /10%~80%	
Storage Temp/Humidity	-20~60°C /10%~90%	
Dimension	123mm×112mm×67mm(L×W×H)	
Weight	436g(NO paper)	

◆ SP-L39



Features:

- Easy operation
- Compact structure with fashion design
- Reliable quality supports long life usage
- Adjustable paper holder width of 40~80mm



Catering



Storage



Garment

Specification



Printing Method	Thermal Line
Paper Width	40mm~80mm
Resolution	8 dots/mm(203 dpi), 576 dots/line
Paper roll Diameter	φ50mm(Max)
Printing Speed	80mm/s(Thermal Paper),80mm/s(Label Paper)
Paper Thickness	0.06-0.15mm
Command Set	ESC/POS,CPCL,TSPL
Character Set	ASCII,GB1803(Chinese)
Print Font	12×24,9×17
Dimension	113mm×105mm×60mm(L×W×H)
Weight	376g(No paper)
Print Head Life	50KM
Interface	USB+Bluetooth
Paper Loading Method	Easy Loading
Paper Cutting Method	Manual
Battery	DC7.4V/2000mAh Rechargeable Li-ion Battery
Charger	DC 5V/2A
Support function	Paper out Alarm,Label paper mark,Over heating protection,paper cover being detected
Operating Temp/Humidity	-10~50°C /10~80%
Storage Temp/Humidity	-20~60°C /10~90%

◆ SP-L51



Features:

- 1",2",3"4" Paper size available
- 1.5m drop test
- Large paper diameter
- Long printing length, standby time (≥ 200m,100h)



Catering



Storage



Label System

Specification



Printing Method	Thermal Line	
Resolution	8 dots/mm (203dpi)	
Effective Printing Width	104mm/100mm/72mm/48mm/37.5mm	
Paper Width&Dots per line	111.5±0.5mm: 832dots per line/104±0.5mm: 800dots per line/79.5±0.5mm: 576dots per line/57.5±0.5mm:384dots per line/44±0.5mm:300dots per line	
Printing Speed	80mm/s(Normal Thermal Paper)/50mm/s(Thermal Label Paper)	
Graph Printing	Diagram, downloaded bitmap supported	
Character Set	ASCII, GB18030(Chinese), Big5, Codepage	
Print Font	Font A: 8x16; Font B: 9x17; Font C: 12×24	
TPH	50KM	
Barcode	1D	UPC-A, UPC-E, EAN-13, EAN-8, CODE39, ITF25, CODEBAR, CODE93, CODE128
	2D	PDF417, QR CODE, DATA MATRIX
Interface	USB+Bluetooth(2.0/4.0)	
Driver	Windows/Linux	
SDK	Symbian/Windows/Linux/Blackberry/Android/iOS	
Paper Type	Normal Thermal Paper/Thermal Label Paper	
Paper Roll Diameter	Max 40mm (Extensible)	
Paper Thickness	0.06mm~0.08mm(Normal Thermal Paper), 0.06~0.15mm(Thermal Label Paper)	
Battery&Charger	DC7.4V/2300mAh Rechargeable Li-ion Battery; 8.4V/800mA Charger	
Paper Supply Method	Drop-in Easy Paper Loading	
Dimension	115mm×147mm×53.5mm(L×W×H)	
Weight	500g(NO paper)	
Drop Resistance	1.5m	
Operating Temp/Humidity	0~50°C /10%~80%	
Storage Temp/Humidity	-20~60°C /10%~90%	

Panel Receipt Printer

With reliable data transmission and smart installing port design, SRPT Panel receipt printers are widely accepted by manufactures of Weighing Scale, Oiling Machine, Analysis meter, Medical Equipment and Fire-alarm Equipment etc.



◆ SP-RMDIIID/RMDIVD



Features:

- Small size and light weight
- Clear printing and beautiful appearance
- Wide voltage, adjustable printing speed and density



Instruments



Medical Care



Fire control

Specification



Printing Method	Thermal Line
Paper Type	Thermal Paper
Printing Speed	30mm/s (5-8.5V); 62mm/s (9-24V)
Character Set	ASCII, GB18030(Chinese), BIG5, Codepage
Print Font	ASCII: 5x7, 8x16, 12x24
Interface	RS-232/Paralle
Barcode	UPC-A, UPC-E, EAN-13, EAN-8, CODE39, ICODEBAR, CODE93, CODE128
Power Supply	DC5V-8.5V, 3A; DC9V-24V, 3A
Effective Printing Width	48mm
Paper Width	57.5±0.5mm
TPH	50KM
Paper Roll Diameter	40mm (Max.)
Operating Temp/Humidity	0~50°C /10%~80%
Storage Temp/Humidity	-20~60°C /10%~90%
Dimension	110mm×64mm×72.5mm(L×W×D)
Installation Port Size	103.5mm×57.5mm(L×W) Depth:61mm
Weight	SP-RMDIIID: 181g SP-RMDIVD: 178g

◆ SP-DVII



Features:

- Smart desktop size, big roll paper support
- High speed printing, high resolution
- Easily embedded to any kinds of instruments and meters



SST



Medical Care



Fire control

Specification



Printing Method	Dot Matrix
Character Per Line	16/24/40 Characters/Line
Effective Printing Width	33mm/48mm
Printing Speed	1.2 lines/s (16 Character/line), 0.7 lines/s (24 Character/line), 0.4 lines/s (40 Character/line)
Character Set	ASCII,GB18030(Chinese)
Print Font	Font A: 12x12; Font B: 16x16; Font C: 6x7
Self-defined Character	Yes
Interface	RS-232/Parallel
Paper Width	44±0.5mm,57±0.5mm
MCBF	1.5Million lines
Power Supply	DC5V±5%,1.5A
Installation Port Size	103.5mm×57.5mm(L×W) Depth:64mm
Dimension	110mm×65.5mm×68mm(L×W×D)
Weight	244g

◆ SP-RMD8A / SP-RMD8B / SP-RMD8C



Instruments



Fire control



Manufacturing

- Wide voltage range
- Smart panel size
- Convenient for handling
- Easily embedded to any kinds of instruments and meters

Specification



Printing Method	Thermal Line
Effective Printing Width	48mm
Printing Speed	30mm/s
Character Set	ASCII, GB18030(Chinese), BIG5, Codepage
Print Font	12x24, 8x16, 5x7
Interface	D8A:RS-232/TTL D8B&D8C: RS232/Parallel/TTL/RS485/USB
Barcode	UPC-A, UPC-E, EAN-13, EAN-8, CODE39, ITF25, CODEBAR, CODE93, CODE128
Power Supply	DC 5V-8.5V, 3A
Paper Width	57.5±0.5mm
TPH	50KM
Paper Type	Thermal Paper
Paper Roll Diameter	(Max.)(D8A: 20mm; D8B: 30mm ; D8C: 50mm)
Operating Temp/Humidity	0~50°C /10%~80%
Storage Temp/Humidity	-20~60°C /10%~90%
Dimension	D8A: 79.5mmx42mmx39.5mm(L×W×D) D8B: 83mmx58.5mmx45.5mm(L×W×D) D8C: 85mm×85mm×57.5mm (L×W×D)
Installation Port Size	D8A: 75.5mmx38.5mm(W×H) Depth:37mm D8B: 78.5mmx54mm(W×H) Depth:43mm D8C: 80.5mm×80.5mm(W×H) Depth:55.5mm
Resolution	8 dot/mm(203 dpi), 384 dots/line

◆ SP-RMD9



Features:

- Convenient for handling
- Wide voltage range
- Easily embedded to any kinds of instruments and meters



SST



Medical Care



Fire control

Specification



Printing Method	Thermal Line	
Paper Type	Thermal Paper	
Printing Speed	30mm/s	
Character Set	ASCII, GB18030(Chinese), BIG5, Codepage	
Print Font	5x7, 12x24, 8x16	
Interface	RS-232/Parallel/RS-485	
Barcode	1D	UPC-A, UPC-E, EAN-13, EAN-8, CODE39, ITF25, CODEBAR, CODE93, CODE128
	2D	PDF417, QR CODE, DATA MATRIX
Power Supply	DC5V-8.5V, 3A; DC9V-24V, 3A	
Effective Printing Width	48mm	
Paper Width	57.5±0.5mm	
TPH	50KM	
Paper Roll Diameter	40mm (Max.)	
Operating Temp/Humidity	0~50°C /10%~80%	
Storage Temp/Humidity	-20~60°C /10%~90%	
Dimension	110mmx64mmx58mm(L×W×D)	
Installation Port Size	103mm×57mm(L×W) Depth:55mm	
Weight	200g	

◆ SP-D10



Features:

- Smart desktop size
- Convenient for handling
- High speed printing, high resolution



SST



Medical Care



Fire control

Specification



Printing Method	Dot Matrix
Character Per Line	16/24/40 Characters/Line
Effective Printing Width	33mm/48mm
Printing Speed	1.2 lines/s (16 Character/line), 0.7 lines/s (24 Character/line), 0.4 lines/s (40 Character/line)
Character Set	ASCII, GB18030(Chinese)
Print Font	Font A: 5×7
Self-defined Character	Yes
Interface	RS-232/Parallel /RS-485/TTL
Paper Width	44±0.5mm, 57.5±0.5mm
TPH	1.5Million Line
Power Supply	DC 5V±5%, 1.5A
Installation Port Size	103mm×57mm(L×W) Depth:51mm
Dimension	107mm×61.5mm×55.5mm(L×W×D)
Weight	200g

◆ SP-RMD11



Features:

- Smart panel size
- Convenient for handling
- Easily embedded to any kinds of instruments and meters



SST



Medical Care



Manufacturing

Specification



Printing Method	Thermal Line
Paper Type	Thermal Paper
Printing Speed	30mm/s
Character Set	ASCII, GB18030(Chinese), BIG5, Codepage
Print Font	ASCII: 12x24, 8x16, 5×7
Interface	RS-232/Paralle/USB/TTL
Barcode	UPC-A, UPC-E, EAN-13, EAN-8, CODE39, ICODEBAR, CODE93, CODE128
Power Supply	DC 5V-8.5V, 3A/ DC 9V-24V, 3A
Effective Printing Width	48mm
Paper Width	57.5±0.5mm
TPH	50KM
Paper Roll Diameter	30mm (Max.)
Operating Temp/Humidity	0~50°C /10%~80%
Storage Temp/Humidity	-20~60°C /10%~90%
Dimension	80mm×61mm×63mm(L×W×D)
Installation Port Size	76.5mm×57.5mm(L×W) Depth:34mm
Weight	89g

◆ SP-RMD12



Features:

- Wide voltage range
- Support multi interfaces
- Easily embedded



SST



Medical Care



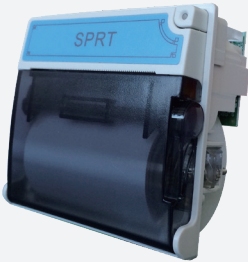
Fire control

Specification



Printing Method	Thermal Line
Paper Type	Thermal Paper
Printing Speed	30mm/s(25% Print Density)
Character Set	ASCII, GB18030(Chinese), BIG5, Codepage
Print Font	ASCII: 5x7, 8x16, 12x24
Interface	RS-232/Paralle
Barcode	UPC-A, UPC-E, EAN-13, EAN-8, CODE39, ICODEBAR, CODE93, CODE128
Power Supply	DC 5V-8.5V, 3A /DC9-24V, 3A
Effective Printing Width	48mm
Paper Width	57.5±0.5mm
TPH	50KM
Paper Roll Diameter	30mm (Max.)
Operating Temp/Humidity	0~50°C /10%~80%
Storage Temp/Humidity	-20~60°C /10%~90%
Dimension	110mm×64mm×51mm(L×W×D)
Installation Port Size	103mm×57mm(L×W) Depth:43.5mm
Weight	142g

◆ SP-RMD15



Features:

- Smart panel size
- Fixed at front
- Transparent paper cover



Instruments



Medical Care



Manufacturing

Specification



Printing Method	Thermal Line
Paper Type	Thermal Paper
Printing Speed	80mm/s
Character Set	ASCII,GB18030(Chinese),BIG5,Codepage
Print Font	ASCII: 8x16 ,12x24
Interface	RS232
Barcode	UPC-A, UPC-E, EAN-13, EAN-8, CODE39, ICODEBAR, CODE93, CODE128
Power Supply	DC5-8.5V,3A/DC9V-24V,3A
Effective Printing Width	48mm
Paper Width	57.5±0.5mm
TPH	50KM
Paper Roll Diameter	30mm (Max.)
Operating Temp/Humidity	0~50°C /10%~80%
Storage Temp/Humidity	-20~60°C /10%~90%
Dimension	80mm×75mm×45mm(L×W×D)
Installation Port Size	76.5mm×72.5mm(L×W) Depth:32mm
Weight	104g

◆ SP-RMD17



Features:

- Anti-static protection design
- Fixed at front
- Large paper roll warehouse



SST



Medical Care



Manufacturing

Specification



Printing Method	Thermal Line
Paper Roll Diameter	Max.60mm
Printing Speed	70mm/s
Character Set	ASCII, GB18030(Chinese), Chinese: 24x24
Print Font	ASCII: 12x14
Interface	RS-232/Parallel/USB
Paper Type	Thermal Paper
Effective Printing Width	48mm
Paper Width	57.5±0.5mm
Paper Thickness	0.06-0.08mm
Paper Supply Method	Drop-in easy paper loading
TPH	60KM
Emulation	ESC/POS
Sensor	Paper Near End Sensor/Paper End Sensor
Power Supply (Adapter)	DC 12V±10%, 1A
Dimension	132mmx115mm×79.5mm(L×W×D)
Installation Port Size	128.5mm×111.5mm(L×W) Depth:77mm
Cutting Method	Manual

◆ SP-RMD18A



Features:

- Smart panel size
- Convenient for handling
- Easily embedded to any kinds of instruments and meters



SST



Fire control



Instrumentation

Specification



Printing Method	Thermal Line
Paper Type	Thermal Paper
Printing Speed	30mm/s
Character Set	ASCII, GB18030(Chinese), BIG5, Codepage
Print Font	ASCII: 12x24, 8x16 , 5x7
Barcode	UPC-A, UPC-E, EAN-13, EAN-8, CODE39, ICODEBAR, CODE93, CODE128
Interface	RS -232 /USB/Parallel/TTL
Power Supply	DC 5V-8.5V, 3A/ DC 9V-24V, 3A
TPH	50KM
Effective Printing Width	48mm
Paper Width	57.5±0.5mm
Paper Roll Diameter	Max.30mm
Operating Temp/Humidity	0~50°C /10%~80%
Storage Temp/Humidity	-20~60°C /10%~90%
Dimension	80mm×61mm×39mm (L×W×D)
Installation Port Size	(76~78)mm×(56~58.5)mm(W×H) Depth:34mm
Weight	89g

◆ SP-RME3



Features:

- 100mm/s high speed printing
- Avoid to paper jam design
- 60mm big paper roll support
- Front side installation method



SST



Medical Care



Fire control

Specification



Printing Method	Thermal Line	
Resolution	8 dots/mm(203dpi), 384 dots/line	
Paper Type	Thermal Paper	
Printing Speed	100mm/s	
Character Set	ASCII, GB18030(Chinese), BIG5, Codepage	
Print Font	Font A: 12x14, Font B: 9x17	
Self-defined Character	Yes	
Barcode	1D	UPC-A, UPC-E, EAN-13, EAN-8, CODE39, ITF25, CODEBAR, CODE93, CODE128
	2D	PDF417, QR CODE, DATAMAT RIX
Interface	RS -232 /USB/Parallel/TTL	
Power Supply	DC (9-24)V±10%, 2A	
TPH	50KM	
Effective Printing Width	48mm	
Paper Width	57.5±0.5mm	
Paper Thickness	0.06-0.08mm	
Paper Roll Diameter	Max.60mm	
Auto Cutter Life	1,000,000 Cuts	
Auto Cutter Type	Partial Cut/Full Cut	
Operating Temp/Humidity	0~50°C /10%~80%	
Storage Temp/Humidity	-20~60°C /10%~90%	
Dimension	110mm×101mm×70.5mm(L×W×D)	
Installation Port Size	103.5mm×95.5mm(L×W) Depth:67.5mm	
Weight	334g	

◆ SP-RME4



Features:

- Smart panel size
- Convenient for handling
- Easily embedded to any kinds of instruments and meters



Fire control



Medical Care



Manufacturing

Specification



Printing Method	Thermal Line	
Resolution	8 dots/mm(203dpi)	
Effective Printing Width	72mm/48mm	
Paper Width	79.5±0.5mm/57.5±0.5mm	
Printing Speed	170mm/s	
Self-defined Character	Yes	
Character Set	ASCII, GB18030(Chinese), BIG5, Codepage	
Print Font	Font : 12x24, 24x24	
Barcode	1D	UPC-A, UPC-E, EAN-13, EAN-8, CODE39, ITF25, CODEBAR, CODE93, CODE128
	2D	PDF417, QR CODE, DATAMAT RIX
Interface	RS-232+USB	
Power Supply	DC 24V±10% , 2A	
Paper Type	Thermal Paper	
Paper Thickness	0.06-0.08mm	
paper Roll Diameter	80mm(Max.)	
Auto Cutter	Partial Cut/Full Cat	
TPH	100KM	
Driver	Windows/JPOS/OPOS/Linux/Android	
Operating Temp/Humidity	0~50°C /10%~90%	
Storage Temp/Humidity	-20~60°C /10%~90%	
Dimension	132mm×125.5mm×87mm(L×W×D)	
Weight	400g (Exclude Paper Roll)	

◆ SP-RME5



Features:

- Imported Cutter
- 80mm thermal printing
- Fixed at front design
- Paper case with lock



Instruments



Medical Care



Manufacturing

Specification



Printing Method	Thermal Line	
Resolution	8 dots/mm(203 dpi), 576 dots/line	
Effective Printing Width	72mm	
Paper Width	79.5±0.5mm	
Self-defined Character	Yes	
Graph Printing	Diagram, download bitmap supported	
Print Font	Chinese: 24x24, ASCII: 12x24	
Barcode	1D	UPC-A, UPC-E, EAN-13, EAN-8, CODE39, ITF25, CODEBAR, CODE93, CODE128
	2D	PDF417, QR CODE, DATAMAT RIX
Interface	Serial/Parallel/USB	
Other Functions	Paper out alarm; Open and close cover detection; Overheat protection; Buzzer	
Cash Drawer Port	6Pin RJ-11 Socket	
Power Supply	DC 24V±10%, 2A	
Paper Type	Normal Thermal Paper / Black Marked Paper	
Paper Thickness	0.06-0.08mm	
Paper Installation	Drop-in Easy Loading	
Paper Cutting Life	1,000,000 cuts	
Command	ESC/POS	
Operating Temp/Humidity	0~50°C /10%~90%	
Storage Temp/Humidity	-20~60°C /10%~90%	
Outer Line Dimension	132mm×115mm×82.5mm(L×W×D)	
Installation Port Size	(128.5±0.5)mm×(111.5±0.5mm)/Depth: 77mm	
Weight	970g (Exclude Paper Roll)	

◆ SP-RME5A



Features:

- Voltage 12V/24V power supply
- Printing speed: (MAX) 170mm/s
- Front cover opening method, easy to install



SST



Medical Care



Queue Machine

Specification



Printing Method	Thermal Line	
Resolution	8 dots/mm(203 dpi), 576 dots/line	
Effective Printing Width	72mm	
Paper Width	79.5±0.5mm	
Self-defined Character	Yes	
Graph Printing	Diagram, download bitmap supported	
Print Font	Chinese: GB18030(Chinese) 24X24	
Barcode	1D	UPC-A, UPC-E, EAN-13, EAN-8, CODE39, ITF25, CODEBAR, CODE93, CODE128
	2D	PDF417、QR Code、DATA Matrix
Interface	USB port+Parallel port(SP- RME5APUF)/Serial port((SP-RME5ASUF)	
Supported Functions	Buzzer, Paper shortage alarm, Cash drawer	
Power Supply	SP- RME5APUF: DC12V 10%, 4A, 5557-2*2P (4.2mm spacing) Power Socket SP- RM E5ASUF: DC24V 10%, 2A, 2114S-02 Power Socket	
Paper Loading Method	Easy Loading	
Paper Type	Normal thermal paper 80 xφ80mm (MAX)	
Paper Thickness	0.06-0.08mm	
Paper cutting method	Automatically cutting(Full cut/Half cut available)	
Paper Cutting Life	1,000,000 cuts	
Operating Temp/Humidity	0~50°C /10%~90%	
Storage Temp/Humidity	-20~60°C /10%~90%	
Outer Line Dimension	125.5mm×132mm×86.7mm (WXHXD), No Lock (Standard model) 125.5mm×132mm×89.7mm(WXHDXD),with lock(optional)	
Installation Port Size	111.5mm×128.5mm(W×H)/Depth: 84.2mmmm	
Printing Speed	(MAX) 170mm/s	
TPH	100km	

◆ SP-RME6



Features:

- 100mm/s High-speed Printing
- Easy to operate, fully functional
- Compact size with a 58mm paper width and cutter
- Front opening, easy to reload paper roll



Instruments



Medical Care



Manufacturing

Specification



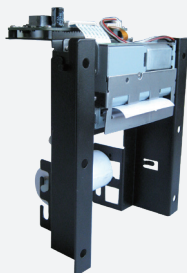
Printing Method	Thermal Line	
Resolution	8dots/mm (203dpi), 384dots/line	
Effective Printing Width	48mm	
Paper Width	57.5mm ± 0.5mm	
Self-defined Character	Yes	
Graph Printing	Diagram, download bitmap supported	
Print Font	GB18030(Chinese),BIG5(Traditional Chinese)	
Barcode	1D	UPC-A, UPC-E, EAN-13, EAN-8, CODE39, ITF25, CODEBAR, CODE93, CODE128
	2D	PDF417, QR CODE, DATAMAT RIX
Interface	USB+Serial port	
Other Functions	Paper out warning, overheating protection	
Printing speed	(MAX) 100mm/s	
Power Supply	DC 9V-24V 2A, 12V-24V 2A is highly recommended	
Paper Type	Normal thermal paper 58XΦ50mm (MAX)	
Paper Thickness	0.06-0.08mm	
Paper cutting method	Automatically cutting(full-cut and half-cut mode)	
Paper Cutting Life	1,000,000 cuts	
Paper Loading Method	Simple paper loading	
Operating Temp/Humidity	0~50°C /10%~90%	
Storage Temp/Humidity	-20~60°C /10%~90%	
Outer Line Dimension	100.3mm×99.9mm×60mm(W×H×D)	
Installation Port Size	96.7mm×95.7mm(W×H)/Depth: 52.7mm	
THP	50KM	

Embedded Receipt Printer

SPRT printing mechanism can be compatible with most of KIOSK machine and self-service machine, like ATM, self check-in & check out machine, queue machine, locker cabinet and express cabinet.



◆ SP-EU58III



Features:

- Paper auto feeding
- Low noise thermal printing
- Multi interfaces



SST



ATM



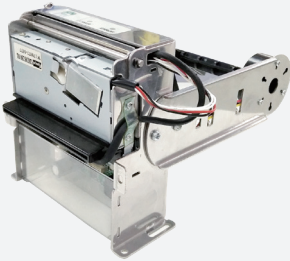
Queue Machine

Specification



Printing Method	Thermal Line	
Resolution	8 dots/mm(203dpi), 384 dots/line	
Paper Type	Thermal Paper	
Printing Speed	80mm/s	
Character Set	ASCII, GB18030(Chinese), BIG5, Codepage	
Print Font	ASCII: 9x17 , Font B: 12x24	
Barcode	1D	UPC-A, UPC-E, EAN-13, EAN-8, CODE39, ITF25, CODEBAR, CODE93, CODE128
	2D	PDF417, QR CODE, DATAMAT RIX
Interface	RS232/USB	
Paper Supply Method	Manual	
Power Supply	DC 9-24V±10% , 2A	
TPH	50KM	
Effective Printing Width	48mm	
Paper Width	57.5±0.5mm	
Paper Thickness	0.06-0.08mm	
Paper Roll Diameter	100mm (MAX)	
Auto Cutter Type	Guillotine	
Auto Cutter Life	1,000,000 Cuts	
Cutting Method	Partial Cut/Full Cat	
Operating Temp/Humidity	0~50°C /10%~80%	
Storage Temp/Humidity	-20~60°C /10%~90%	
Dimension	156mm x 124mm x80mm(LxW×H)	
Weight	544g	

◆ SP-EU586



Features:

- Smart size, attractive appearance
- Low noise thermal printing
- Paper auto feeding, super paper roll



SST



ATM



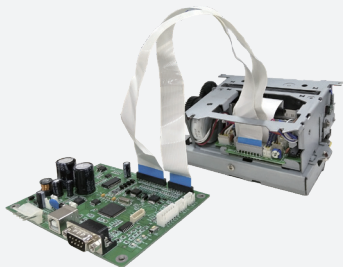
Locker cabinet

Specification



Printing Method	Thermal Line	
Resolution	8 dots/mm(203dpi), 384 dots/line	
Paper Type	Thermal Paper	
Printing Speed	60mm/s	
Character Set	ASCII, GB18030(Chinese), BIGS (24x24), Codepage	
Print Font	ASCII: 9x17, 12x24	
Barcode	1D	UPC-A, UPC-E, EAN-13, EAN-8, CODE39, ITF25, CODEBAR, CODE93, CODE128
	2D	PDF417, QR CODE, DATA MATRIX
Interface	RS-232 (PDK-5 PIN)/USB	
Paper Supply Method	Manual	
Power Supply	DC9-24V, 2A	
TPH	50KM	
Effective Printing Width	48mm	
Paper Width	57.5± 0.5mm	
Paper Thickness	0.06-0.08mm	
Paper Roll Diameter	φ100mm(OD)/φ13mm(ID)	
Auto Cutter Type	Guillotine	
Auto Cutter Life	1,000,000 Cuts	
Cutting Method	Full/Partial cut	
Operating Temp/Humidity	0~50°C /10%~80%	
Application	KIOSK Solution	
Weight	245g	
Dimension	162mm×103mm×103mm(L×W×H)	

◆ SP-EU80



Features:

- High speed of printing up to 220mm/s
- Firmware on line updating available
- 2D barcode printing support
- Avoid to lose data design



SST



ATM



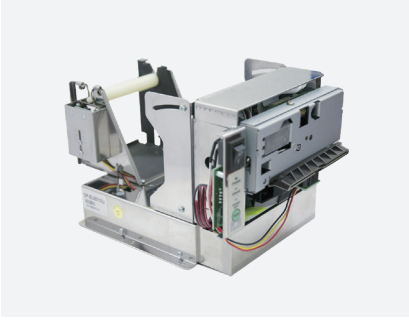
Locker cabinet

Specification



Printing Method	Thermal Line	
Paper width	79.5±0.5mm	
Printing Speed	220mm/s	
Character Set	ASCII, GB18030(Chinese), BIG5, Codepage	
Print Font	ASCII: 9x17, 12x24	
Barcode	1D	UPC-A, UPC-E, EAN-13, EAN-8, CODE39, ITF25, CODEBAR, CODE93, CODE128
	2D	PDF417, QR CODE, DATA MATRIX
Interface	RS-232/USB/Parallel	
Cash Drawer Control	DC24V, 2A, 6PIN RJ-11Socket	
Paper Supply Method	Manual	
TPH	100KM	
Auto Cutter Type	Guillotine	
Paper Roll Diameter	120mm (Max.)	
Power Supply	DC24V±10% 2A	
Auto Cutter Life	1,000,000 Cuts	
Cutting Method	Partial Cut /Full Cut	
Operating Temp/Humidity	0~50°C /10%~80%	
Storage Temp/Humidity	-20~60°C /10%~90%	

◆ SP-EU801 / SP-EU802



ATM



Fire control



SST

Specification



Printing Method	Thermal Line	
Resolution	8 dots/mm(203dpi), 576 dots/line	
Printing Speed	220mm/s	
Character Set	ASCII, GB18030(Chinese), BIG5 (24x24), Codepage	
Barcode	1D	UPC-A, UPC-E, EAN-13, EAN-8, CODE39, ITF25, CODEBAR, CODE93, CODE128
	2D	PDF417, QR CODE, DATA MATRIX
Print Font	ASCII Font A: 9x17 ; Font B: 12x24 ; Font B: 8x16	
Paper Type	Thermal Paper	
Interface	RS-232 + USB	
Paper Supply Method	Manual	
Power Supply	DC 24V±10%, 2A	
Paper Thickness	0.06mm-0.08mm	
Effective Printing Width	72mm	
Paper Width	79.5± 0.5mm	
Paper Roll Diameter	120mm (MAX)	
Emulation	ESC/POS, CPCL(OPTION)	
Driver	Windows XP/Windows Vista/Windows 7/8/10/ Linux/OPOS	
Type	Guillotine	
Auto Cutter Life	1,000,000 Cuts	
Auto Cutter Type	Full Cut/Partial Cut	
Operating Temp/Humidity	0~50°C /10%~80%	
Storage Temp/Humidity	-20~60°C /10%~90%	
Application	KIOSK Solution	
Dimension	202mm×162mm×135mm/237mm×154mm×147mm(L×W×H)	

◆ SP-EU803



Features:

- Integrated design and easy to maintain
- High printing speed 220mm/s
- Compatible with ESC/POS command
- Long printing life



SST



ATM



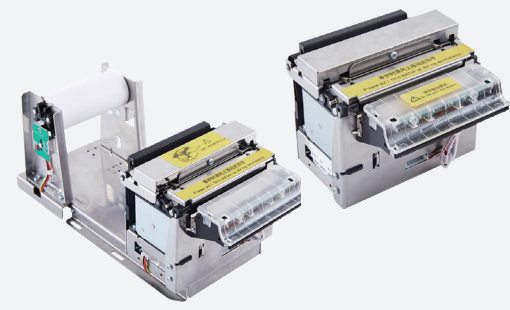
Locker cabinet

Specification



Printing Method	Thermal Line	
Resolution	8 dots/mm(203dpi), 576 dots/line	
Paper Thickness	0.06-0.08mm	
Printing Speed	220mm/s (25% Print Density)	
Character Set	ASCII, GB18030(Chinese), BIG5 (24x24)	
Print Font	ASCII: 12x24; 9x17; 8x16	
Barcode	1D	UPC-A, UPC-E, EAN-13, EAN-8, CODE39, ITF25, CODEBAR, CODE93, CODE128
	2D	PDF417, QR CODE, DATA MATRIX
Paper Type	Thermal paper	
Interface	RS-232 +USB	
Paper Supply Method	Manual	
Power Supply	DC24V±10%, 2A	
Effective Printing Width	72mm	
Paper Width	79.5±0.5mm	
TPH	100km	
Emulation	ESC/POS	
Auto Cutter Life	1,000,000 Cuts	
Auto Cutter Type	Full Cut/Partial Cut	
Dimension	127.5mm×67.2mm×93.5mm(L×W×H)	

◆ SP-EU804 / SP-EU805



Features:

- Anti-blocking, anti-pulling function for choice
- Compatible price with high quality
- Multi ways to install



SST



ATM



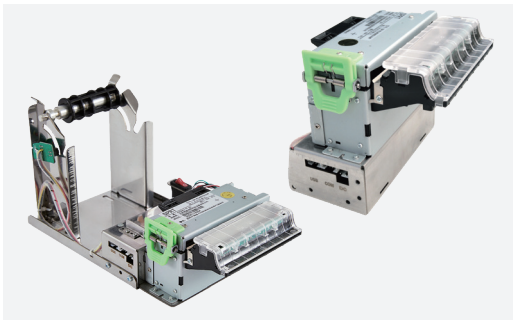
Fire control

Specification



Printing Method	Thermal Line	
Resolution	8 dots/mm(203dpi), 576 dots/line	
Paper Thickness	0.06-0.08mm	
Printing Speed	150mm/s (25% Print Density)	
Character Set	ASCII, GB18030(Chinese), BIG5 (24x24)	
Print Font	ASCII: 12x24 /8x16 / 9x17	
Barcode	1D	UPC-A, UPC-E, EAN-13, EAN-8, CODE39, ITF25, CODEBAR, CODE93, CODE128
	2D	PDF417, QR CODE, DATA MATRIX
Paper Type	Thermal paper	
Interface	RS232+USB	
Paper Supply Method	Manual	
Power Supply	DC24V±10%, 2A	
Effective Printing Width	72mm	
Paper Width	82.5±0.5mm/79.5±0.5mm	
TPH	100km	
Emulation	ESC/POS	
Auto Cutter Life	1,000,000 Cuts	
Auto cutter Type	Full Cut/Partial Cut	
Dimension	EU804U: 95mm×120mm×95mm(L×W×H)	
	EU804UMF: 118mm×120mm×95mm(L×W×H)	
	EU805U: 252mm×109mm×110mm(L×W×H)	
	EU805UMF : 275mm×109mm×110mm(L×W×H)	

◆ SP-EU806/SP-EU807



Features:

- Side-opening method
- Paper feed at 180 degrees, avoid paper jams
- Anti-pulling, anti-blocking paper
- With buffer component



SST



Locker cabinet



Queue Machine

Specification



Printing Method	Thermal Line	
Resolution	8 dots/mm(203dpi), 576 dots/line	
Paper Thickness	0.06-0.1mm	
Printing Speed	250mm/s	
Character Set	ASCII, GB18030(Chinese), BIG5 (24x24)	
Print Font	ASCII: 9×17, 12×24, 8×16	
Barcode	1D	UPC-A, UPC-E, EAN-13, EAN-8, CODE39, ITF25, CODEBAR, CODE93, CODE128
	2D	PDF417, QR CODE, DATA MATRIX
Paper Type	Thermal paper	
Interface	RS232+USB	
Paper Supply Method	Manual	
Power Supply	DC24V±10%, 2A	
Effective Printing Width	72mm	
Paper Width	57.5±0.5mm, 79.5±0.5mm, 82.5±0.5mm	
TPH	100km	
Emulation	ESC/POS	
Auto Cutter Life	1,500,000 Cuts	
Auto cutter Type	Full Cut/Partial Cut	
Operating Temp/Humidity	0~50°C /10~80%	
Storage Temp/Humidity	-20~60°C /10~90%	

◆ SP-EU8010/SP-EU8011



Features:

- Receipt paper printing speed: 130mm/s
- Paper feeding and cutting automatically
- 180° paper feeding path, reducing the chances of paper jams effectively



SST



ATM



Queue Machine

Specification



Printing Method	Thermal Line	
Resolution	8 dots/mm(203dpi), 576 dots/line	
Paper Thickness	0.06-0.08mm	
Printing Speed	(MAX) 130mm/s(Label paper), 150mm/s(receipt paper)	
Character Set	National standard three-level font: 24X24 , 16X16	
Print Font	ASCII : 12x24, 8x16 , 16x16	
Barcode	1D	UPC-A、UPC-E、EAN-13、EAN-8、CODE39、CODE93、CODABAR、ITF25、CODE128
	2D	PDF417、QR Code、DATA Matrix
Paper Type	Thermal paper	
Interface	RS-232C Serial port,USB port	
Paper Supply Method	Manual	
Power Supply	DC24V±10%, 2A, VH3.96-2PIN electric socket	
Effective Printing Width	72mm	
Paper Width	79.5mm ± 0.5mm	
TPH	100km(Receipt paper)	
Emulation	ESC/POS	
Auto Cutter Life	1,000,000 Cuts	
Auto cutter Type	Full Cut/Partial Cut	
Dimension	SP-EU8010SU:95X 120X 95	
	SP-EU8011SU:252X120X 108	