



# Dong Peng Bo Da Group



## Dong Peng Bo Da Group

ADD: NO.1, HENGTONG ROAD, DAQIUZHANG TOWN, JINGHAI CITY, TIANJIN, CHINA

TEL: +86 22 59385985/59385987/59385989/59385990

FAX: +86 22 59385986

EMAIL: steel@tdpbd.com; steel@fwssteel.com

WEBSITE: www.tdpbd.com;

www.galvanized-steelpipes.com;

www.dongpengboda.com.cn



东鹏博大 志存高远



# CATALOGUE

01	GROUP INTRODUCTION	PAGE 02
	INSTITUTIONAL FRAMEWORK	PAGE 03
	COMPANY CULTURE	PAGE 04
	CERTIFICATE	PAGE 05
	TECHNIQUE PROCESS	PAGE 06
	WORKSHOP AND EQUIPMENT	PAGE 07&08
02	GALVANIZED ROUND STEEL PIPE	PAGE 09&10
	GALVANIZED SQUARE AND RECTANGULAR STEEL TUBE	PAGE 11&12
	SQUARE AND RECTANGULAR STEEL TUBE	PAGE 13&14
	STEEL CONDUIT(EMT/RSC/IMC)	PAGE 15&16
	ERW ROUND STEEL PIPE	PAGE 17&18
	COLD FORMED STEEL PROFILE	PAGE 19
	OTHER PRODUCTS	PAGE 20
03	SALES NETWORK	PAGE 21
	PROJECTS	PAGE 22



## Group Introduction

Dongpengboda group is located in Daqiu Zhuang, Tianjin, which is the biggest welded pipe production base in the China.

Group is founded in 2006, and the register capital is 205 million RMB. It has four subsidiary companies: Tianjin Tianfeng Steel Pipe Co., Ltd; Tianjin Tianwang Steel Pipe Co., Ltd; Tianjin FWS Trading Co., Ltd; Dongpengboda (Tianjin) Industrial Co., Ltd. After years of hard work, we have formed a diversified investment pattern of development, and in accordance with the requirements of new industrialization, we have given full play to their own advantages to achieve the scale, structure, quality and efficiency overall promotion.

Group companies have a professional production of galvanized round pipe, galvanized square and rectangular tube, black square and rectangular steel tube and other various types of steel pipes. We have a total of 17 steel pipe production lines, which have advanced technology and equipment and are all controlled by computer. Production process is in strict accordance with the ISO9001 quality management system, and steel pipe can be customized in GB, American standard, British standard, European standard, Australian standard and Japanese standard. Therefore our product quality has reliable guarantee and can be exported to North America, South America, Europe, Middle East, Southeast Asia, Australia and many other countries and regions. The annual output is 0.88 million tons. Products are widely used in many fields such as vegetables, nursery seedling greenhouses, threading pipe, steel liner tube in family decorate, construction steel structure, ship machinery, container, steel-wood furniture, bridge structure and so on. Besides, we also export hot dipped galvanized pipe, cold rolled steel pipe, petroleum casing pipe, seamless steel pipe, shaped pipe, galvalume steel coil, PPGI, corrugated sheet and PC strand. The annual sales reach 3.8 billion RMB.

### Subsidiaries Introduction:

#### Dongpengboda (Tianjin) Industrial Co., Ltd

Dongpengboda (Tianjin) Industrial Co., Ltd, a subsidiary company of Dongpengboda Group, was founded in December of 2010, and its registered capital was 50 million RMB. We have 9 production lines of galvanized round, square and rectangular pipes. The annual output reaches 400,000 tons.

#### Tianjin Tianfeng Steel Pipe Co., Ltd

Tianjin Tianfeng Steel Pipe Co., Ltd is a subsidiary company of Dongpengboda Group. It was founded in March of 2006, and its registered capital was 58 million RMB. It has 2 square and rectangular steel tube production lines. The annual output of various types of square and rectangular steel tubes reaches 200,000 tons.

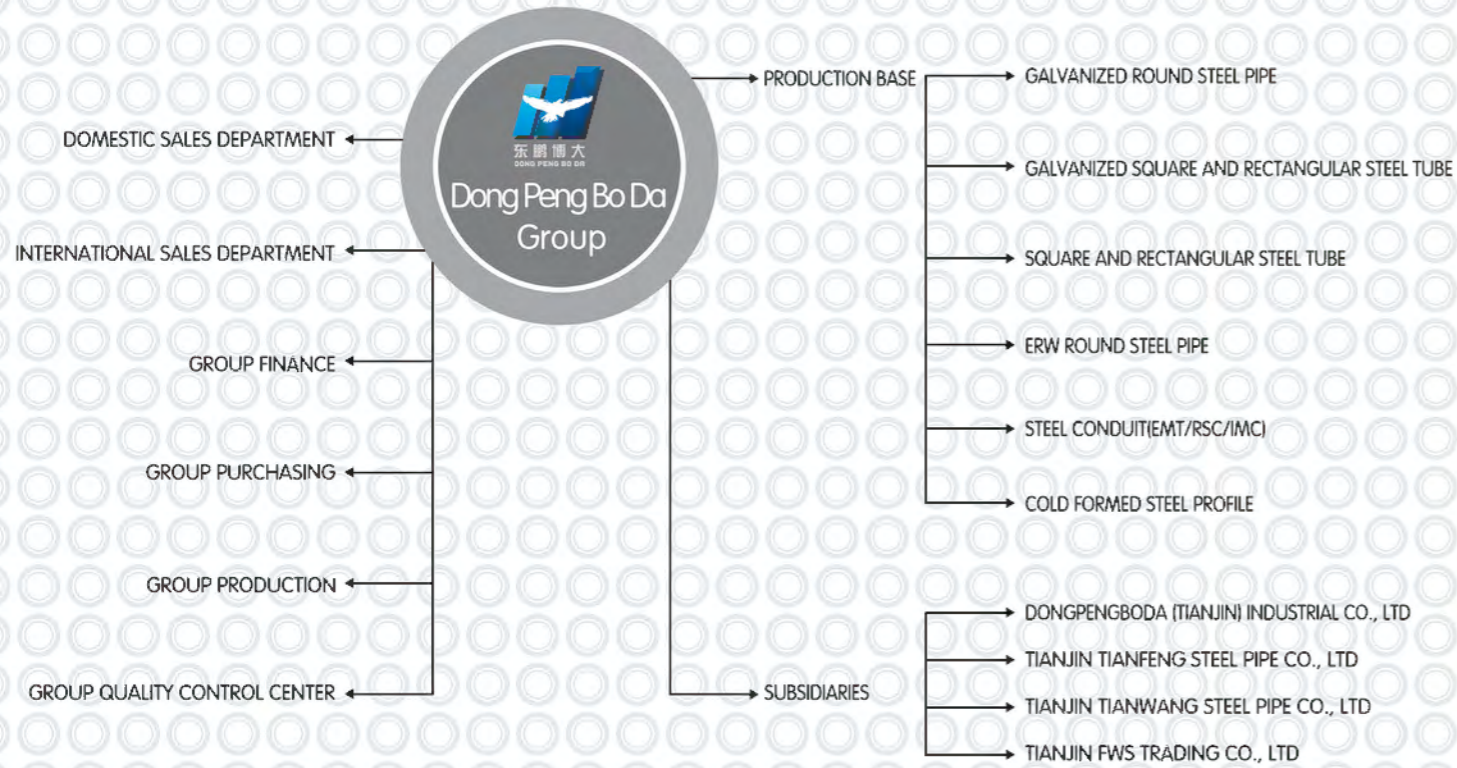
#### Tianjin Tianwang Steel Pipe Co., Ltd

Tianjin Tianwang Steel Pipe Co., Ltd is a subsidiary company of Dongpengboda Group. It was founded in December of 2006, and its registered capital was 70 million RMB. It has 6 square and rectangular tube production lines. The annual output of various types of square and rectangular steel tubes reaches 500,000 tons.

#### Tianjin FWS Trading Co., Ltd

Tianjin FWS Trading Co., Ltd. is a subsidiary company of Dongpengboda Group. It was founded in December of 2008, and its registered capital was 27 million RMB. It has independent import and export rights in goods and technology. The company mainly exports galvanized round pipe, galvanized square and rectangular tube, black square and rectangular tube and other kinds of steel pipes. Other mainly export products are Hot-dip galvanized steel pipe, cold rolled steel pipe, petroleum Casing pipe, seamless steel pipe, special-shaped pipe, galvalume steel coil, color coated coil, corrugated sheet and PC strand.

## © GROUP INSTITUTIONAL FRAMEWORK



## COMPANY CULTURE

### Objective:

People-oriented, keep the law and honest, advance with times, leaping development

### Purpose:

Advocate technology-based; devote classic quality

### Management concept:

Market as the guide; talent as the center

Quality to survive; technology to develop

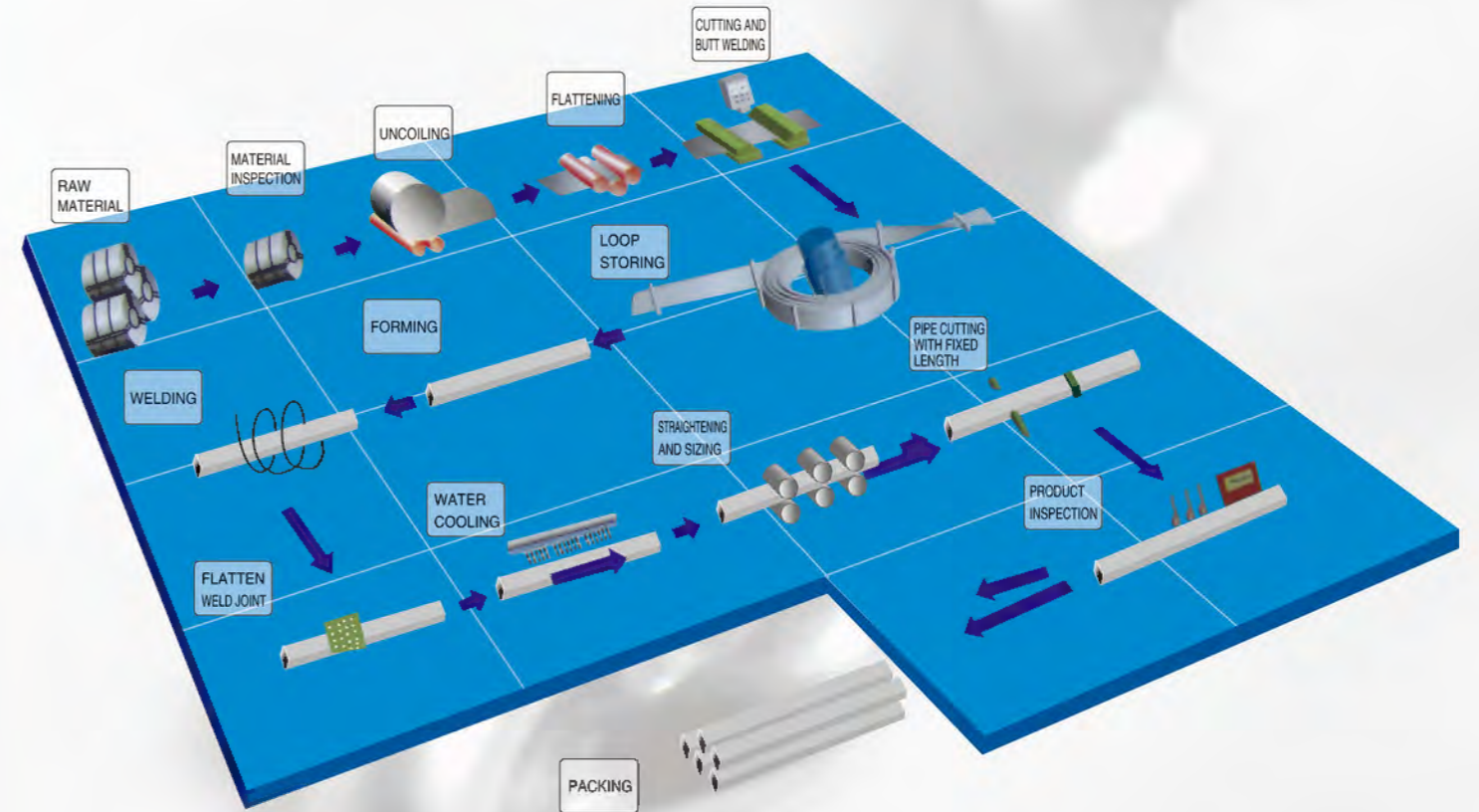
Management to achieve benefit; credit to win the world



# CERTIFICATE

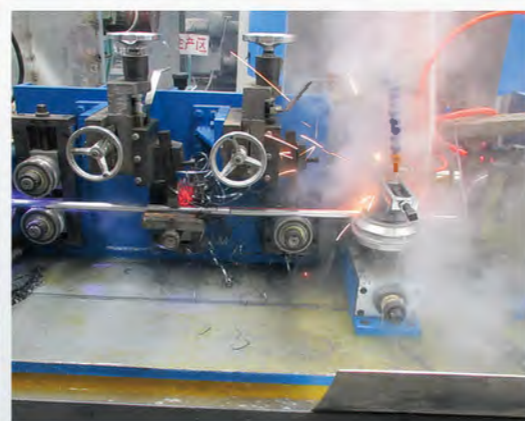


# TECHNIQUE PROCESS



## WORKSHOP AND EQUIPMENT

OUR COMPANY HAVE A TOTAL OF 17 PRODUCTION LINES, 4 LINES FOR GALVANIZED SQUARE AND RECTANGULAR STEEL TUBE, 5 LINES FOR GALVANIZED ROUND STEEL PIPE, 8 LINES FOR BLACK SQUARE AND RECTANGULAR STEEL TUBE.



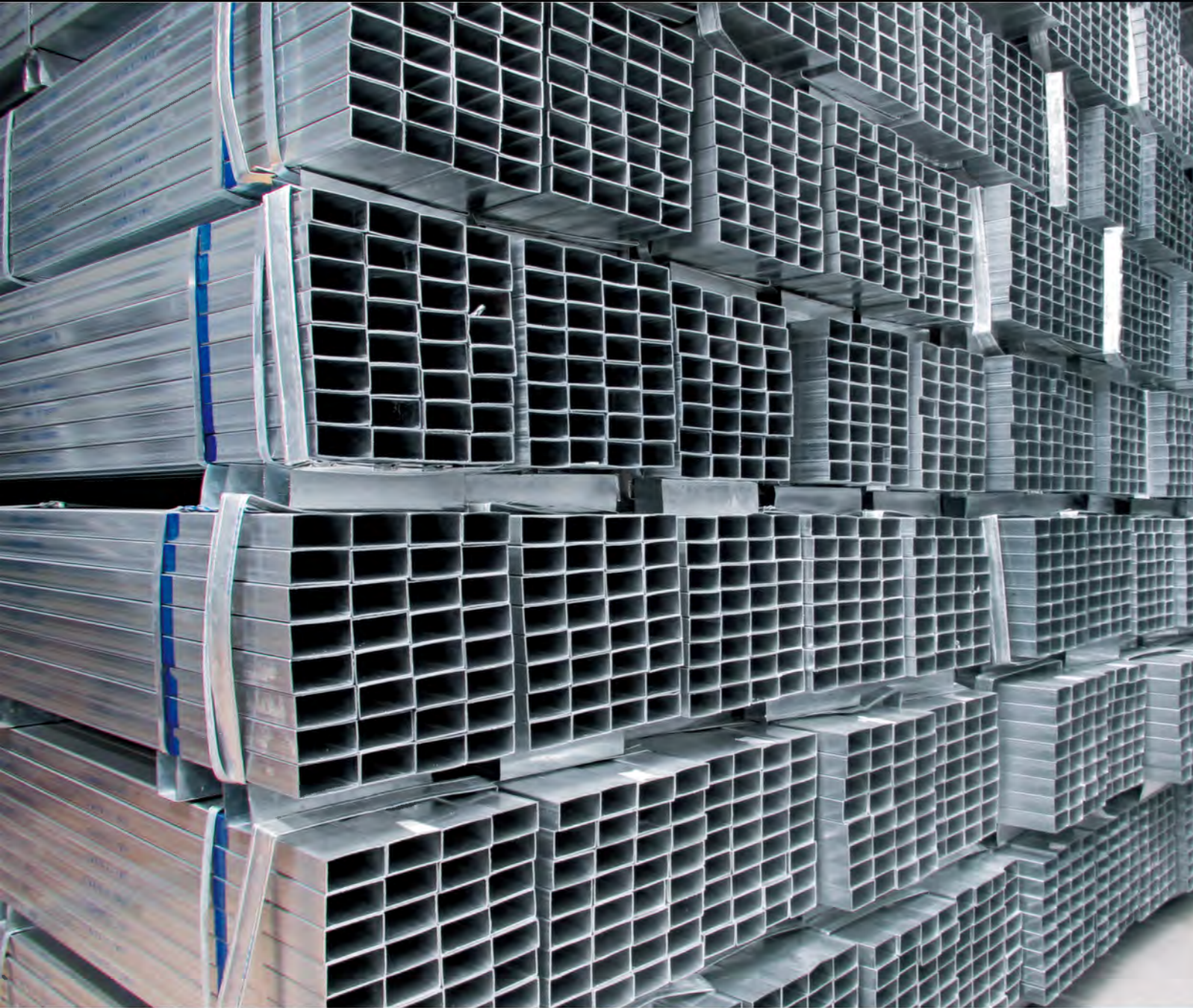
## ◎ GALVANIZED ROUND STEEL PIPE

OD		Thickness (MM)																													
DN	INCH	0.6	0.7	0.8	0.9	1.0	1.1	1.2	1.3	1.4	1.5	1.6	1.7	1.8	1.9	2.0	2.1	2.2	2.3	2.5	3.0	3.25	3.5	4.0	4.5	5.0	5.5	6.0	8.0	10.0	
15	1/2"	✓	✓	✓	✓	✓	✓	✓	✓	✓	✓	✓	✓	✓	✓	✓	✓	✓	✓	✓											
20	3/4"	✓	✓	✓	✓	✓	✓	✓	✓	✓	✓	✓	✓	✓	✓	✓	✓	✓	✓	✓											
25	1"	✓	✓	✓	✓	✓	✓	✓	✓	✓	✓	✓	✓	✓	✓	✓	✓	✓	✓	✓	✓										
32	1-1/4"	✓	✓	✓	✓	✓	✓	✓	✓	✓	✓	✓	✓	✓	✓	✓	✓	✓	✓	✓	✓	✓									
40	1-1/2"	✓	✓	✓	✓	✓	✓	✓	✓	✓	✓	✓	✓	✓	✓	✓	✓	✓	✓	✓	✓	✓	✓								
50	2"	✓	✓	✓	✓	✓	✓	✓	✓	✓	✓	✓	✓	✓	✓	✓	✓	✓	✓	✓	✓	✓	✓	✓	✓	✓	✓	✓	✓	✓	✓

OD		Thickness (MM)																													
DN	INCH	0.6	0.7	0.8	0.9	1.0	1.1	1.2	1.3	1.4	1.5	1.6	1.7	1.8	1.9	2.0	2.1	2.2	2.3	2.5	3.0	3.25	3.5	4.0	4.5	5.0	5.5	6.0	8.0	10.0	
65	2-1/2"		✓	✓	✓	✓	✓	✓	✓	✓	✓	✓	✓	✓	✓	✓	✓	✓	✓	✓	✓	✓	✓	✓	✓	✓	✓	✓	✓	✓	✓
80	3"			✓	✓	✓	✓	✓	✓	✓	✓	✓	✓	✓	✓	✓	✓	✓	✓	✓	✓	✓	✓	✓	✓	✓	✓	✓	✓	✓	✓
100	4"				✓	✓	✓	✓	✓	✓	✓	✓	✓	✓	✓	✓	✓	✓	✓	✓	✓	✓	✓	✓	✓	✓	✓	✓	✓	✓	✓
125	5"					✓	✓	✓	✓	✓	✓	✓	✓	✓	✓	✓	✓	✓	✓	✓	✓	✓	✓	✓	✓	✓	✓	✓	✓	✓	✓
150	6"						✓	✓	✓	✓	✓	✓	✓	✓	✓	✓	✓	✓	✓	✓	✓	✓	✓	✓	✓	✓	✓	✓	✓	✓	✓
200	8"							✓	✓	✓	✓	✓	✓	✓	✓	✓	✓	✓	✓	✓	✓	✓	✓	✓	✓	✓	✓	✓	✓	✓	✓
250	10"									✓	✓	✓	✓	✓	✓	✓	✓	✓	✓	✓	✓	✓	✓	✓	✓	✓	✓	✓	✓	✓	✓



## ◎ GALVANIZED SQUARE AND RECTANGULAR STEEL TUBE

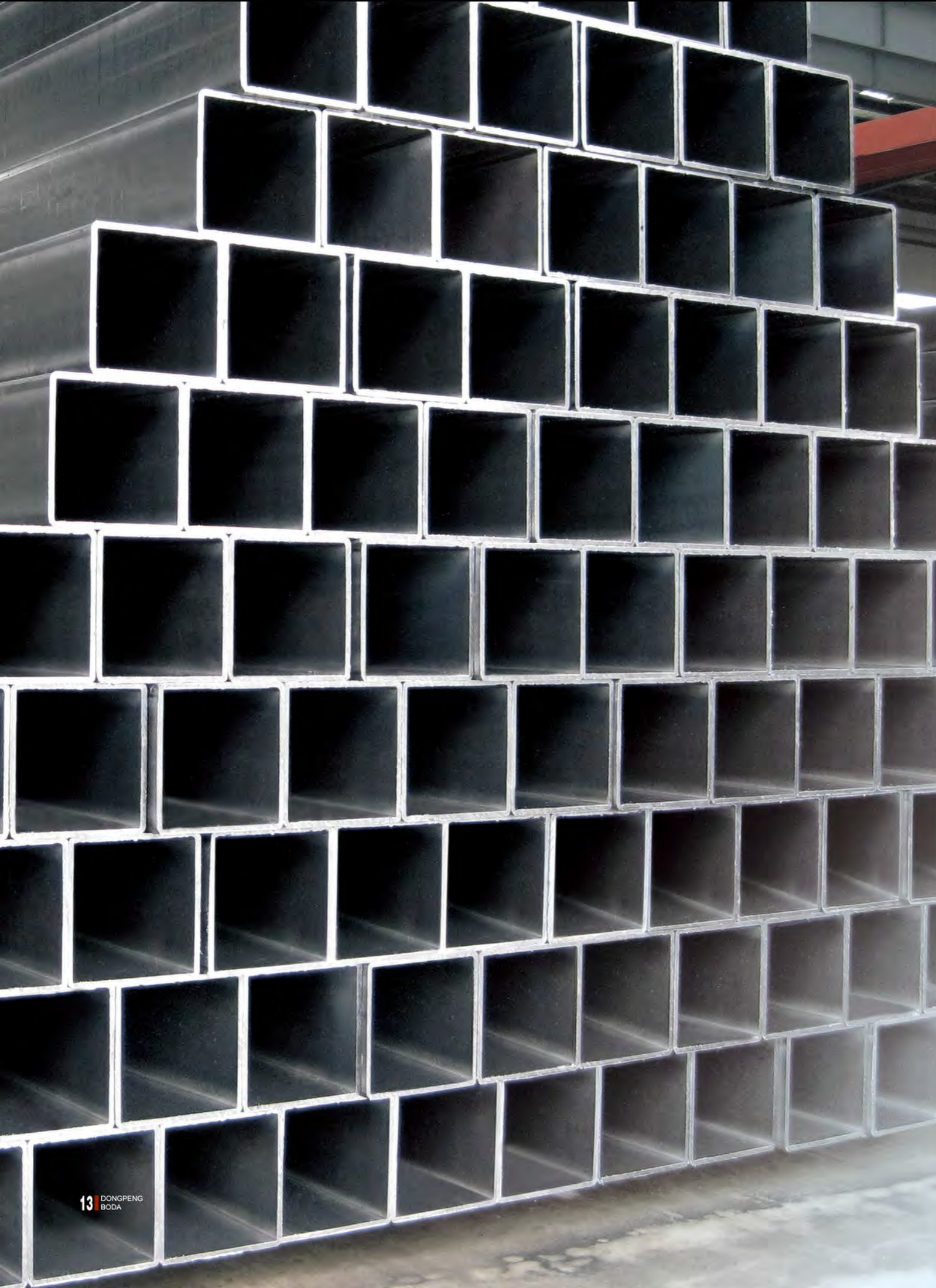


Galvanized Square Steel Tube/ Hollow Section			
Size(MM)	Thickness(MM)	Size(MM)	Thickness(MM)
20*20	1.2-2.0	125*125	2.5-12.0
25*25	1.2-3.0	130*130	2.5-12.0
30*30	1.2-3.0	140*140	2.5-12.0
32*32	1.2-3.0	150*150	2.5-14.0
38*38	1.2-3.0	160*160	2.75-14.0
40*40	1.2-4.0	175*175	2.75-14.0
50*50	1.2-6.0	180*180	2.75-14.0
60*60	1.5-6.0	200*200	2.75-16.0
70*70	1.5-6.0	220*220	3.0-16.0
75*75	1.5-6.0	250*250	3.0-16.0
80*80	1.5-8.0	300*300	3.5-16.0
90*90	1.5-8.0	350*350	4.0-16.0
100*100	1.8-12.0	400*400	5.0-16.0
110*110	2.0-12.0	450*450	6.0-16.0
120*120	2.5-12.0	500*500	6.0-16.0

Galvanized Rectangular Steel Tube/Hollow Section			
Size(MM)	Thickness(MM)	Size(MM)	Thickness(MM)
15*20	1.2-2.0	100*150	2.5-12.0
20*30	1.2-3.0	100*200	2.5-14.0
20*40	1.2-3.0	100*250	2.5-14.0
25*50	1.2-3.0	100*300	2.75-14.0
30*40	1.2-3.0	150*200	2.75-14.0
30*50	1.2-4.0	150*250	2.75-16.0
30*60	1.2-4.0	150*300	2.75-16.0
38*76	1.2-4.0	150*350	3.0-16.0
40*50	1.2-4.0	200*250	3.0-16.0
40*60	1.2-4.0	200*300	3.5-16.0
40*80	1.2-4.0	200*400	3.5-16.0
50*70	1.2-6.0	200*500	3.5-16.0
50*75	1.2-6.0	250*300	3.5-16.0
50*80	1.5-6.0	250*400	4.0-16.0
50*100	1.5-6.0	250*500	4.0-16.0
50*120	1.5-6.0	300*400	4.0-16.0





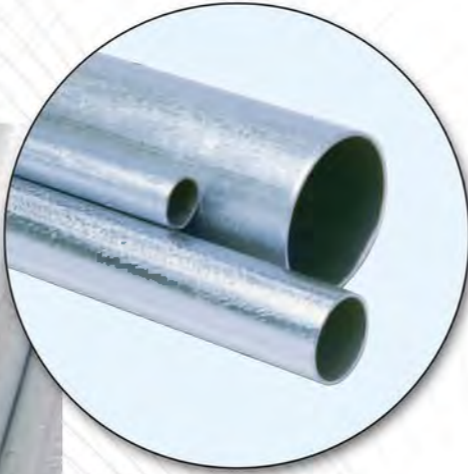


## ◎ SQUARE AND RECTANGULAR STEEL TUBE

Square Steel Tube / Hollow Section			
Size(MM)	Thickness(MM)	Size(MM)	Thickness(MM)
15*15	0.6-2.0	125*125	2.5-12.0
20*20	0.6-2.0	130*130	2.5-12.0
25*25	0.6-3.0	140*140	2.5-12.0
30*30	0.6-3.0	150*150	2.5-14.0
32*32	0.6-3.0	160*160	2.75-14.0
38*38	0.6-3.0	175*175	2.75-14.0
40*40	0.6-4.0	180*180	2.75-14.0
50*50	0.8-6.0	200*200	2.75-16.0
60*60	1.0-6.0	220*220	3.0-16.0
70*70	1.0-6.0	250*250	3.0-16.0
75*75	1.1-6.0	300*300	3.5-16.0
80*80	1.1-8.0	350*350	4.0-16.0
90*90	1.1-8.0	400*400	5.0-16.0
100*100	1.1-12.0	450*450	6.0-16.0
110*110	2.0-12.0	500*500	6.0-16.0
120*120	2.5-12.0		

Rectangular Steel Tube / Hollow Section			
Size(MM)	Thickness(MM)	Size(MM)	Thickness(MM)
15*20	0.6-2.0	100*150	2.5-12.0
20*30	0.6-3.0	100*200	2.5-14.0
20*40	0.6-3.0	100*250	2.5-14.0
25*50	0.6-3.0	100*300	2.75-14.0
30*40	0.6-3.0	150*200	2.75-14.0
30*50	0.6-4.0	150*250	2.75-16.0
30*60	0.6-4.0	150*300	2.75-16.0
38*76	0.8-4.0	150*350	3.0-16.0
40*50	0.8-4.0	200*250	3.0-16.0
40*60	0.8-4.0	200*300	3.5-16.0
40*80	1.0-4.0	200*400	3.5-16.0
50*70	1.0-6.0	200*500	3.5-16.0
50*75	1.0-6.0	250*300	3.5-16.0
50*80	1.0-6.0	250*400	4.0-16.0
50*100	1.1-6.0	250*500	4.0-16.0
50*120	1.1-6.0	300*400	4.0-16.0
60*80	1.1-6.0	300*500	5.0-16.0
60*100	1.1-6.0	300*600	6.0-16.0
60*120	1.1-6.0	350*400	5.0-16.0
75*125	1.1-6.0	350*450	6.0-16.0
75*150	1.1-6.0	350*500	6.0-16.0
80*100	1.1-8.0	400*450	6.0-16.0
80*120	1.1-8.0	400*600	6.0-16.0
80*160	2.0-8.0		

# STEEL CONDUIT (EMT/RSC/ IMC)



STANDARD EMT CONDUIT							
Standard	Nominal Size	Nominal Outside Diameter	Nominal Wall Thickness		Nominal Length		
UL 797 ANSI C 80.3	inch	inch	mm	inch	mm	feet	mm
	1/2"	0.706	17.93	0.042	1.07	10	3050
	3/4"	0.922	23.42	0.049	1.25	10	3050
	1"	1.163	29.54	0.057	1.45	10	3050
	1-1/4"	1.150	38.35	0.065	1.65	10	3050
	1-1/2"	1.740	44.20	0.065	1.65	10	3050
	2"	2.197	55.80	0.065	1.65	10	3050
	2-1/2"	2.875	73.03	0.072	1.83	10	3050
	3"	3.500	88.90	0.072	1.83	10	3050
	3-1/2"	4.000	101.60	0.083	2.11	10	3050
4"	4.500	114.30	0.083	2.11	10	3050	

MATERIAL: Q195 & Q235  
CLASS: class 3 & class 4

ECONOMIC EMT CONDUIT						
Standard	Size	Outside Diameter	Thin Wall Thickness	Nominal Length		
UL 797 ANSI C 80.3	inch	inch	mm	mm	feet	mm
	1/2"	0.706	17.93	0.85	10	3050
	3/4"	0.922	23.42	1.00	10	3050
	1"	1.163	29.54	1.10	10	3050
	1-1/4"	1.150	38.35	1.30	10	3050
	1-1/2"	1.740	44.20	1.30	10	3050
	2"	2.197	55.80	1.40	10	3050
	3"	3.500	88.90	1.80	10	3050
	4"	4.500	114.30	2.10	10	3050

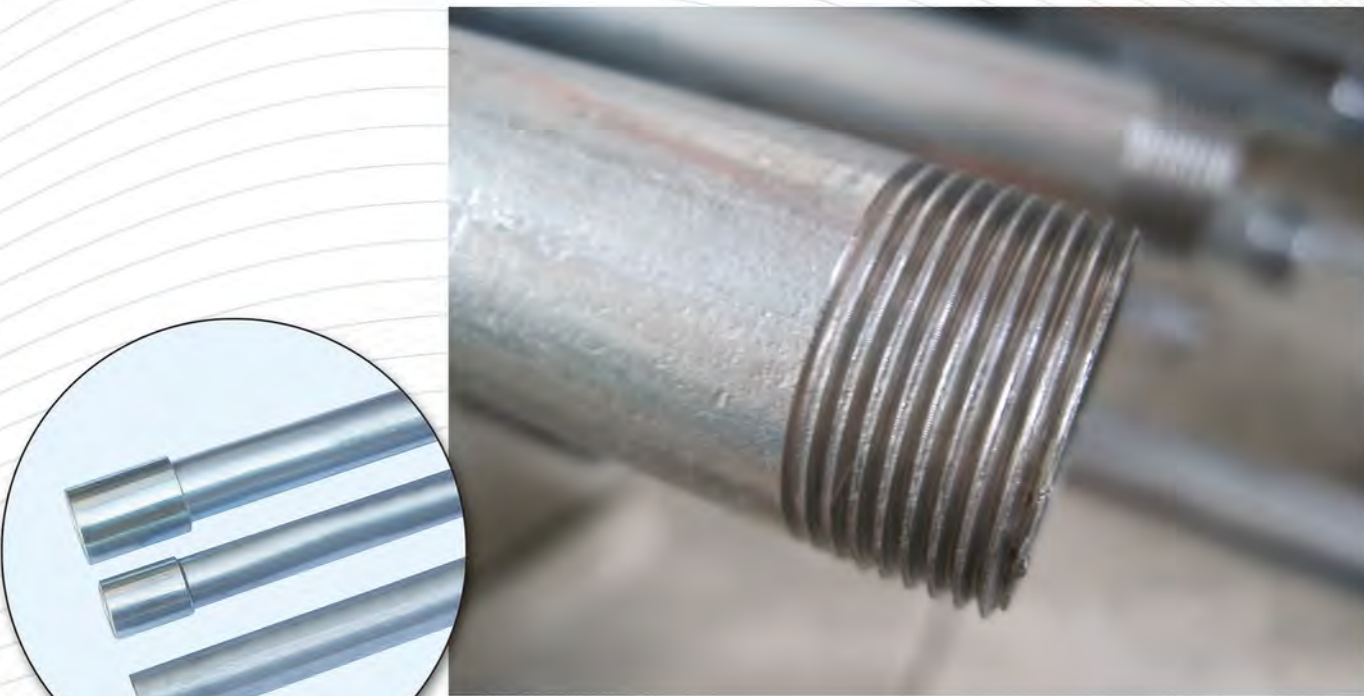
MATERIAL: Q195 & Q235  
CLASS :class 3

STANDARD RSC CONDUIT							
Standard	Nominal Size	Nominal Outside Diameter	Nominal Wall Thickness		Nominal Length		
UL 6 ANSI C 80.1	inch	inch	mm	inch	mm	feet	mm
	1/2"	0.840	21.34	0.104	2.64	10	3050
	3/4"	1.050	26.67	0.107	2.72	10	3050
	1"	1.315	33.40	0.126	3.20	10	3050
	1-1/4"	1.660	42.16	0.133	3.38	10	3050
	1-1/2"	1.900	48.26	0.138	3.51	10	3050
	2"	2.375	60.33	0.146	3.71	10	3050
	2-1/2"	2.875	73.03	0.193	4.90	10	3050
	3"	3.500	88.90	0.205	5.21	10	3050
	3-1/2"	4.000	101.60	0.215	5.46	10	3050
	4"	4.500	114.30	0.225	5.72	10	3050
	5"	5.563	141.30	0.245	6.22	10	3050
6"	6.625	168.28	0.266	6.76	10	3050	

MATERIAL: Q195 & Q235  
CLASS: class 4  
BOTH END: threaded both end with one coupling and one plastic cap

STANDARD STEEL CONDUIT								
Standard	Nominal Size	Outside Diameter(mm)		Wall Thickness(mm)		Thread Length(mm)		Length
BS 4568	mm	min	max	standard	thinwall	min	max	mm
	16	15.70	16.0	1.4±0.15	1.35	11.50	13.50	3750
	20	19.70	20.0	1.6±0.15	1.35	13.00	15.00	3750
	25	24.60	25.0	1.6±0.15	1.35	16.00	18.00	3750
	32	31.60	32.0	1.6±0.15	1.35	18.00	20.00	3750
	40	39.50	40.0	1.6±0.15	1.35	19.00	22.00	3750
	50	49.50	50.0	1.6±0.15	1.35	19.00	22.00	3750

MATERIAL: Q195 & Q235  
CLASS: class 3 & class 4  
BOTH END: threaded both end with one coupling and one plastic cap



# ERW ROUND STEEL PIPE

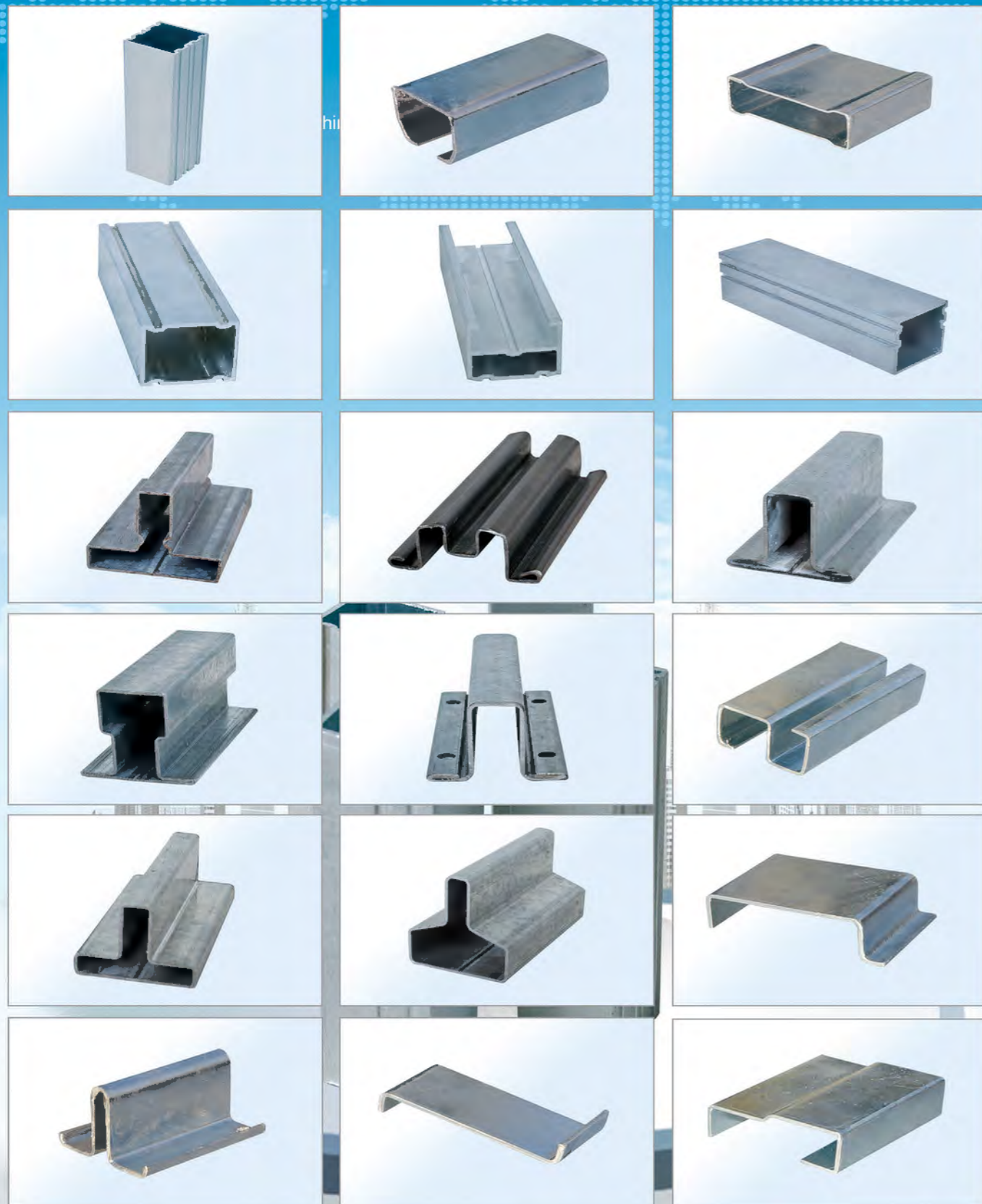
OD		ERW Round Steel Pipe Thickness (MM)																													
DN	INCH	0.6	0.7	0.8	0.9	1.0	1.1	1.2	1.3	1.4	1.5	1.6	1.7	1.8	1.9	2.0	2.1	2.2	2.3	2.5	3.0	3.25	3.5	4.0	4.5	5.0	5.5	6.0	8.0	10.0	
15	1/2"	✓	✓	✓	✓	✓	✓	✓	✓	✓	✓	✓	✓	✓	✓	✓	✓	✓	✓	✓	✓										
20	3/4"	✓	✓	✓	✓	✓	✓	✓	✓	✓	✓	✓	✓	✓	✓	✓	✓	✓	✓	✓	✓										
25	1"	✓	✓	✓	✓	✓	✓	✓	✓	✓	✓	✓	✓	✓	✓	✓	✓	✓	✓	✓	✓										
32	1-1/4"	✓	✓	✓	✓	✓	✓	✓	✓	✓	✓	✓	✓	✓	✓	✓	✓	✓	✓	✓	✓										
40	1-1/2"	✓	✓	✓	✓	✓	✓	✓	✓	✓	✓	✓	✓	✓	✓	✓	✓	✓	✓	✓	✓										
50	2"		✓	✓	✓	✓	✓	✓	✓	✓	✓	✓	✓	✓	✓	✓	✓	✓	✓	✓	✓	✓	✓	✓	✓	✓	✓	✓	✓	✓	

OD		ERW Round Steel Pipe Thickness (MM)																													
DN	INCH	0.6	0.7	0.8	0.9	1.0	1.1	1.2	1.3	1.4	1.5	1.6	1.7	1.8	1.9	2.0	2.1	2.2	2.3	2.5	3.0	3.25	3.5	4.0	4.5	5.0	5.5	6.0	8.0	10.0	
65	2-1/2"		✓	✓	✓	✓	✓	✓	✓	✓	✓	✓	✓	✓	✓	✓	✓	✓	✓	✓	✓	✓	✓	✓	✓	✓	✓	✓	✓	✓	
80	3"			✓	✓	✓	✓	✓	✓	✓	✓	✓	✓	✓	✓	✓	✓	✓	✓	✓	✓	✓	✓	✓	✓	✓	✓	✓	✓	✓	
100	4"				✓	✓	✓	✓	✓	✓	✓	✓	✓	✓	✓	✓	✓	✓	✓	✓	✓	✓	✓	✓	✓	✓	✓	✓	✓	✓	
125	5"					✓	✓	✓	✓	✓	✓	✓	✓	✓	✓	✓	✓	✓	✓	✓	✓	✓	✓	✓	✓	✓	✓	✓	✓	✓	
150	6"						✓	✓	✓	✓	✓	✓	✓	✓	✓	✓	✓	✓	✓	✓	✓	✓	✓	✓	✓	✓	✓	✓	✓	✓	
200	8"							✓	✓	✓	✓	✓	✓	✓	✓	✓	✓	✓	✓	✓	✓	✓	✓	✓	✓	✓	✓	✓	✓	✓	
250	10"								✓	✓	✓	✓	✓	✓	✓	✓	✓	✓	✓	✓	✓	✓	✓	✓	✓	✓	✓	✓	✓	✓	



# ◎COLD FORMED STEEL PROFILE

We can produce any cold-formed steel profile according to your drawing.



# ◎OTHER PRODUCTS



◎OTHER PRODUCTS



# SALES NETWORK



# PROJECTS

