



Product Selection Manual

GHORIT ELECTRICAL CO., LTD.

Address: NO. 111 Xinguang Road, Xinguang Industrial Zone,
Liushi Town, Yueqing, Wenzhou, Zhejiang, China, 325604.

Tel: +86-577-55771572/1573

Fax: +86-577-55771580

Mail: sales@ghorit.com

Website: www.ghorit.com

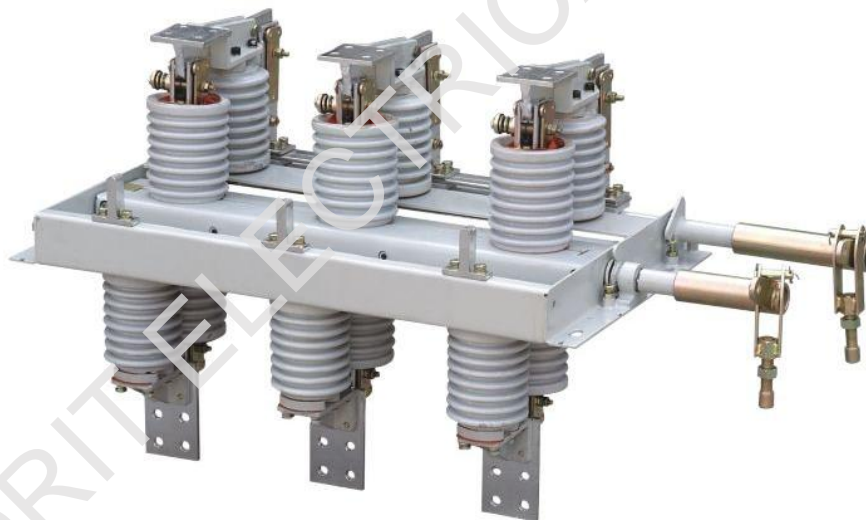




GN30-12(D) Series

Indoor High Voltage Disconnect Switch

GN30-12(D) disconnect switch is an indoor electric apparatus of rated voltage 12kV, three-phase AC50/60Hz. It is used to make break and transfer current for HV electric apparatus under situations with voltage and no-load. The switch applies rotary moving contact which is mounted on the switchgear easily. It adopts wall through installation as well



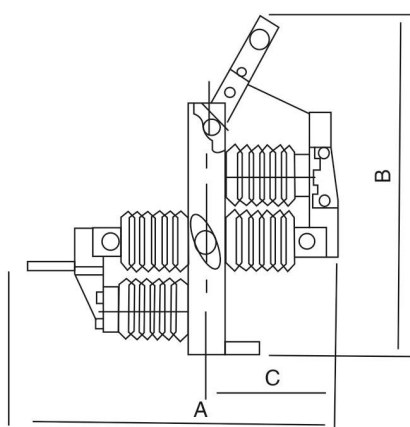
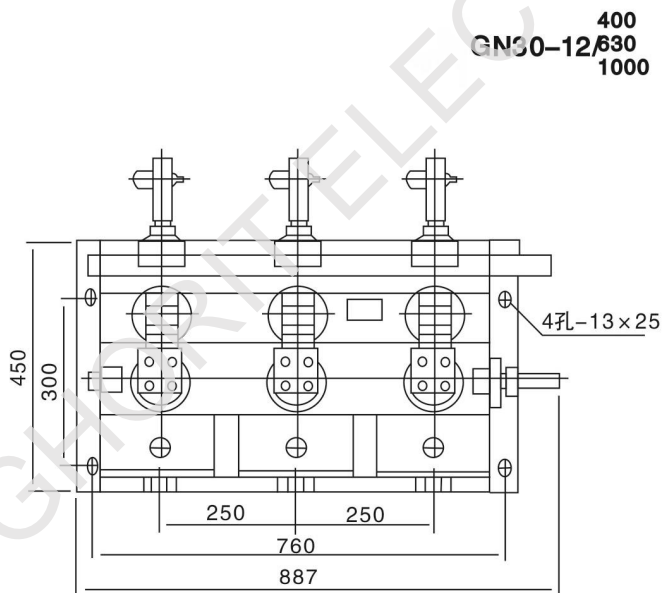
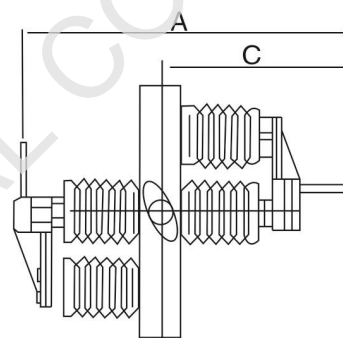
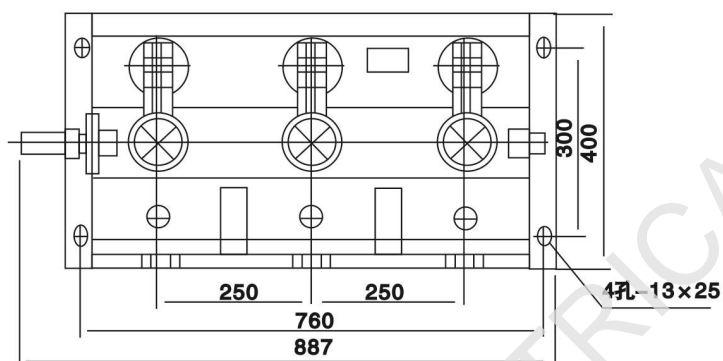
※ Environmental Conditions

- ◆ Ambient temperature: $-25^{\circ}\text{C} \sim +40^{\circ}\text{C}$;
- ◆ Altitude: $\leq 1000\text{m}$;
- ◆ Relative humidity: daily average $\leq 95\%$, monthly average $\leq 90\%$;
- ◆ Earthquake intensity: ≤ 8 level;
- ◆ Installation places: no fire, explosion hazard, serious filthy, chemical corrosion or severe Vibration.

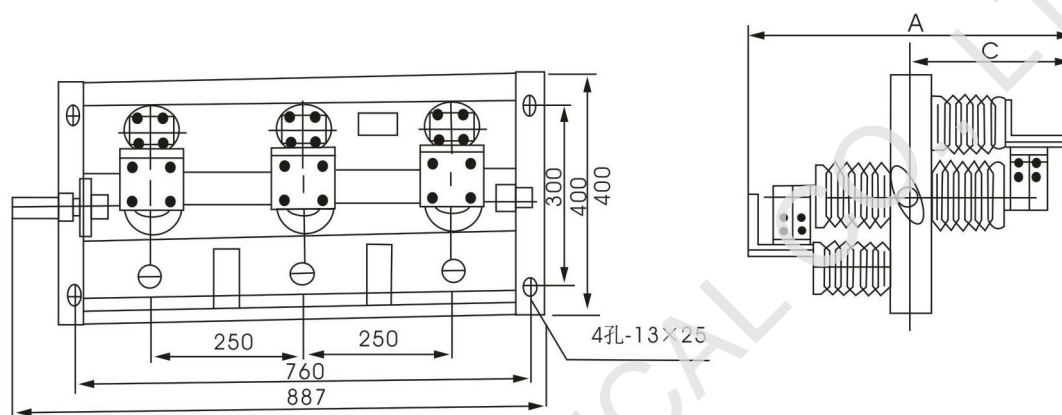
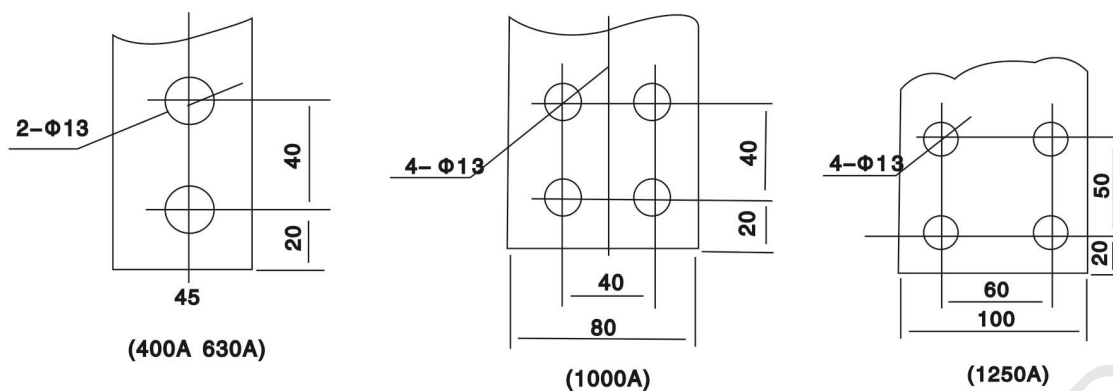
※ Main Technical Parameters

Data Item		Model and specification	GN30-12/400-12.5	GN30-12/630-20	GN30-12/1000-31.5	GN30-12/1250-31.5	GN30-12/(1600-3150)-40
			GN30-12D/400-12.5	GN30-12D/630-20	GN30-12D/1000-31.5	GN30-12D/1250-31.5	GN30-12D/(1600-3150)-40
Rated voltage(kV)			12				
Rated current(A)			400	630	1000	1250	1600~3150
Rated short-time withstand current(kA)			12.5	20	31.5		40
Rated short-circuit duration(s)			4				
Rated peak withstand curren(kA)			31.5	50	80		100
Rated insulating level	1min. PF withstand voltage(kV)		phase to phase/ to earth: 42, across open contacts: 49				
	Lightning impulse withstand voltage(kV)		phase to phase/ to earth: 75, across open contacts: 85				

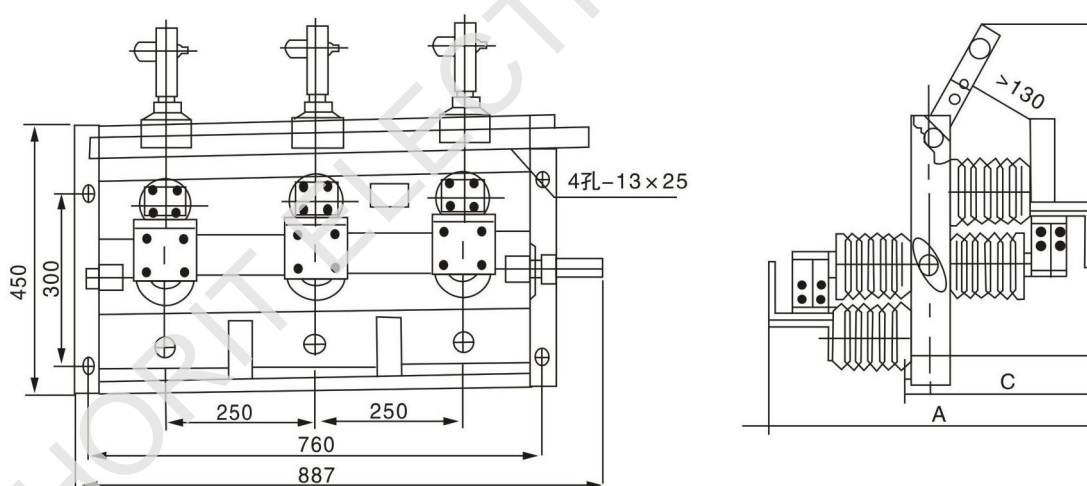
※ General Structure Drawing and Installation Size (unit: mm)



400
GN30-12D/630
1000



GN30-12/1250



GN30-12D/1250

GN30-12						GN30-12D								
400A 630A		1000A		1250A		400A 630A			1000A			1250A		
A	C	A	C	A	C	A	B	C	A	B	C	A	B	C
~560	~315	~580	~332	~580	~295	~550	~610	~240	~575	~615	~245	~580	~600	~295