



**FZW32-24 Series Outdoor High Voltage Isolating Vacuum
Load Break Switch**



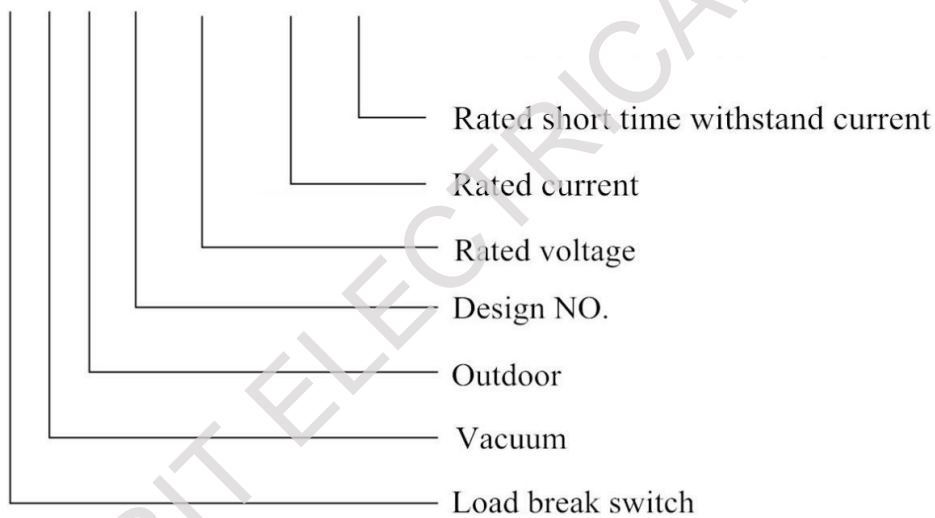
GHORIT ELECTRICAL CO., LTD.

1. Outline

FZW32-24 type outdoor high voltage isolating vacuum break load switch is a new type of load switch which is the integration of mature experience of domestic existing load switch and advanced technology design of external. This load break switch is composed of disconnecter, vacuum interrupter and operating mechanism and other parts. By using the principle of vacuum interrupter, with strong arcing ability, reliable performance, long service life, small volume, no explosion danger, no pollution etc advantage. The product can be used in transmission and distribution system of electric power, metallurgy, mine, chemical industry and other departments as control equipment, especially suitable for frequent operation place.

2. Type Description

F Z W 32 - 24 / 1250-25



3. Environmental Conditions

- a. Altitude $\leq 1000\text{m}$;
- b. Ambient air temperature $-30\sim+40^{\circ}\text{C}$;
- c. Relative humidity: daily average $\leq 95\%$, monthly average $\leq 90\%$;
- d. Without frequent violent vibration.

4. Technical Parameters

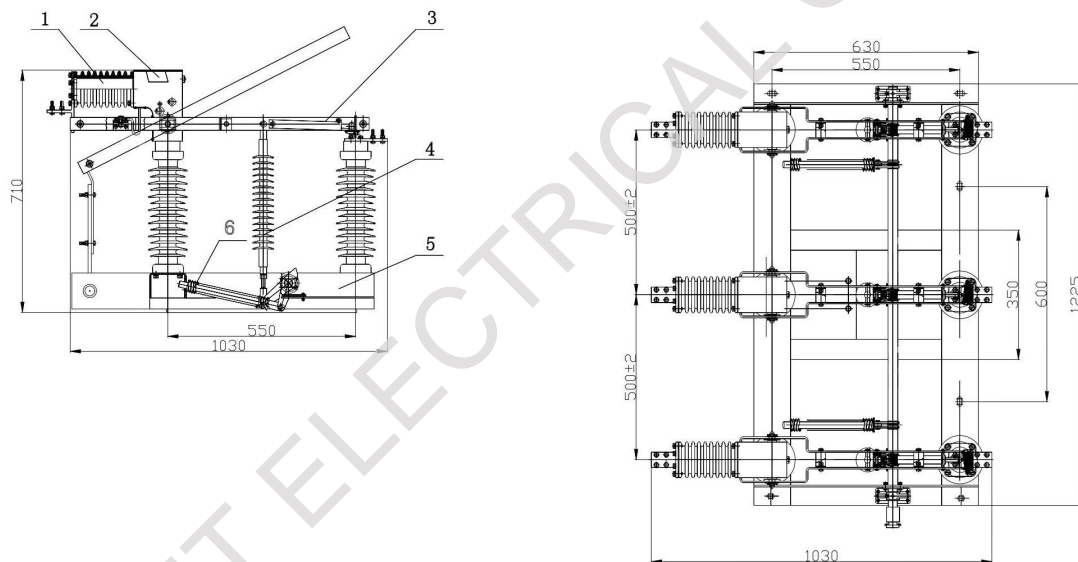
NO.	Name	Unit	Value	
1	Rated voltage	KV	24	
2	Rated frequency	Hz	50	
3	Rated current	A	1250	
4	Rated active load breaking current	A	1250	
5	Rated closed loop breaking current	A	1250	
6	5%rated active load breaking current	A	31.5	
7	Rated cable charging breaking current	A	10	
8	Rated breaking capacity of no-load transformer	KVA	1600	
9	Rated breaking capacitor bank current	A	100	
10	1min power frequency withstand voltage: vacuum fracture/phase-to-phase, phase-to earth, isolating fracture	KV	50/65/79	
11	Lightning impulse withstand voltage: phase-to phase, phase-to-earth/isolating fracture	KV	125/145	
12	Rated short time withstand current(thermal stability)	KA	25	
13	Rated short-circuit duration	S	4	
14	Rated peak withstand current(dynamic stability)	KA	63	
15	Rated short-circuit closing current	KA	63	
16	Mechanical life	Times	10000	
17	Vacuum interrupter contact erosion limit	mm	0.5	
18	Manual operating torque	Nm	≤200	
19	Load break switch vacuum interrupter assembling adjustment	Clearance between open contacts	mm	10±1
		Average opening speed	m/s	1.5±0.2
		Three-phase opening asynchronism	ms	<5
		Three-phase closing asynchronism	ms	<2
		Distance between charged bodies and phase-to-earth	mm	>300
		Auxiliary circuit resistance	μΩ	≥400

5. Installation Ways, Transverse Width and Phase-to-phase Distance

Installation way	Transverse width	AB phase-to-phase distance	BC phase-to-phase distance
Horizontal / vertical	1225mm	500mm	500mm

6. Basic Structure Drawing

The load break switch with three-phase linkage, is mainly consist of frame, vacuum interrupter components, disconnector components and spring mechanism, disconnector and vacuum interrupter are fixed on frame via insulator, spring is fixed on frame.



- | | |
|----------------------------|---------------------|
| 1. Vacuum interrupter | 2. Opening spring |
| 3. Disconnector components | 4. Insulating rod |
| 5. Frame | 6. Spring mechanism |