

## ZW20-12 Series

### Outdoor High Voltage Vacuum Circuit Breaker

ZW20-12 outdoor HV vacuum circuit breaker is a 3-phase AC 50Hz 12kV outdoor switch equipment.

- ◆ Installation way: pole mounted;
- ◆ Pole type: integrated pole;
- ◆ Application: outdoor 12kV substation, power plant.
- ◆ Operation type: manual, electric, remote control.



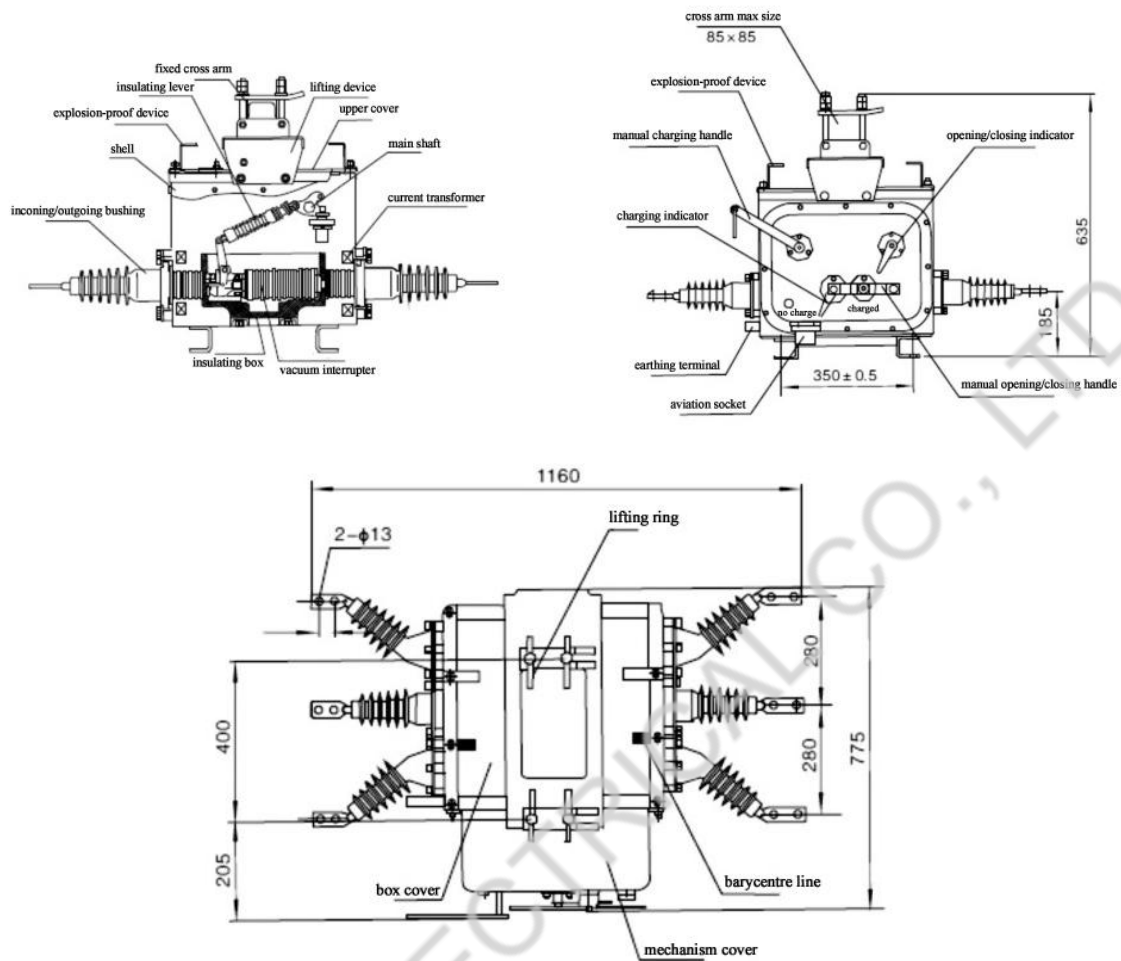
## ※ Environmental Conditions

- ◆ Altitude:  $\leq 2000\text{m}$ ;
- ◆ Air temperature:  $-40^{\circ}\text{C} \sim +40^{\circ}\text{C}$ ; daily temperature change  $\leq 25^{\circ}\text{C}$ ;
- ◆ Wind speed  $\leq 35\text{m/s}$ ;
- ◆ Filthy level: IV;
- ◆ Installation places: No fire, explosion hazard, severe chemical corrosion or serious vibration;
- ◆ Earthquake intensity:  $\leq 8$  level.

## ※ Main Technical Parameters

NO	Item	Unit	Value
1	Rated voltage	kV	12
2	Power frequency withstand voltage (1min)	(dry) inter-phase, earth/fracture	42/48
		(wet) inter-phase, earth	34
3	Lightning impulse withstand voltage (inter-phase, earth/fracture)	kV	75/85
4	Rated current	A	630, 1250
5	Rated frequency	Hz	50
6	Rated short circuit breaking current	kA	20, 25
7	Rated peak value withstand current (peak)	kA	50, 63
8	Rated short time withstand current	kA	20, 25
9	Rated short circuit making current	kA	50, 63
10	Rated short circuit duration	S	4
11	Rated operating sequence	Times	O-0.3S-CO-1 80S-CO
12	Rated short circuit breaking current breaking number	Times	30
13	Mechanical life	Times	10000
14	Rated operation voltage (can be customized)	V	220
15	Opening time	ms	$\leq 80$
16	Closing time	ms	$\leq 120$
17	Fully breaking time	ms	$\leq 100$
18	Rated cable charging breaking current	A	50
19	Grade		E2~C2~M2(10000)
20	Rated short circuit breaking current breaking number	Times	30

※ General Structure Drawing and Installation Size (unit: mm)



※ Installation ways

