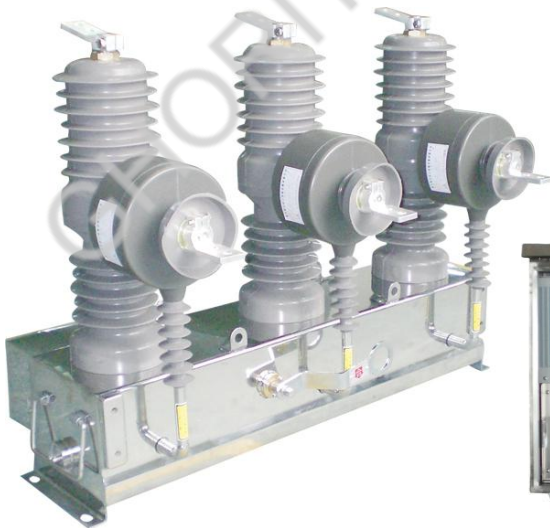
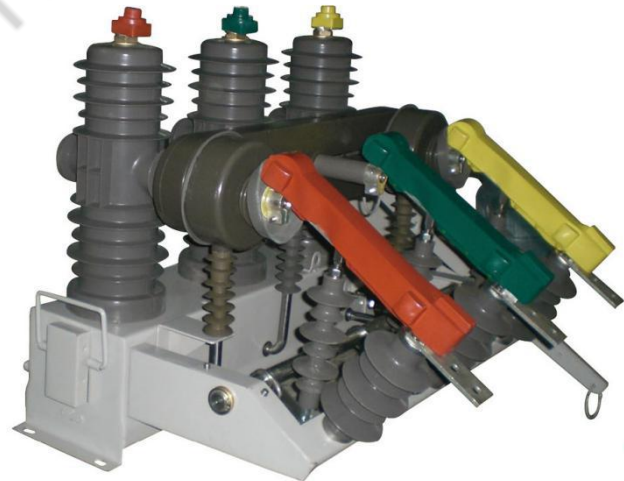


ZW32-12 Series

Outdoor High Voltage Vacuum Circuit Breaker (Recloser)

ZW32-12 outdoor HV vacuum circuit breaker is a 3-phase AC 50Hz 12kV outdoor switch equipment.

- ◆ Installation way: pole mounted;
 - ◆ Operating mechanism: spring operating mechanism and permanent magnetic operating mechanism;
 - ◆ Pole type: upper-lower pole, one-piece pole, embedded pole;
 - ◆ Application: outdoor 12kV substation, power plant.
 - ◆ Operation type: manual, electric, remote control.
-



※ Product Standards

- ◆ IEC62271-100 High Voltage Switchgear and Controlgear Part 100: AC Circuit-breakers
- ◆ GB1984 High Voltage AC Circuit-breakers
- ◆ GB/T11022 Common Specifications for High-voltage Switchgear and Controlgear Standards
- ◆ JB/T 3855 High Voltage AC Vacuum Circuit-breakers
- ◆ DL/T402 Specification of High-voltage AC Circuit-breakers

※ Environmental Conditions

- ◆ Ambient temperature: -35°C ~ +45°C;
- ◆ Altitude: ≤1000m;
- ◆ Wind speed ≤ 35m/s;
- ◆ Earthquake intensity: ≤8 level;
- ◆ Filthy level: IV;
- ◆ Installation places: No fire, explosion hazard or serious filthy.

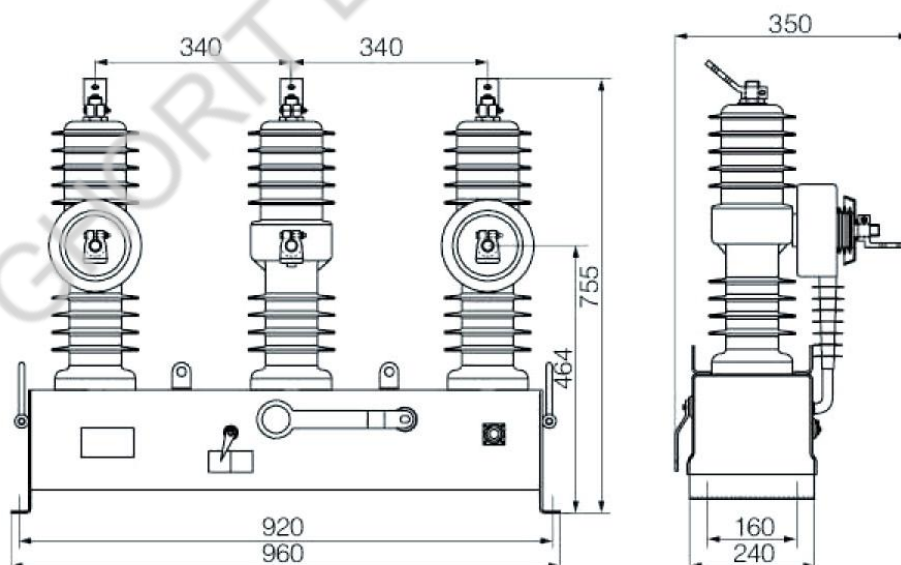
※ Main Technical Parameters

No	Item	Unit	Value
1	Rated voltage	kV	12
2	Rated frequency	Hz	50
3	Rated current	A	630, 1250
4	Rated short circuit breaking current	kA	20, 25
5	Rated peak value withstand current (peak)	kA	40, 50
6	Rated short time withstand current	kA	16, 20
7	Rated short circuit duration	S	4
8	Rated short-circuit closing current (peak)	kA	40, 50
9	Rated operating sequence	Times	O-0.3S-CO-1 80S-CO
10	Mechanical life(spring type/permanent magnetic type)	Times	10000/30000
11	Rated circuit breaking number	Times	10000
12	Rated short-circuit breaking current breaking times	Times	500

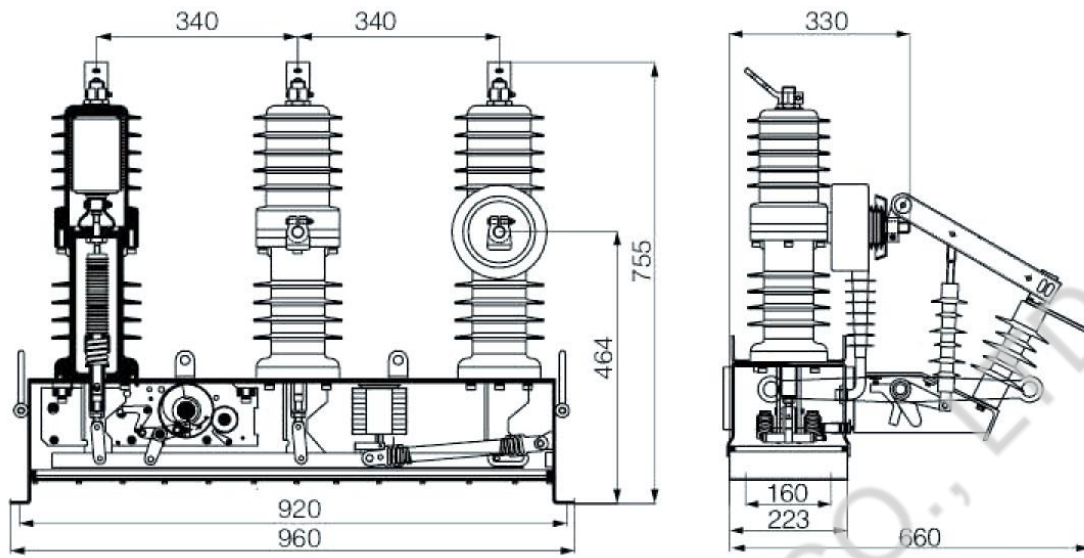
No	Item	Unit	Value
13	Power frequency withstand voltage (1min)	kV	
	(wet) inter-phase, earth		34
	(dry) inter-phase, earth/fracture)		42
14	Lightning impulse withstand voltage (peak) inter-phase, earth/fracture	kV	75
15	Secondary circuit 1min power frequency withstand voltage except of electronic devices	V	2000
16	Clearance between open contacts	mm	9±1
17	Over travel	mm	2± ¹ _{0.5}
18	Opening speed	m/s	1.2±0.2
19	Closing speed	m/s	0.6±0.2
20	Contact closing bounce duration	ms	≤2
21	Inter-phase center distance	mm	340±1.5
22	Three phase closing and opening asynchronism	ms	≤2
23	Each phase conductive circuit resistance	μΩ	≤80
24	Closing time	ms	≤75
25	Opening time	ms	≤50
26	Rated power of energy storage motor	W	40

※ **General Structure Drawing and Installation Size (unit: mm)**

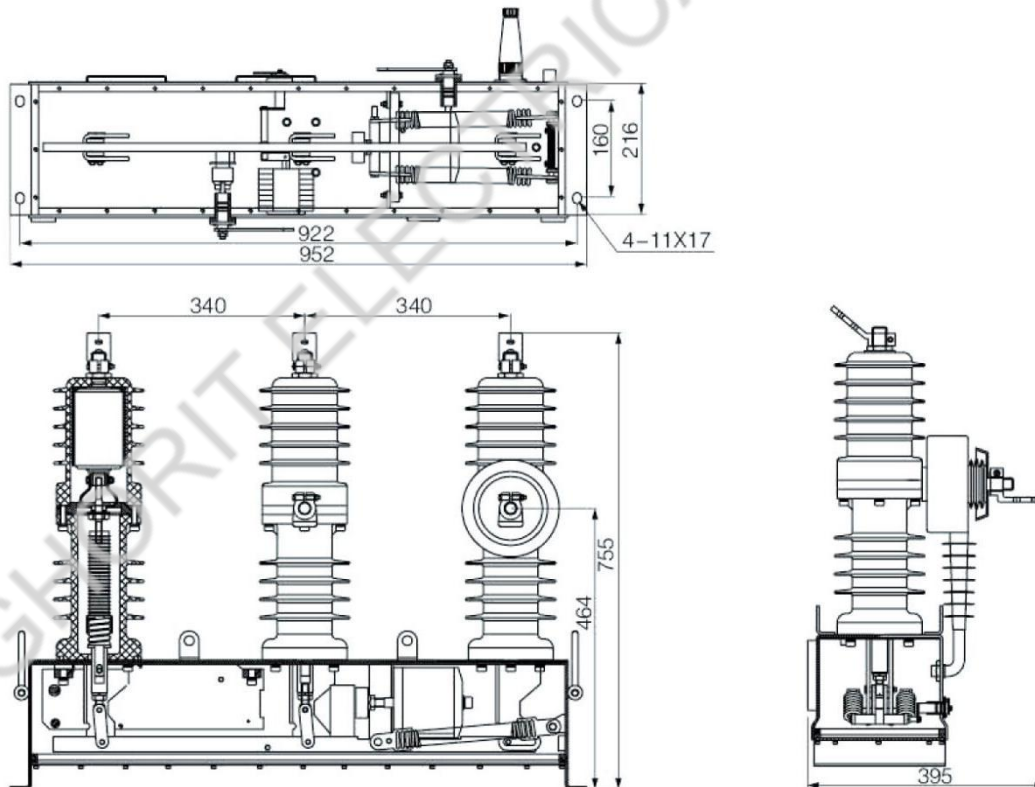
◆ ZW32-12



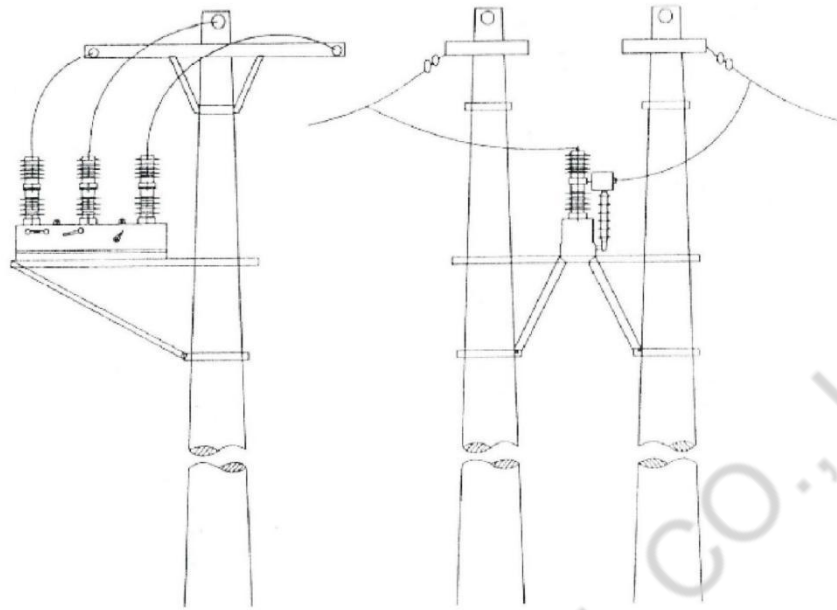
◆ ZW32-12G



◆ ZW32-12M



※ Installation ways



Single pole

Double pole

GHORIT ELECTRICAL CO., LTD.