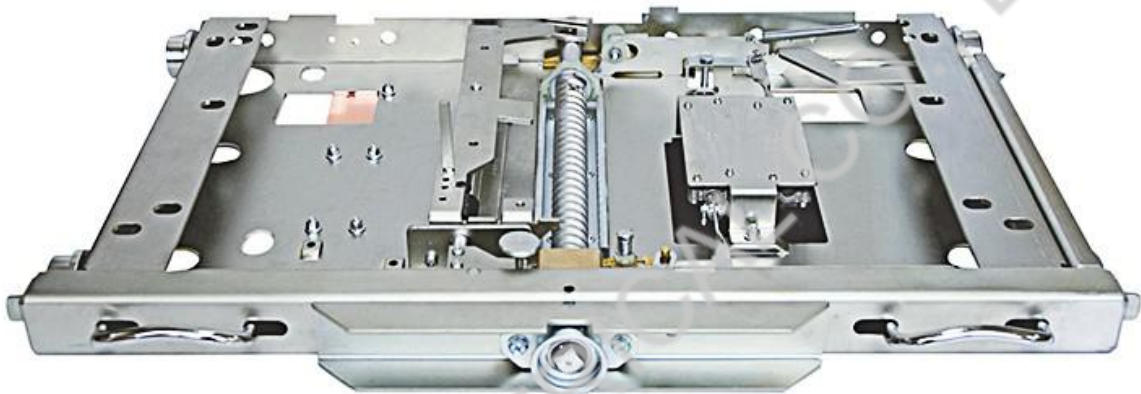


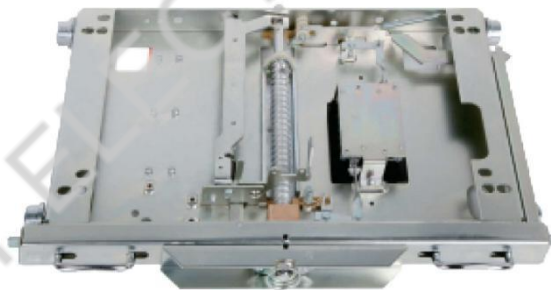
Chassis Truck



■ Usage and function

Chassis trucks are mainly used to carry components such as circuit breakers and transformers in withdrawable switchgear, and to push them in and push them out as auxiliary operations for connecting components and busbars. When the chassis truck works with the internal mechanism of the circuit breaker and other interlocks in the mid-set cabinet, it can meet the "five prevention" interlock requirements in GB3906. The specific functions are as follows:

1. The circuit breaker can only be closed when the handcart is in the test / isolating or working position. After the circuit breaker is closed, the handcart cannot be moved, thereby preventing the occurrence of misconnection and misclosing of the isolation contacts under load.
2. When the handcart is at the working position or about 10mm away from the test / isolating position, the earth switch cannot be closed to prevent the earth switch from being turned on by mistake.
3. When the earth switch is closed, the handcart cannot be moved from the test / isolating position to the working position to prevent the circuit breaker from closing when the earth switch is in the closing position.
4. After the chassis truck enters the cabinet, once it leaves the test / isolating position, the handcart cannot be withdrawn from the cabinet.



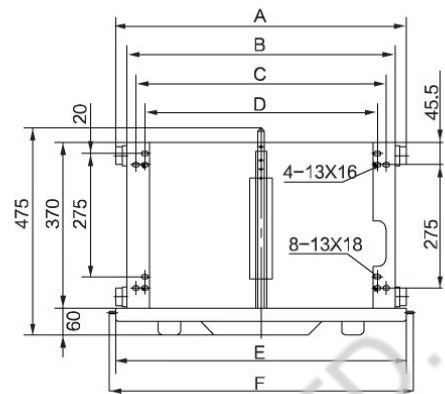
■ Type description



■ DPC-4-□ chassis truck

Code	A	B	C	D	E	F
DPC-4-650	500	450	410	385 Mounting hole 13X30	502	535
DPC-4-800	650	600	560	520	652	685
DPC-4-840	690	640	600	560	692	725
DPC-4-900	750	700	660	620	752	785
DPC-4-1000	850	800	760	720	852	885
DPC-4-1200	1050	1000	960	960	1052	1085

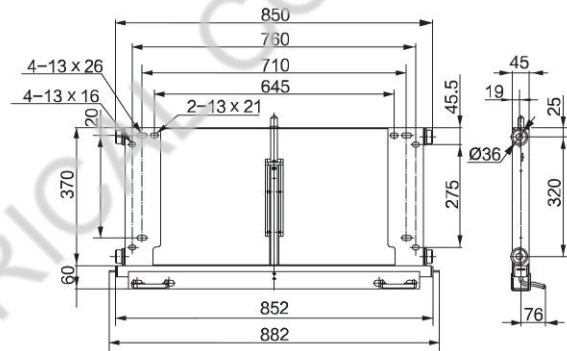
■ Note: There are 4 mounting holes in size 13×16 in DPC-4-800 Chassis Truck more than others.



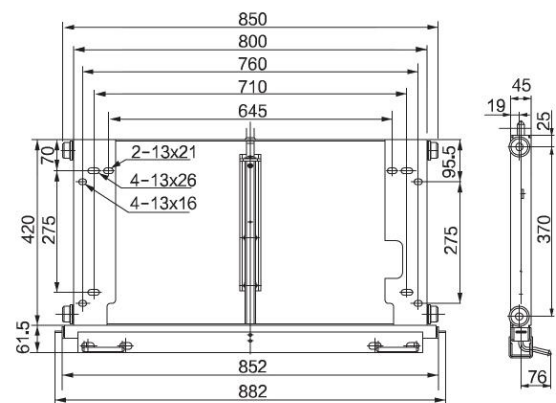
■ DPC-4-1000/T chassis truck



■ Configuration and installation dimensions for DPC-4--1000/T Chassis Truck



■ DPC-4-1000/24 deepened 24KV chassis truck



■ The deepened 24KV chassis truck has stroke of 300 with frame deepened by 50, and includes a guiding device.

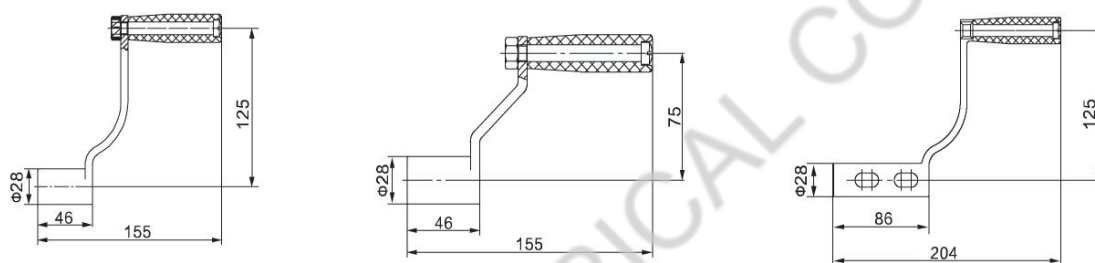
■ 24KV chassis truck not only has benefit to improve the properties of chassis truck, but also be able to stabilize the core of circuit Breaker .

Lock plate



■ 8XS.141.012
 ■ 8XS.141.012.1
 ■ 8XS.141.012.2
 ■ 8XJ.141.050.2
 ■ 8XS.141.012S(VS1+)

Handle



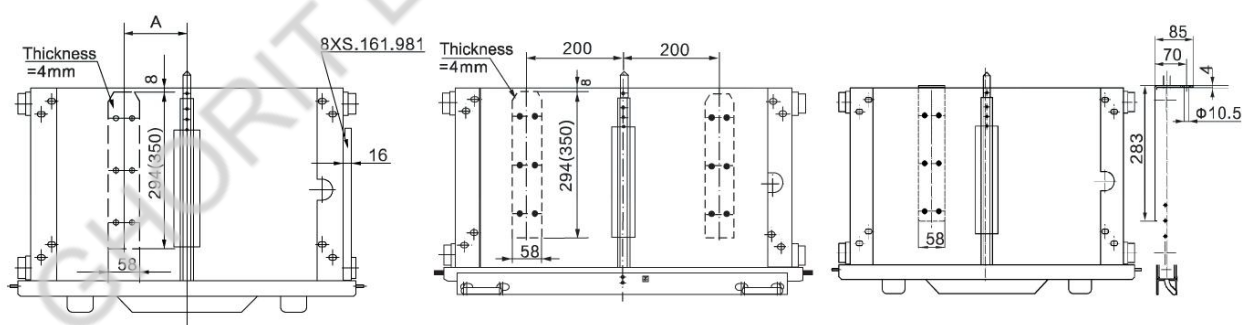
■ Normal handle: 5XS.253.013

■ Handle for lower-layer chassis truck: 5XS.253.013. 4

■ Elongated handle: 5XS.253.013. 6/WK

If you need lower-side all-direction handle, please note

Earthing bar



Code	A
DPC-□-650	100
DPC-□-800	160

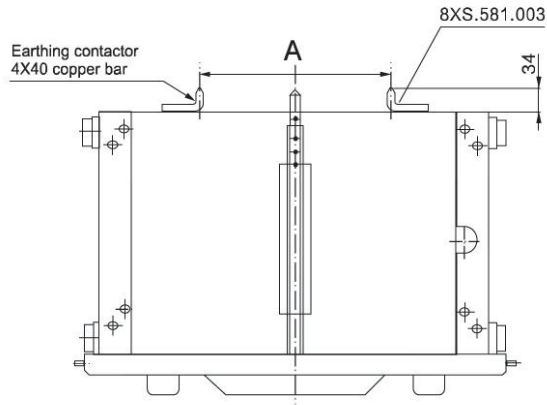
■ Note: The numbers in brackets are the dimensions of 24KV DPC-□-1000 Chassis Truck

■ 7 shape Earthing bar

■ Earthing bar DPC.8XJ.588.001.51/CZZ

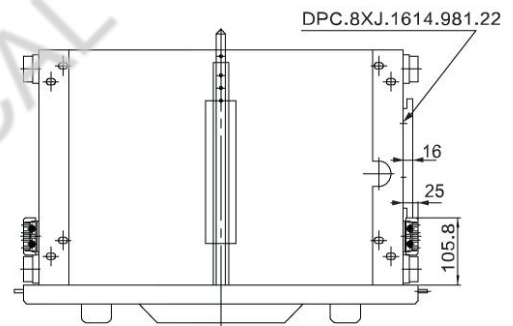
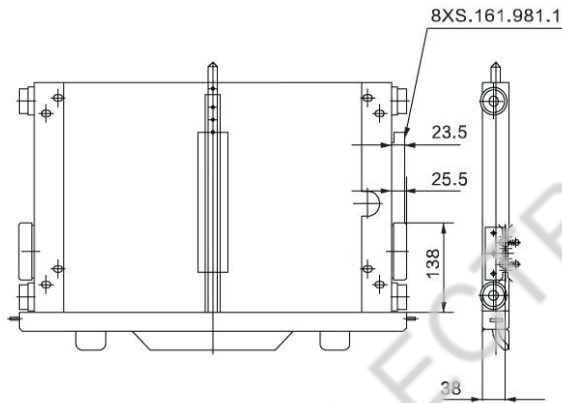
■ Please give clear indication for the earthing bar when ordering.

■ Earthing contact



Code	A
DPC-□-650	180
DPC-□-800	296
DPC-□-1000	496

■ Earthing clamp



■ Earthing clamp installation diagram

■ Note: In a interlock system, the value of guide rail would fluctuate according to earthing clamp matched with copper guide rail or aluminum guide rail.

■ Smaller earthing clamp



JX(VEP Earthing clamp)

■ DPC.5XJ.577.005



J(VD4 Earthing clamp)

■ 5WXJ.577.001



JD(Short time withstand current grounding clamp)

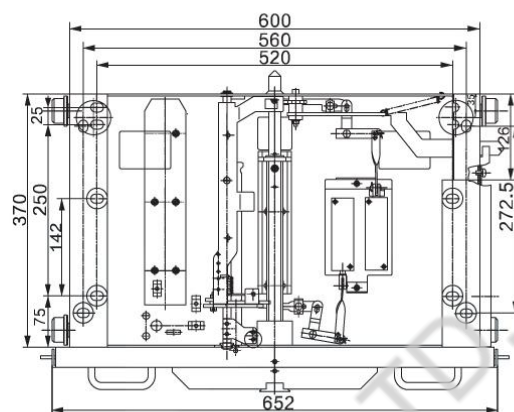
■ DPC.5XJ.577.001.10/JD



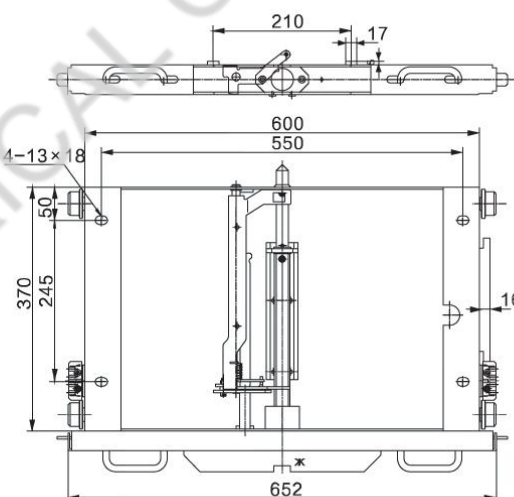
J/24(VD4 Earthing clamp 24kV)

■ DPC.5XJ.577.001.3

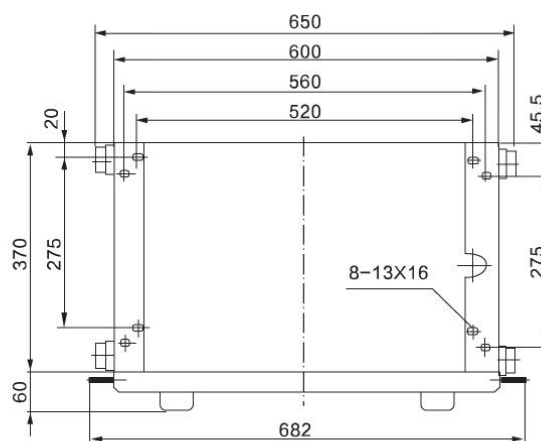
■ DPC-4-800/VD4



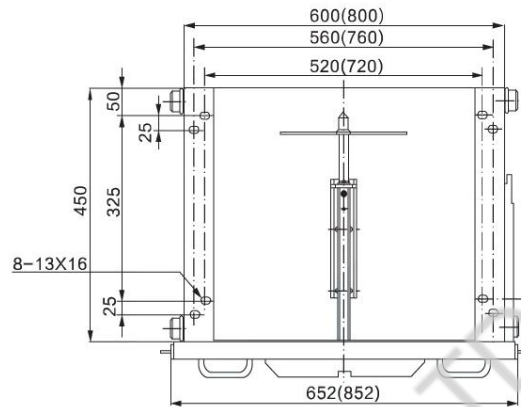
■ DPC-4-800/VEP



■ DPC-4-800/XC2 (for lower layer)

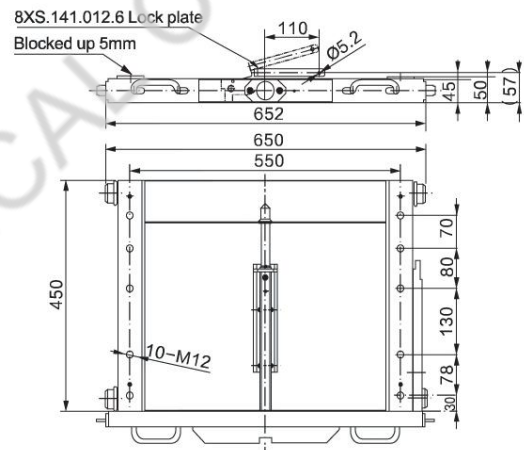


■ DPC-4-⁸⁰⁰/₁₀₀₀/YDF deepened

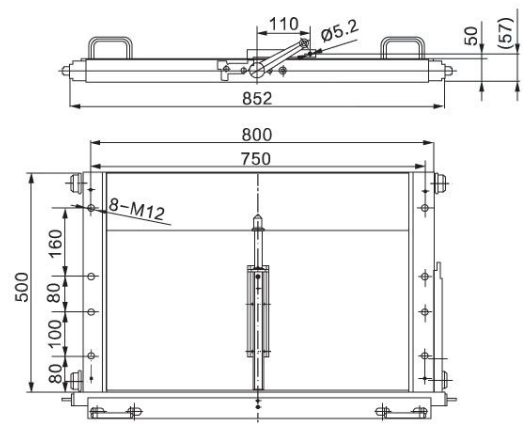


■ Note: The numbers in brackets are the dimensions of 1000 mm Width Chassis Truck.

■ DPC-4-800/YH3 deepened



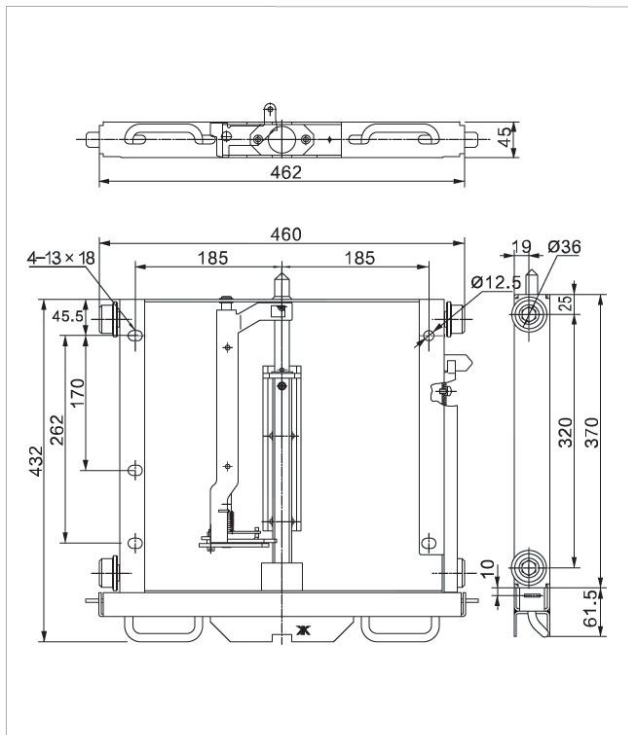
■ DPC-4-1000/YH3



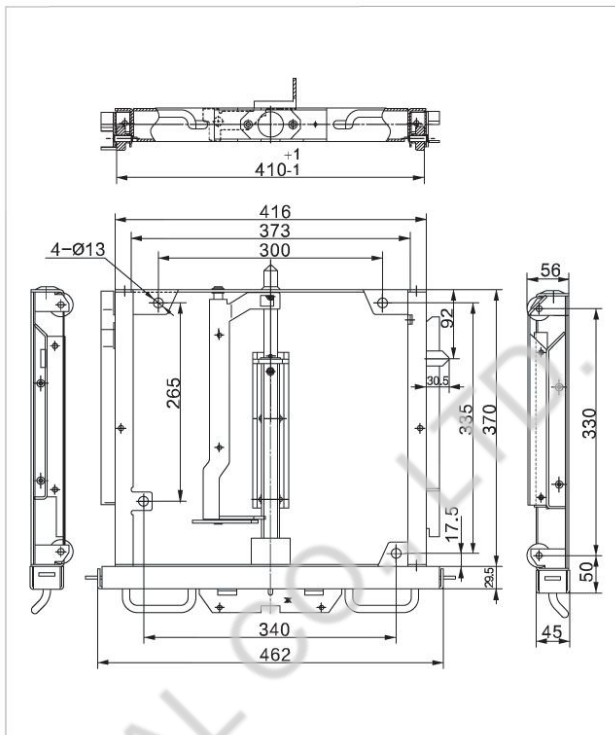
■ Note:

- 1.The deepened Chassis can be used for 3AH; ZN12; ZN28; ZN65 etc, fixed circuit breaker modified to draw out.
- 2.DPC -4- MYH3 with 8XS. 141.012.6 lock plate, Please note when ordering if you need other lock plate.

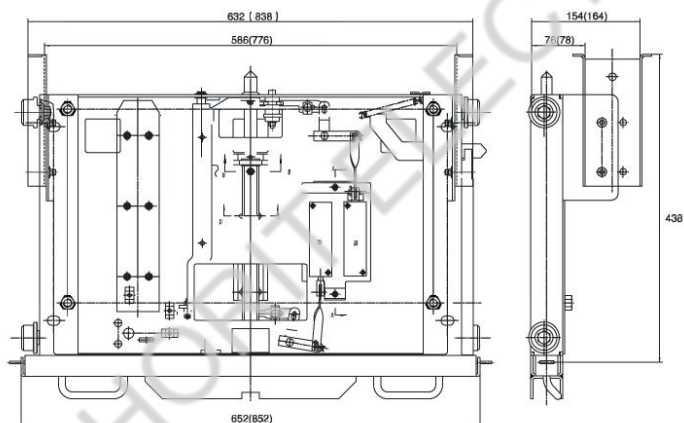
■ 550 mid-set chassis truck



■ DPC-max-550 (V-max chassis truck)



■ DPC-4-⁸⁰⁰/₁₀₀₀/JY inspection truck



■ DPC chassis truck cabinet door interlock function

- a. DPC-□-□/G5 chassis truck, this type of chassis truck only adds the door-closing interlock function, that is, when the cabinet door is opened, the handle cannot be inserted to shake the chassis truck, and the handle can only be inserted after the door is closed. The interlock function does not need to change the cabinet door.
- b. DPC-□-□/S5 chassis truck, this type of chassis truck adds the lock door interlock function on the basis of item a. That is, when the handcart leaves the test position, the cabinet door is locked and cannot be opened. The cabinet door can only be opened when it is retracted to the test position. The interlocking function needs to change the cabinet door.

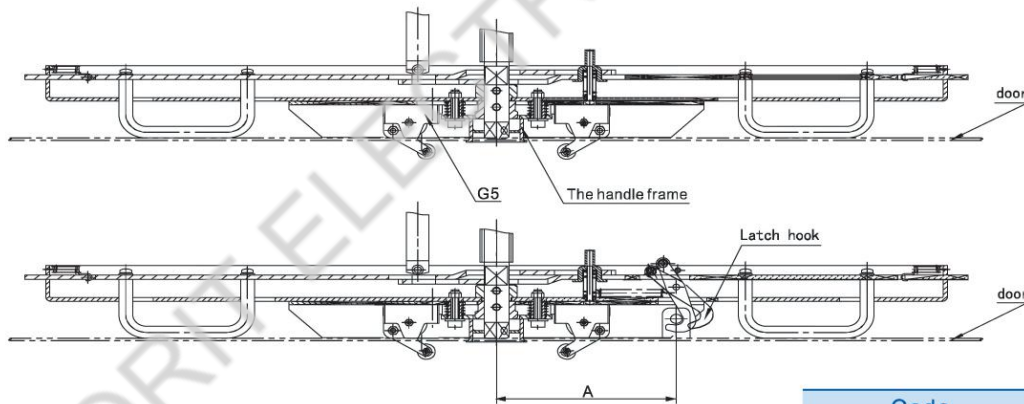
Note: The door-closing interlock structure is basically the same as the original /S, and the appearance is not much different. The modular structure is adopted for easy installation and replacement.



DPC-4-800/S5 Chassis truck (Modular patented product)

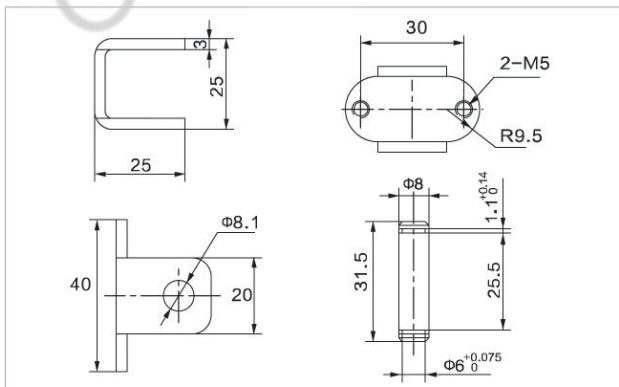


Motor of interlocking S5

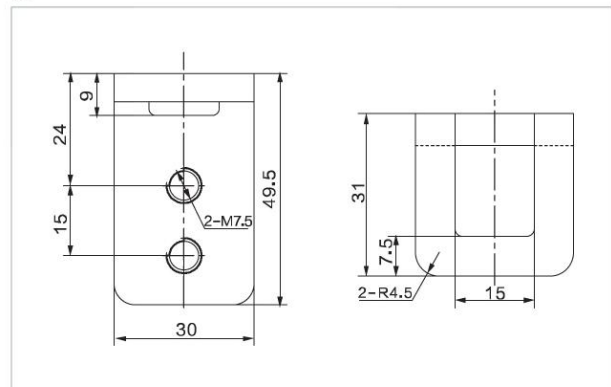


Code	A
DPC-□-650/S5	101
DPC-□-800(1000)/S5	130

A :



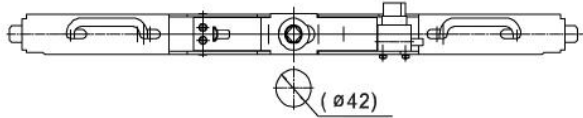
B :



■ DPC-□-□/2J1 chassis truck with special interlock device

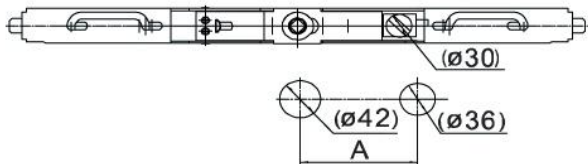
Method one: Vertical installation

Users don't need to open a hole on the cabinet, but need to make the door open.



Method two: horizontal installation

Users need to make the door open, but don't need to open a hole on the cabinet.



Two Chassis Trucks with interlock function



The lock position



Key

The unlocking position

Overview: This interlocking device is mainly used to prevent two handcarts from entering the working position at the same time.

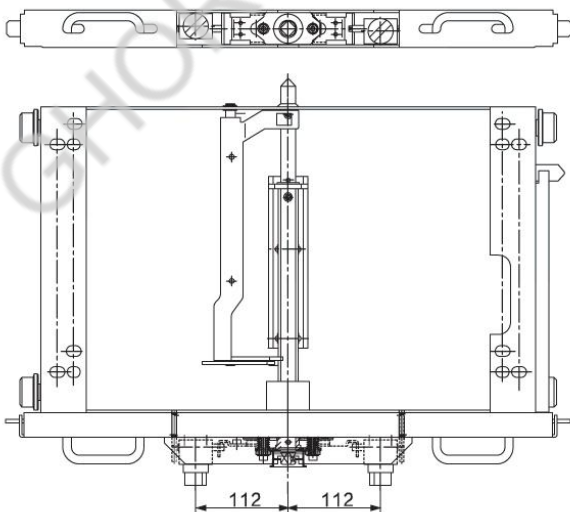
The main interlocking function is: two chassis trucks are controlled by one key. When any one of the chassis trucks is in the working position, the key cannot be dialed out, and the other chassis truck has no key to unlock, the handle cannot be inserted, and the chassis truck cannot shake, to prevent it from entering the working position.

When ordering:

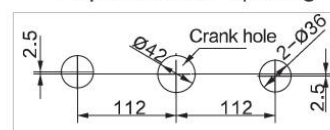
1. If need this interlocking device, add /2J1 to the model number, a set contains 2 chassis truck and 1 key.
2. please indicate the program lock will be installed vertically or horizontally.

Code	A
DPC-□-650/2J1	91
DPC-□-800(1000)/2J1	121

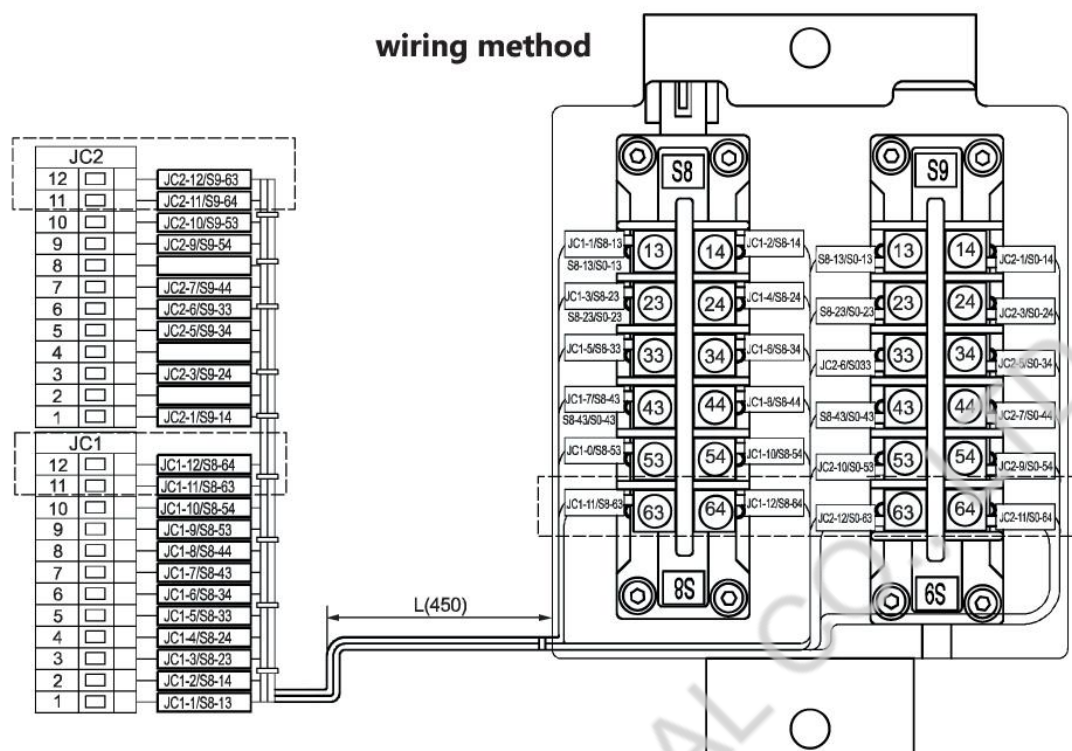
■ DPC-4-800/SHS/1J1 chassis truck with double program interlock



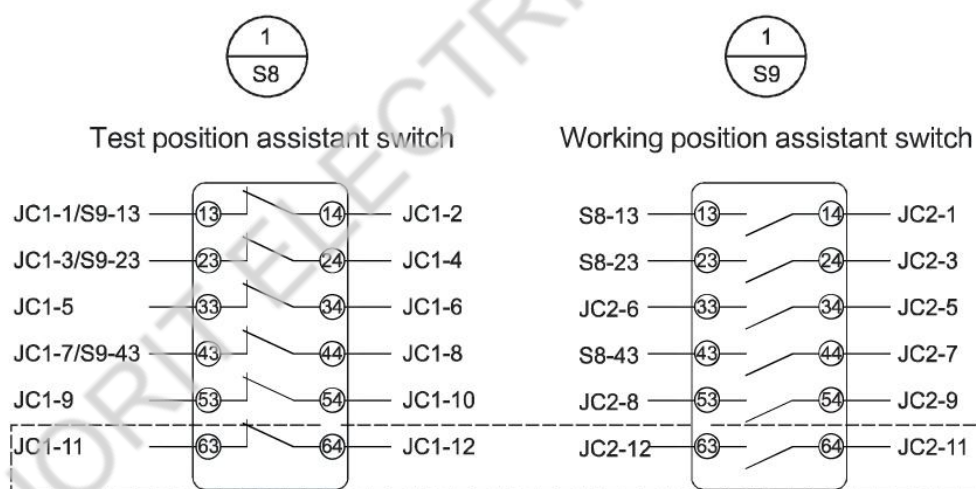
Cupboard door opening



■ Chassis truck wiring



SCH



Overview:

1. The chassis truck is in the test position, S8/S9 can be based on customer requirements;
2. The wiring terminal is selected by the customer or provided by the customer;
3. The wiring identification can be adjusted by the customer;
4. This picture shows our company's standard wiring. Customers can communicate with us if have other requirements.

Regular assistant switch S8/S9	JC1/JC2	Cable marker	Length(mm) standard length450
5050	20P(1-10)Dotted position no connection	According to customer require	More than 200, as require.
6060	24P(1-12)Dotted position connect	According to customer require	More than 200, as require.

Terminal strip chose JC (socket and plug)	Terminal strip chose JX	Assistant switchS8/S9	Terminal strip select JC or JZ
YC101-5.08-10P (Often gauge)	3DZ.01.00.010(20P)	5050 or 6060	Wiring according to customer require.
YC101-5.08-12P (Often gauge)	3DZ.01.00.010(24P)	6060	

■ Auxiliary switch



FK10-I-60
Auxiliary switch

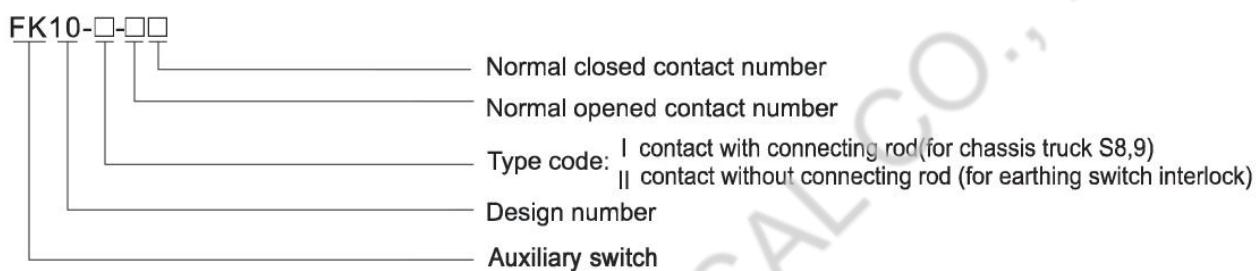


FK10-II-60
Auxiliary switch

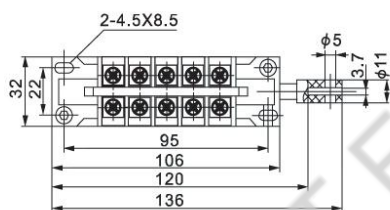


FK10C-I-60
Auxiliary switch

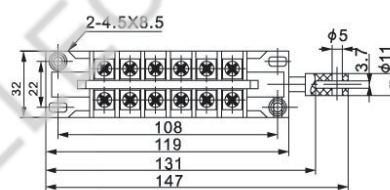
■ Type description



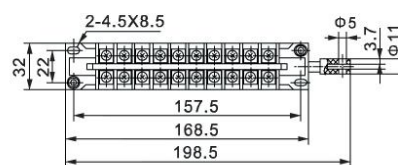
■ FK10-I-□□



5 groups contact

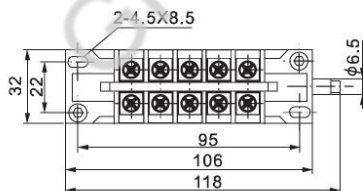


6 groups contact

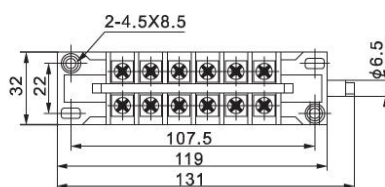


10 groups contact

■ FK10-II-□□

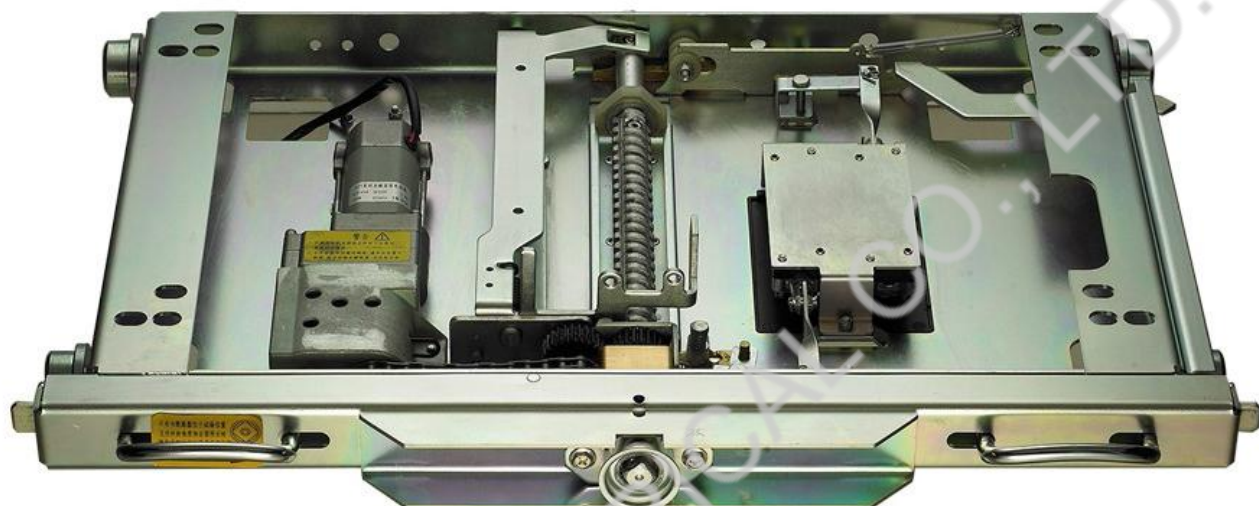


5 groups contact



6 groups contact

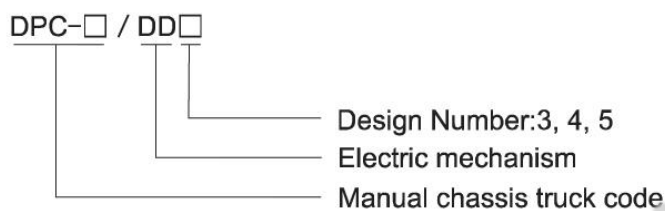
Electric Chassis Truck



■ Overview

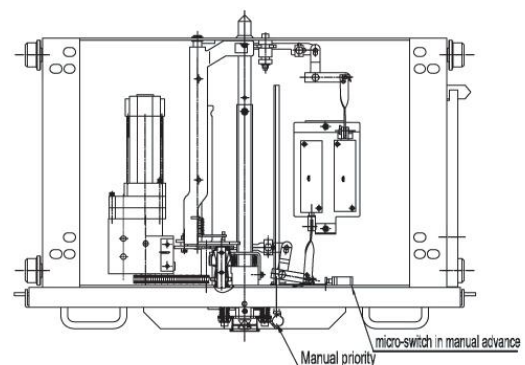
The electric chassis truck adds electric operation function to the original manual operation chassis truck. The overall size is the same as the original standard manual chassis truck. It provides the necessary hardware foundation for realizing the requirements of intelligent, programmed, remote control of the switch cabinet. After years of improvement and innovation, electric chassis trucks have developed from the 1st generation heightened type to the current 3rd generation integrated type. Starting from 3rd generation, professionally designed miniature permanent magnet DC motors have been adopted to make full use of the excess space of the original chassis. After installation, will not change the height, external installation dimensions, interlocking function, etc. of the original manually operated chassis truck, with simple structure and strong versatility.

■ Type description



■ Electric chassis truck (manual priority) S

The electric chassis truck (manual priority) is to add the manual priority function based on the original electric chassis truck. The chassis truck adds a microswitch, which is associated with the crank handle operation hole. When the chassis truck has a manual priority function, plug in the crank handle, and the controller buttons will not be able to be operated (see the module control circuit for details). When additional installation is required, add S to the original electric chassis truck DPC-□/DD3, as DPC-□/DD3S.

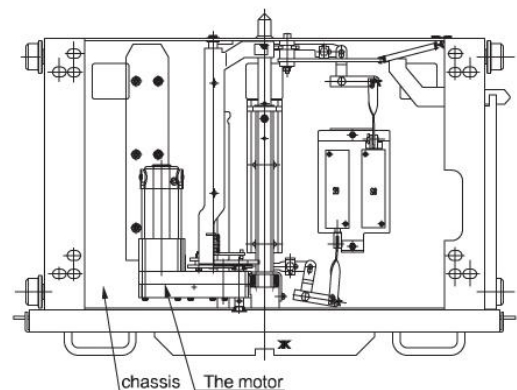


■ Electric chassis truck (gear type, patented product) DPC-□-□/DD5

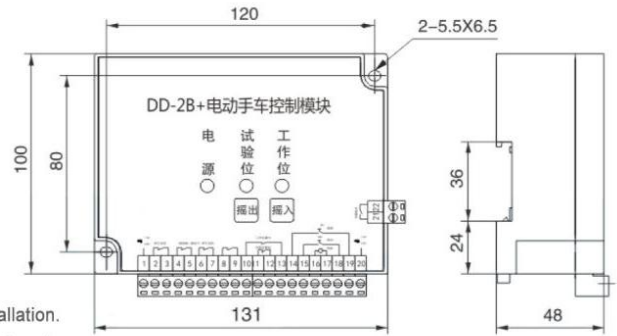
This chassis truck is a new type of electric chassis truck with a gear transmission structure and a motor-integrated design. The chassis truck with a simple and beautiful appearance; the transmission box structure is reduced, and the space of the electric part is smaller; it is more conducive to quality control, integrated and single-component control of the motor.

Structural advantages:

1. Electric and manual switching of clutch tripping is easier;
2. The overall dimensions of the chassis truck are the same as the manual chassis truck, no need to modify the frame.

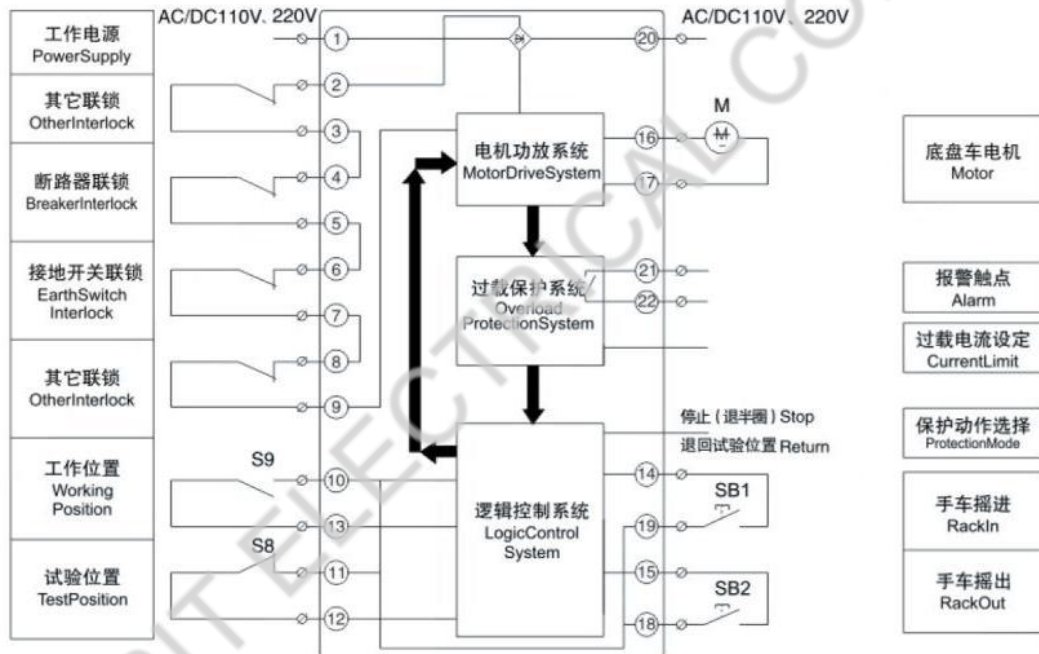


■ Control module DD-2B+

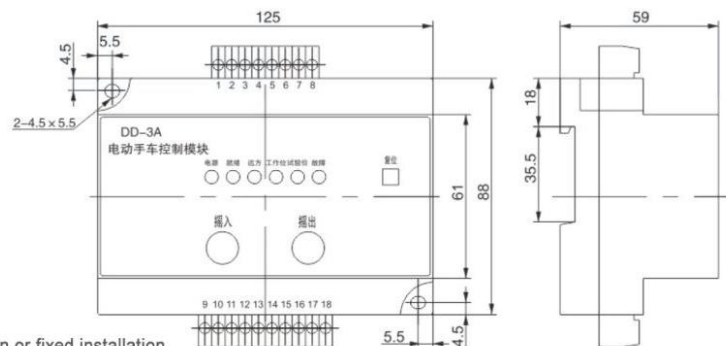


- Installation method: inside the cabinet, DIN35mm rail installation or fixed installation.
- DD-2B+ is an upgraded and improved version of the earliest product, the interface is the same as DD-1, DD-2A, DD-2B, and other earlier products. Adopt soft start, high cost performance.

■ Wiring schematic diagram DD-2B+

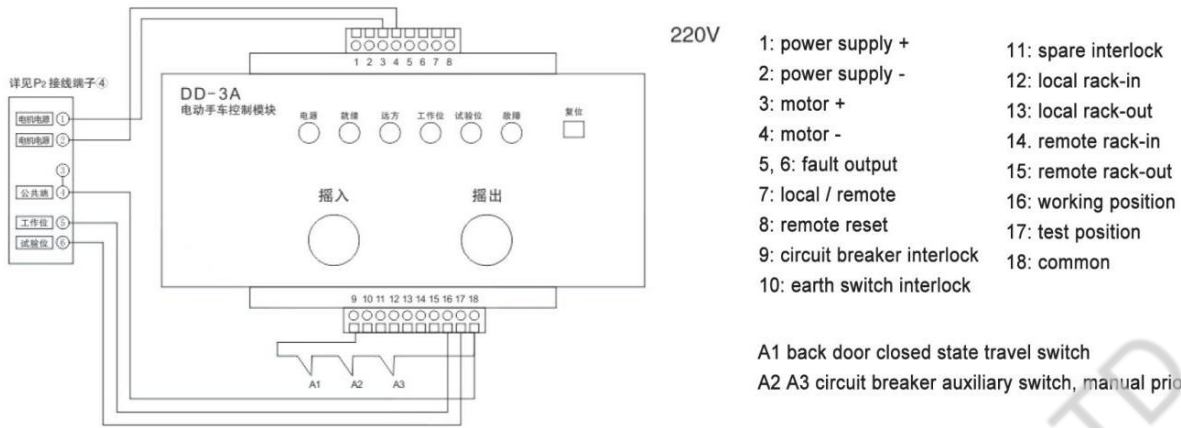


■ Control module DD-3A

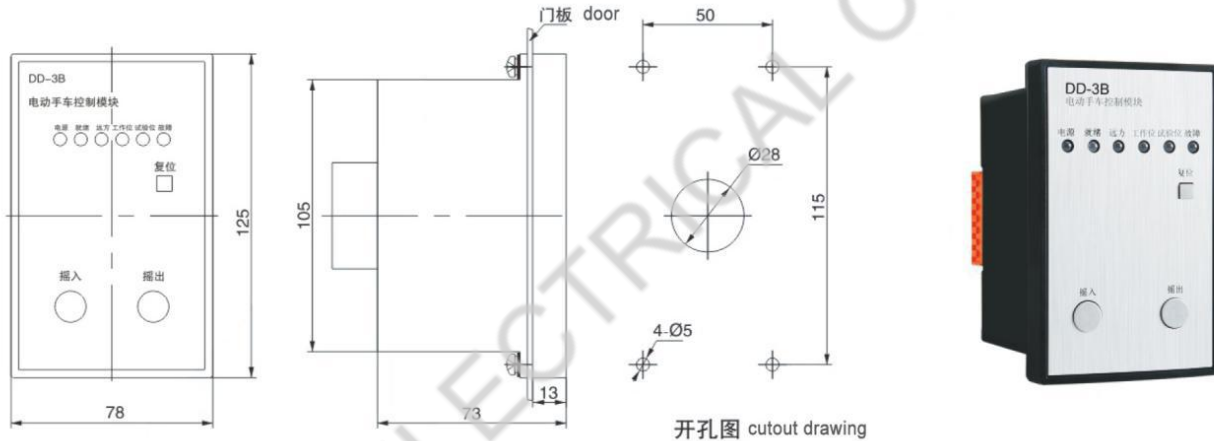


- Installation method: inside the cabinet, DIN35mm rail installation or fixed installation.
- Note: It can be equipped with a communication interface, please specify when ordering.

■ Wiring schematic diagram DD-3A

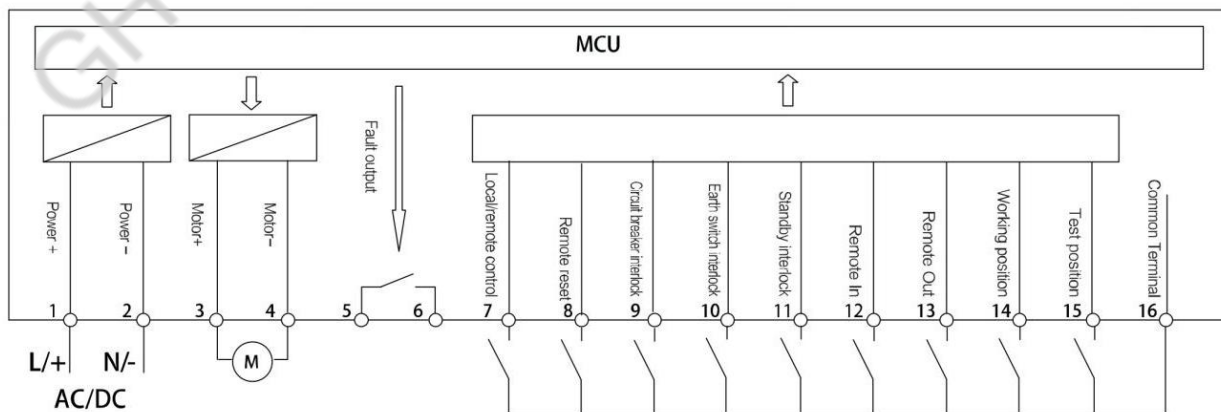


■ Control module DD- 3B

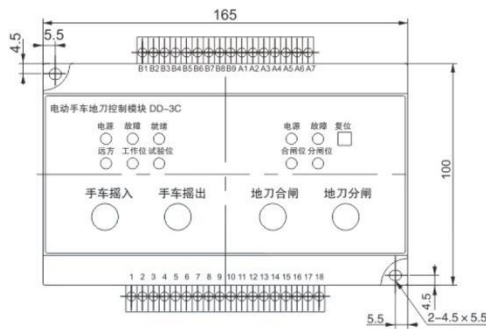


- Installation method: cabinet door fixed installation.
- Note: It can be equipped with a communication interface, please specify when ordering.

■ Wiring schematic diagram DD-3A and DD-3B

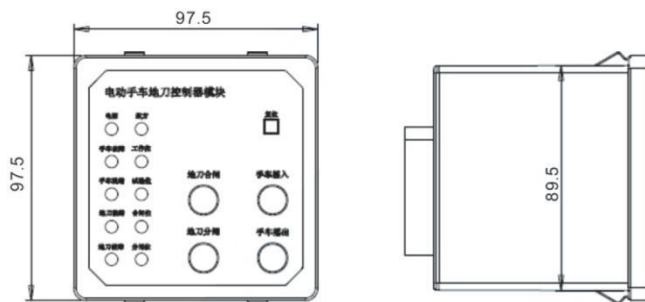


Control module DD- 3C-V

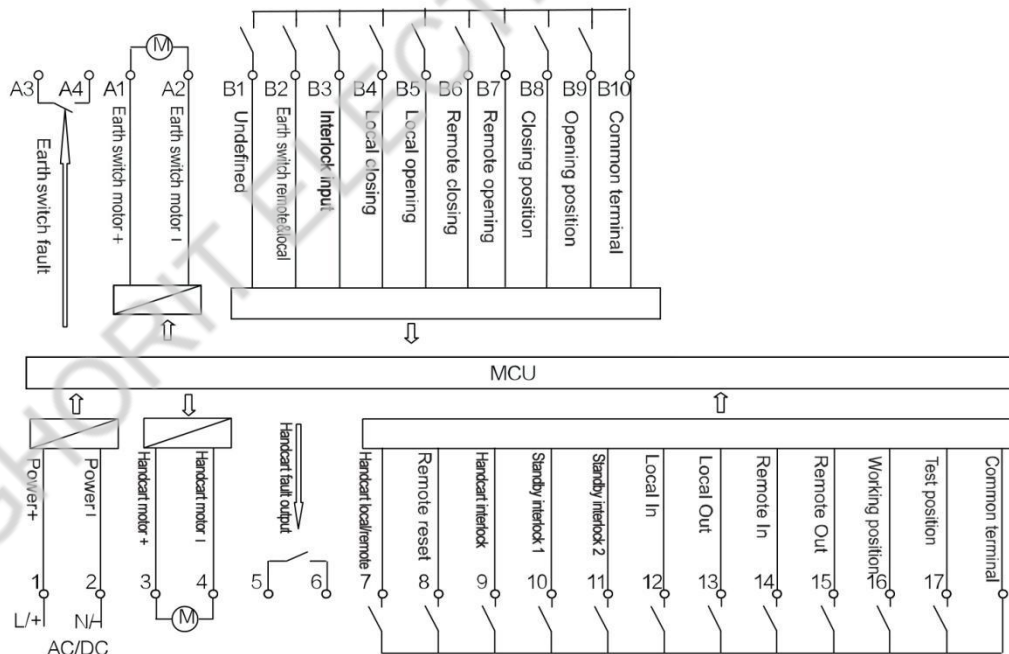


- Installation method: inside the cabinet, DIN35mm rail installation or fixed installation.
- Note: It can be equipped with a communication interface, please specify when ordering.

Control module DD- 3D-V



Wiring schematic diagram DD-3C and DD-3D



When operating the handcart, it is necessary to meet the circuit breaker interlocking conditions and the standby interlocking conditions, and the earth switch must be in the opening position; when operating the earth switch, the interlock signal input conditions must be met, and the spare interlocking conditions of the handcart part must be met at the same time. In addition: Local / remote, remote reset input are also applicable to the earth switch part.