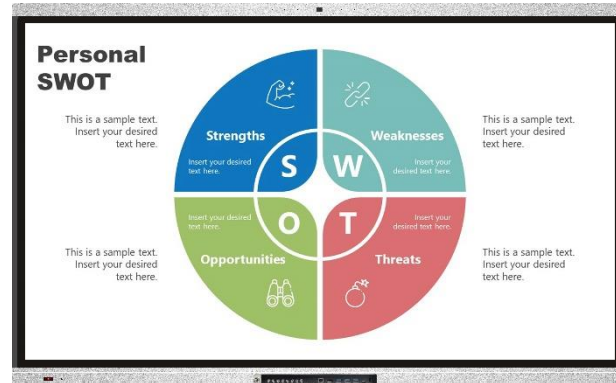


LED Interactive Touch Screen

Zero Bonding Technology



Specifications

Item Name	LED Interactive Touch Screen			
Brand Name	SmarTech			
Panel	LED Panel Size	65"	75"	85"
	Screen Type	Zero Bonding Technology LED Screen with backlight Type D-LED		
	Resolution	3840(H)×2160(V) (UHD)		
	Color	10 bit 1.07B		
	Active Size	1428.48*803.52mm	1649.66*927.93mm	1895.04*1065.96 mm
	Dot Pitch(H*W)	0.372*0.372	0.4296*0.4296	0.4935*0.4935
	Brightness	400cd/m2	450cd/m2	450cd/m2
	Contrast	4000:1 (according to panel brand)		
	Viewing Angle	178°		
	Display Protection	Tempered explosion-proof glass 4 mm		
	Backlight Lifetime	50,000 hours		
	Camera & Mic	13Mega pixel with 8 array Microphone		
Electrical performance	Max Power	≤400W		
	Standby Power	≤0.5W		
	Voltage	110-240V(AC) 50/60Hz		
Operating System (Dual OS available)	Android System	Android 13.0		
		CPU: Quad-Core A55 1.9GHz; GPU: Mali-G52 MP2		
		RAM 8GB ; ROM 128G		
	Support OPS PC	Slot available to Support all types of OPS PC		
Touch	Touch Technology	IR touch; 50 points in windows,20 points in android; HIB Free drive		
	Response Speed	≤ 7ms		
	Operation System	Support Windows7/10/11, Android, Mac OS, Linux		
Speakers	Power	15W*2 / 8Ω		
Ports	Input Ports	AV*2, HDMI*1, LAN(RJ45)*1, RS232, USB3.0*1, USB2.0*1, Touch USB*1		

	Output Ports	AV*1, SPDIF*1, Earphone*1
	Front Ports	USB*3, Touch USB*1, HDMI in*1, type C*1
Working Environment	Working temperature	0°C-40°C
	Storage temperature	- 20°C~60°C
	Working humidity	10%-90% non-condensing
Language	Default language English; Optional language Nepali and other languages	
Other Functions	Sliding lockable design protects front function buttons and ports	
	Support automatic identification of signal sources and switching channels	
	Support QR code sharing	
	Support automatic identification and classification of U disk content	
	Support screen-split for showing two application same time	
	Air Vote and fast file transform from mobile device to touch screen	
	Wireless projection app activated support 4 split screens, projection screen supports counterattack control	
	Licensed software for windows system include teaching resource, data analysis chart and mind map	
	Grid for writing and pronouncing in typing words for learning	
	Periodic table of chemical elements with pronunciation for learning	
Insert videos and documents into android whiteboard software		
Warranty	2years standard warranty and 1-year additional warranty (36 months from date of installation)	
Accessories	Power cable*1 pcs; Touch Pen*1 pcs; QC card*1 pcs; Instruction manual*1 pcs ; Warranty card*1 pcs; Wall brackets*1 set; Remote Controller*1 pcs	

Items / Model No.	SM-65LED	SM-75LED	SM-85LED
Product dimension	1485*893*95mm	1707*1017*95mm	1953*1168*95mm
Packing dimension	1600*1014*200mm	1822*110*200mm	2068*1370*200mm
Weight	41kg/52kg	51 kg/64 kg	64 kg/75 kg

OPS (Optional Extra Cost)

OPS PC	I5 8 th Generation to I7 11 th generation
	Storage: 4G+128 GB to 8G + 256GB
	Intel integrated HD graphics
	WIFI: 802.11b/g/n
	Windows: Pre-install Win 10 Pro/Win 11