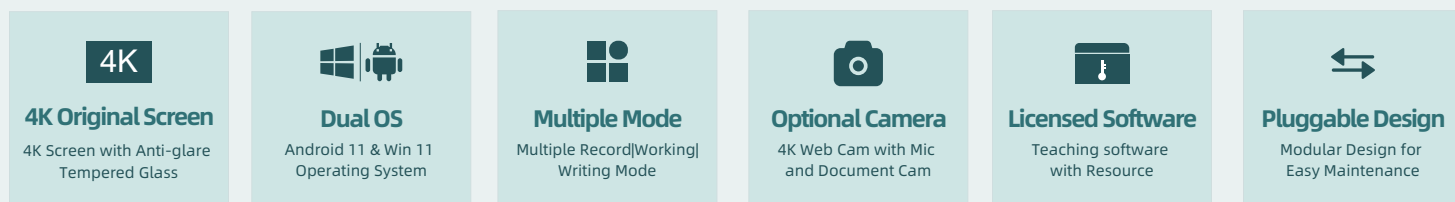
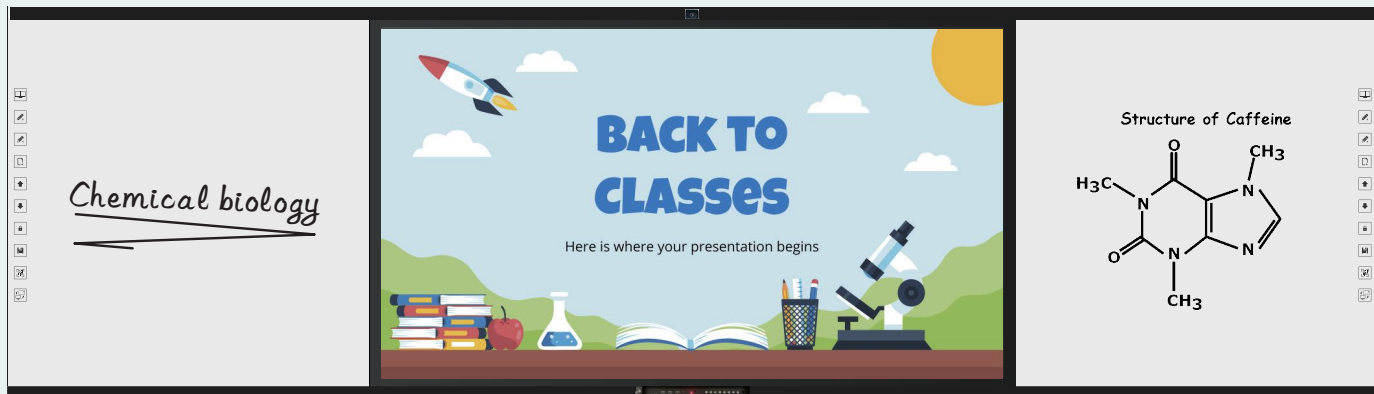


LED Recordable Smart Blackboard

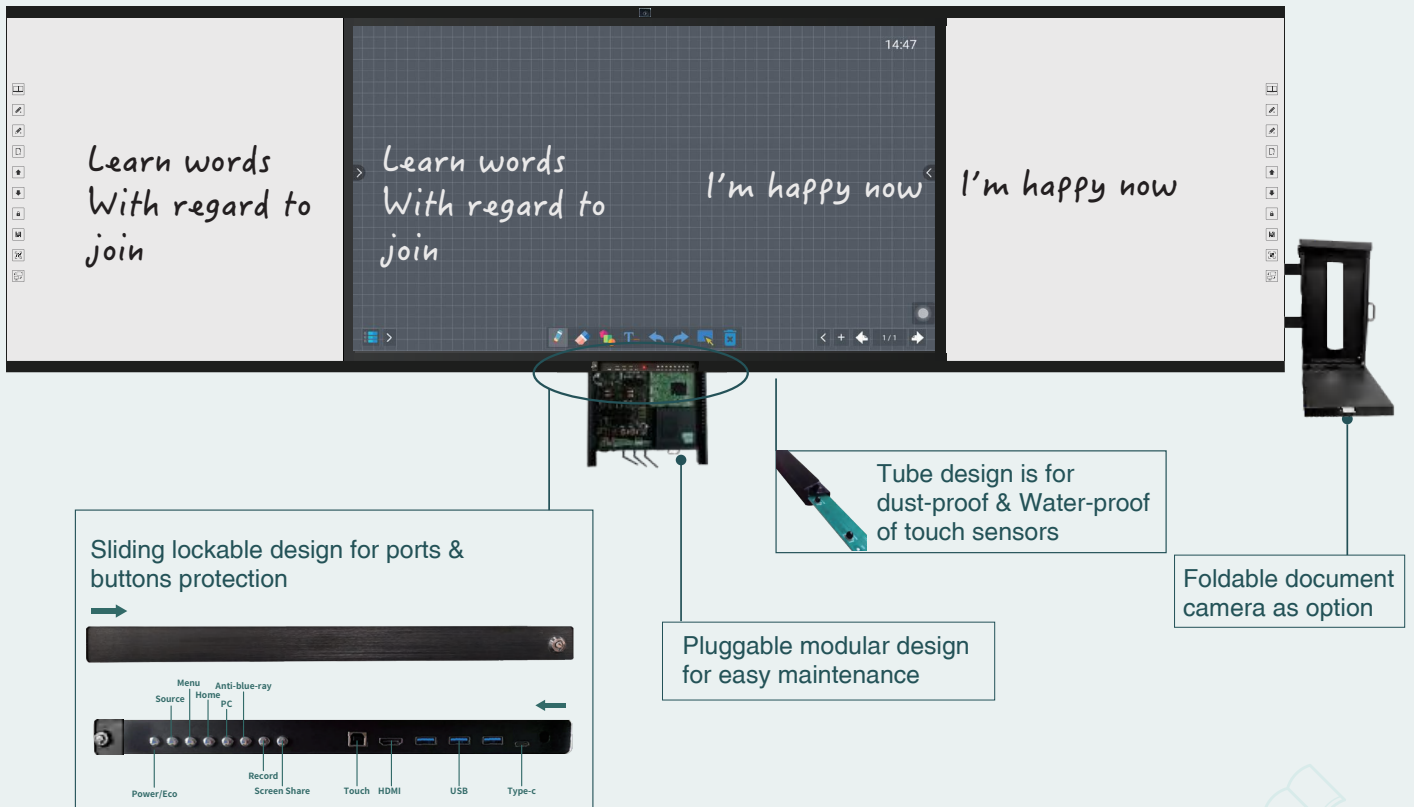
Latest Generation of Digital Classroom Solution



Detail Specifications

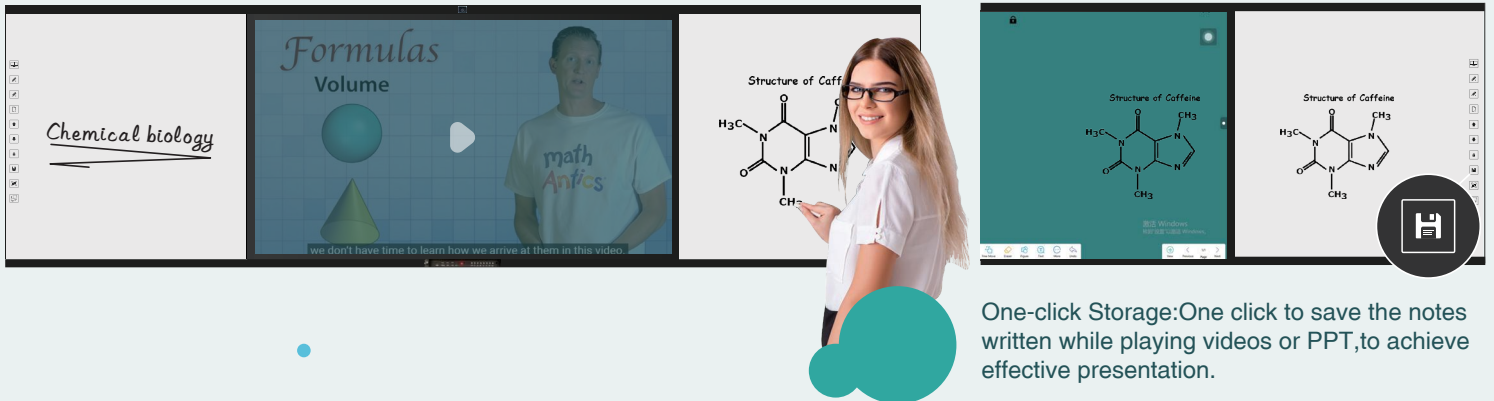
Item	Model No.	FC-146EB	FC-162EB	FC-185EB
Dimension	Size	146 inch	162 inch	185 inch
	Dimension(L*D*H)	3573* 143*1044 mm	3953* 143*1183 mm	4504*161*1336mm
	Sub-screen (L*D*H)	933* 61.5*1044mm *2pcs	1000* 61.5*1183mm *2pcs	1143*61.5*1336mm *2pcs
	Packing Size(L*H*D)	1845*1190*200 mm*1 ctn 1030 * 190 *1140 mm*1 ctn	2110*1375*200mm*1 ctn 1097*190*1280mm*1 ctn	2410*350*1660mm*1 ctn 1240*190*1433mm*1 ctn
	Weight (N.W. /G.W.)	82KG/ 95KG	105KG/118KG	130KG/152KG
Electricity Performance	Voltage	110-240V(AC) 50/60Hz		
	Power Consumption	≤ 300W(without OPS)	≤ 400W(without OPS)	≤ 450W(without OPS)
Display Specification	Main Screen Size (H*V)	1649.66* 927.93mm	1872* 1053mm	2158.85*1214.35mm
	LCD Main Screen Size	75inch	85inch	98inch
	Resolution	3840*2160 (UHD) , 4K/60GHZ		
	Ratio	16:9		
	Contrast	4000:1		
Brightness	400cd/m ²			
System Specification	System	Android 11.0 embedded system		
	Processor	Cortex A55*4, 1.5GHz		
	Storage	RAM 4G, ROM 32G		
	OPS for Windows	Intel i3/i5/i7, RAM 4G/8G/16G/32G, Storage 128G/256G/512G/1T, Pre-install Windows 10/11 Pro as option		
Accessories	Power cable*1, Touch pen*1 , Remote controller*1 , Instruction manual*1 , Marker *1, Eraser*1, Wall brackets*1 set			

Appearance and Structure



Additional Functions Compared with Ordinary Smart/Interconnection Blackboard

1st Recordable Mode -- Memory Record



2nd Recordable Mode -- Direct Mirroring

