



# LED Recordable Smart Blackboard

Latest Generation of Digital Classroom Solution

Record Handwriting

All-in-one Design

Invention Patented



EIBOARD LED Recordable Smart Whiteboard is new concept designed for smart classroom solution, which integrates traditional board, interactive board, touch flat panel and recordable solution all in one.

It enables handwriting notes to be recorded as e-content, save easily, share conveniently and make teaching more efficient.

Keeping traditional teaching and modern digital classroom solution all in one, users can write free by finger, pen, chalk and markers. With design of seamless and big flat surface, it supports multi-user to operate with multiple working modes simultaneously. It's new trends of smart classroom, widely used for K12, higher education and training institutes.

4K

4K Original Screen

4K Screen with Anti-glare Tempered Glass



Dual OS

Android 11 & Win 11 Operating System



Multiple Mode

Multiple Record|Working|Writing Mode



Optional Camera

4K Web Cam with Mic and Document Cam



Licensed Software

Teaching software with Resource



Pluggable Design

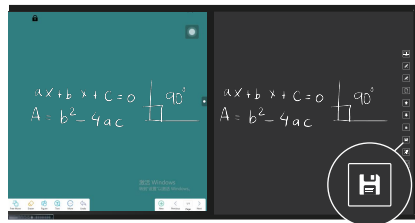
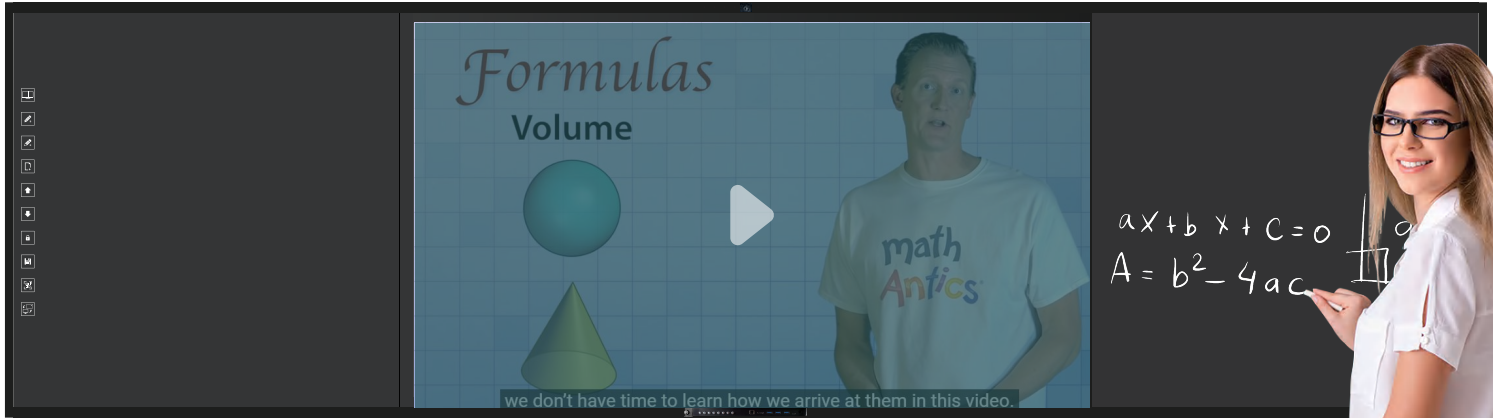
Modular Design for Easy Maintenance



# Unique Smart Recordable Features

It's not just an interactive blackboard, but also a recordable smart blackboard.

## 1<sup>st</sup> Recordable Mode -- Memory Record

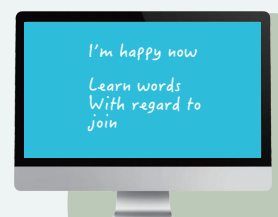
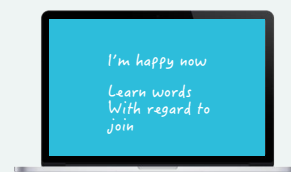
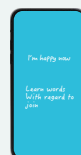


One-click Storage:  
One click to save the notes written while playing videos or PPT, to achieve effective presentation

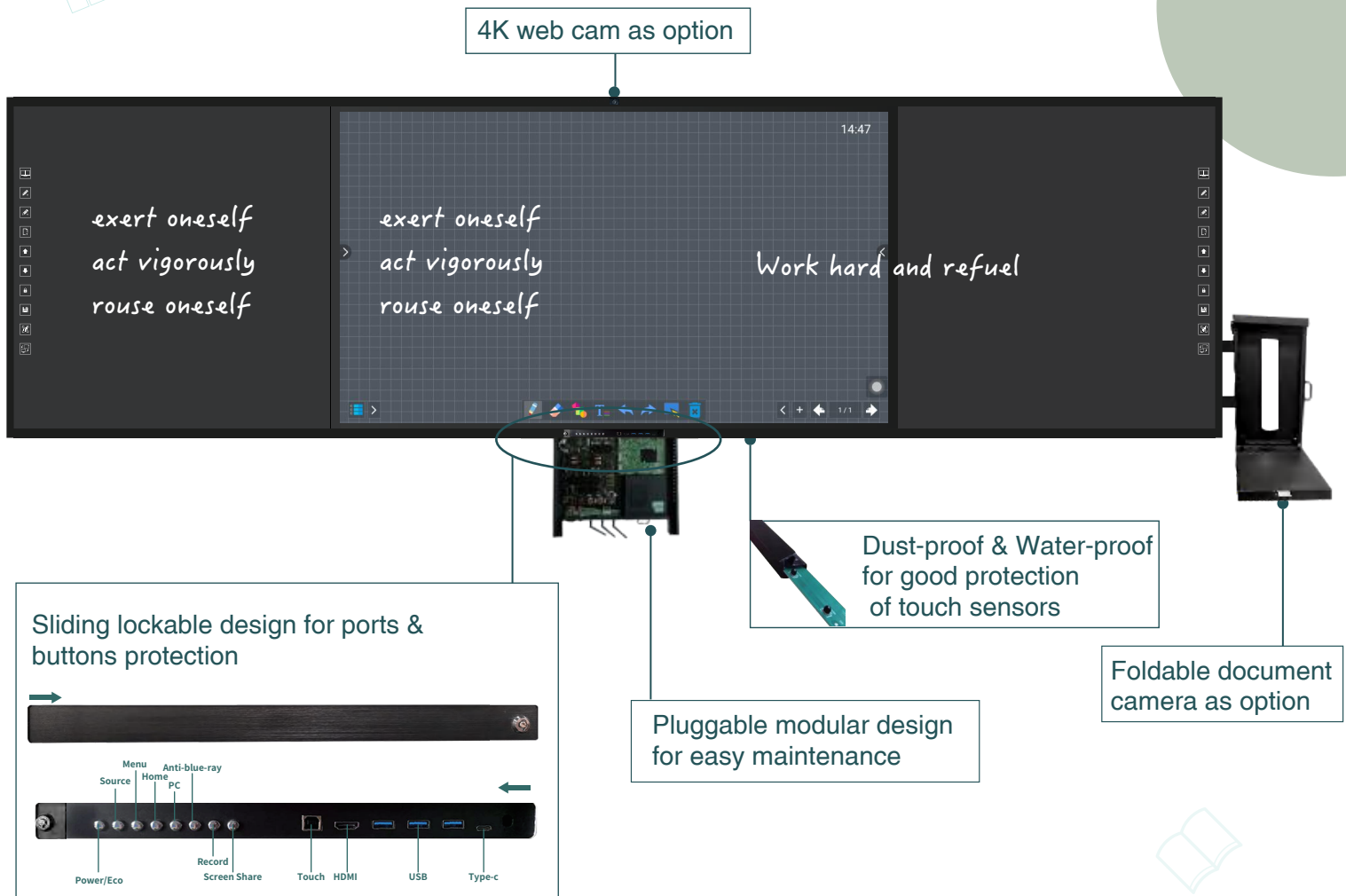
## 2<sup>nd</sup> Recordable Mode -- Direct Mirroring



Synchronous display, to catch attention and enhance class interaction.

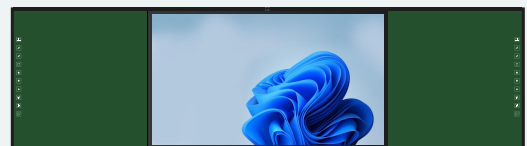
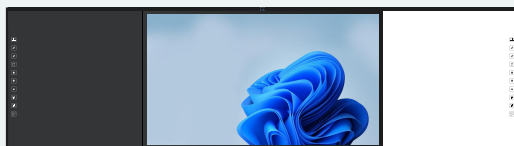
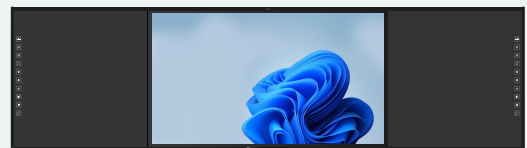
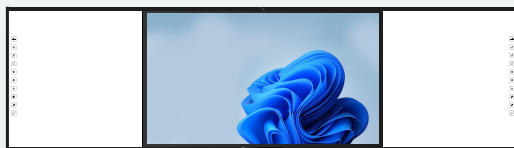


# Apperance and Structure



## Customized Option

Green board, Blackboard, White board as options to support writing freely by chalk and marker



## Detail Specifications

Item	Model No.	FC-146EB	FC-162EB	FC-185EB
Dimension	Size	146 inch	162 inch	185 inch
	Dimension(L*D*H)	3573* 143*1044 mm	3953* 143*1183 mm	4504*161*1336mm
	Sub-screen (L*D*H)	933* 61.5*1044mm *2pcs	1000* 61.5*1183mm *2pcs	1143*61.5*1336mm *2pcs
	Packing Size(L*H*D)	1845*1190*200 mm*1 ctn; 1030 * 190 *1140 mm*1 ctn	2110*1375*200mm*1 ctn; 1097*190*1280mm*1 ctn	2410*350*1660mm*1 ctn; 1240*190*1433mm*1 ctn
	Weight (N.W. /G.W.)	82KG/ 95KG	105KG/118KG	130KG/152KG
Electricity Performance	Voltage	110-240V(AC) 50/60Hz		
	Power Consumption	≤ 300W(without OPS)	≤ 400W(without OPS)	≤ 450W(without OPS)
Display Specification	Main Screen Size (H*V)	1649.66* 927.93mm	1872* 1053mm	
	LCD Main Screen Size	75inch	85inch	98inch
	Resolution	3840*2160 (UHD) , 4K/60GHZ		
	Ratio	16:9		
	Contrast	4000:1		
	Brightness	400cd/m <sup>2</sup>		
System Specification	System	Android 11.0 embedded system		
	Processor	Cortex A55*4, 1.5GHz		
	Storage	RAM 4G, ROM 32G		
	OPS for Windows	Intel i3/i5/i7, RAM 4G/8G/16G/32G, Storage 128G/256G/512G/1T, Pre-install Windows 10/11 Pro as option		
Accessories	Power cable*1; Touch pen*1 ; Remote controller*1 ; Instruction manual*1 ; Marker *1;Eraser*1; Wall brackets*1 set			

## Applications

