



流体因我而可控

BECAUSE OF US, THE FLUID BECOMES MANAGEABLE



# VALVE CATALOGUE

阀门综合样本

阀门综合样本



莱科阀门(天津)有限公司



地址: 天津市津南区小站工业园区五号路

电话: 86-22-6632 1069

传真: 86-22-6632 1069

网址: [www.likevalves.com](http://www.likevalves.com)

邮箱: [likv@likevalves.com](mailto:likv@likevalves.com)

ADD: Fifth Road of Xiaozhan Industrial Area, Jinnan District, TIANJIN, China

TEL: 86-22-6632 1069

FAX: 86-22-6632 1069

HTTP: [www.likevalves.com](http://www.likevalves.com)

E-mail: [likv@likevalves.com](mailto:likv@likevalves.com)

莱科阀门(天津)有限公司  
LIKE VALVE (TIANJIN) CO.,LTD.

## INTRODUCTION OF LIKE VALVE | 企业简介

莱科阀门（天津）有限公司位于中国北方最具经济活力的都市——天津，是集设计研发、生产制造、营销服务于一体的高端阀门系列产品制造公司。拥有独立的研发中心，采用先进制造工艺，严格执行相关国际标准；并具备先进的工程设计方式、完善的制造设备和检测验证设施，以精益生产的理念保证每一件产品的质量及性能，向客户提供安全保障。

质量的保证源于每个细节的管理，公司自创建以来，产品全部采用CAD、Solidworks 等计算机辅助设计，并率先推行先进的六西格玛管理方法，建立了一套严格的质量管理体系，不断追求产品零缺陷。

主导产品有：蝶阀、闸阀、截止阀、止回阀、球阀、水力控制阀、平衡阀等系列产品。同时还生产不同材质、压力、规格的楼宇阀门等系列产品，现有50多个系列，1200多个品种。年生产制造能力达6000吨以上。产品覆盖全国各地，并远销欧美等国家，广泛用于给排水、建筑、电力、石化、冶金等行业。产品匠心独运，质优价廉，声誉远播，颇受用户信赖。

我公司拥有精良的大、中型机加工设备178台（套）和从国外引进的检验试验设备32台（套）。产品设计新颖，结构先进，工艺精湛，制作精良，检测手段完备，并已通过ISO9001国际质量体系认证，在严格的质保体系和企业管理体系的有序控制下，企业已达到较高的设计开发、制造、检验试验水平。强大的生产能力使得“莱科企业”可以在最短的时间内为用户提供其所需的产品，并提供及时、高效的售后服务，以实现用户满意度的最大化。

莱科企业将以科技创新一流、服务一流、素质一流的精神参与到未来的创造中，用产品的质量与客户满意的满意塑造自己，用不懈的追求和持续的发展超越自己。“莱科梦”，让“中国梦”更精彩！

Like Valve (TIANJIN) Co., Ltd. locates in Tianjin—the most dynamic economy in northern China. Like valve is a high-end valve products manufacturing company which has design research and development, manufacturing, marketing services in one. We have the independent R&D center, advanced manufacturing technology and strictly implement the relevant international standards. With advanced engineering design approaches, well-developed manufacturing equipment, testing verification facilities and the concept of lean production, we? Like Valve? ensure that each part in every product we supply is in high quality and performance.

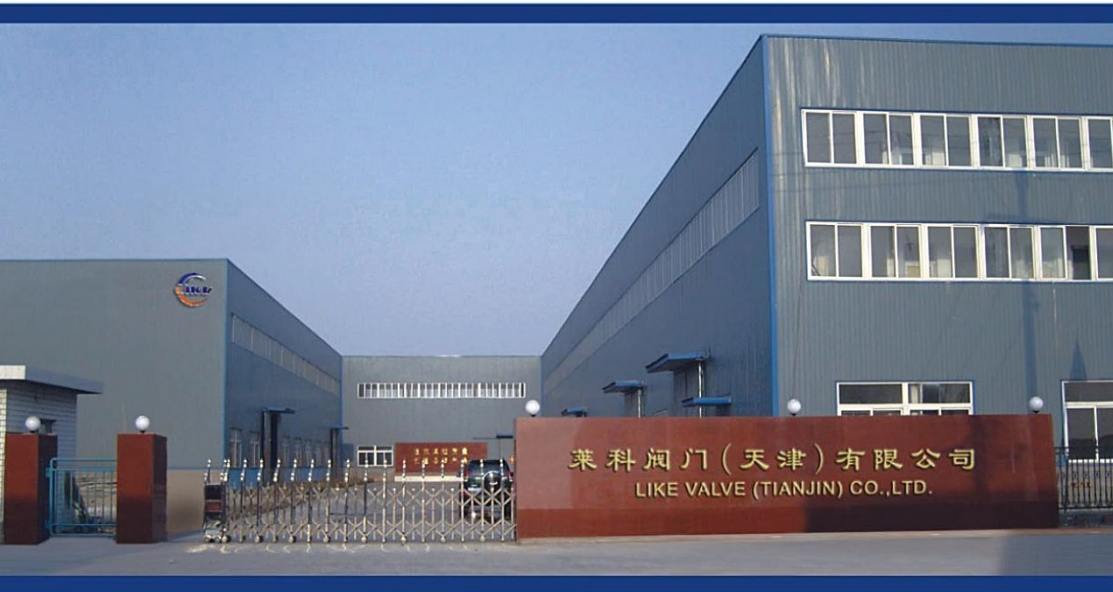
The quality assurance comes from the management of every detail. Since its established, the company has adopted computer-aided design, such as CAD and Solidworks, and the first to introduce advanced Six Sigma management. Established a set of strict quality management system, continue to pursue zero defect products. We specialize in butterfly valve, gate valve, globe valve, check valve, ball valve, Hydraulic control valve, Balance valve and other series products. It also produces building valves in different materials, pressure, size and other products, there are more than 50 series, more than 1,200 varieties.

The annual production capacity of more than 6,000 tons. Products covering all parts of the country and exported to Europe and the United States and other countries, widely used in water supply and drainage, construction, electricity, petrochemical, metallurgical and other industries. Product ingenuity, high quality and reasonable price, trusted by the user.

Like Valve has excellent large and medium-sized machine processing equipment 178 sets, 32 sets of inspection equipment imported from abroad. Product design novel, advanced structure, superb production technology, lean production, complete detection. We have passed ISO9001 international quality system certification, In the control of strict quality assurance system and the management system, we have reached a higher level of design, development, manufacturing and inspection test.

Strong production capacity makes the "Like valve" in the shortest possible time to provide the products, and provide timely and efficient after-sales service to achieve maximum customer satisfaction.

The future will be built from today, Like Valve will be to first-class scientific and technological innovation, first-class service, top quality entrepreneurial spirit to participate in the future creation. With the quality of products and customer satisfaction to shape our business our company, With unremitting pursuit and sustained development beyond ourselves. "Like dream" will make "Chinese dream" more exciting!



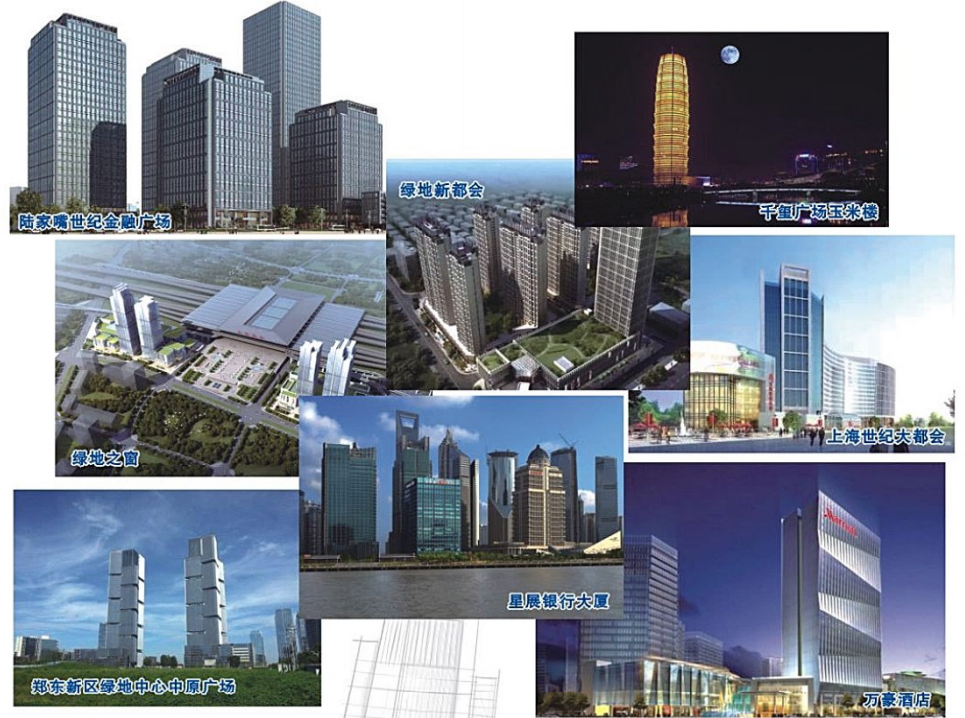
莱科阀门，为您把关！

Let Like Help you!



个案展示

阅控四海，心通你我！



我们持续的竞争力来源于为客户提供可信赖的产品和服务  
同时，持久的研发投入，让我们以应对未来的低碳环境。



We are not necessarily the best,  
But we must try to do better...

# Company philosophy

## 企业方针

Enterprise pursuit

以质量求生存，以管理创效益，以科技促发展。

Survive by Quality. Creating benefit by management.  
Promoting development by science and technology.

## 企业精神

Enterprise Spirit

诚信 勤奋 务实 创新

Integrity Diligence Practicability Innovation

## 服务宗旨

Service Purpose

尽心尽力竭诚服务客户

Do our best ,Sincere service customers

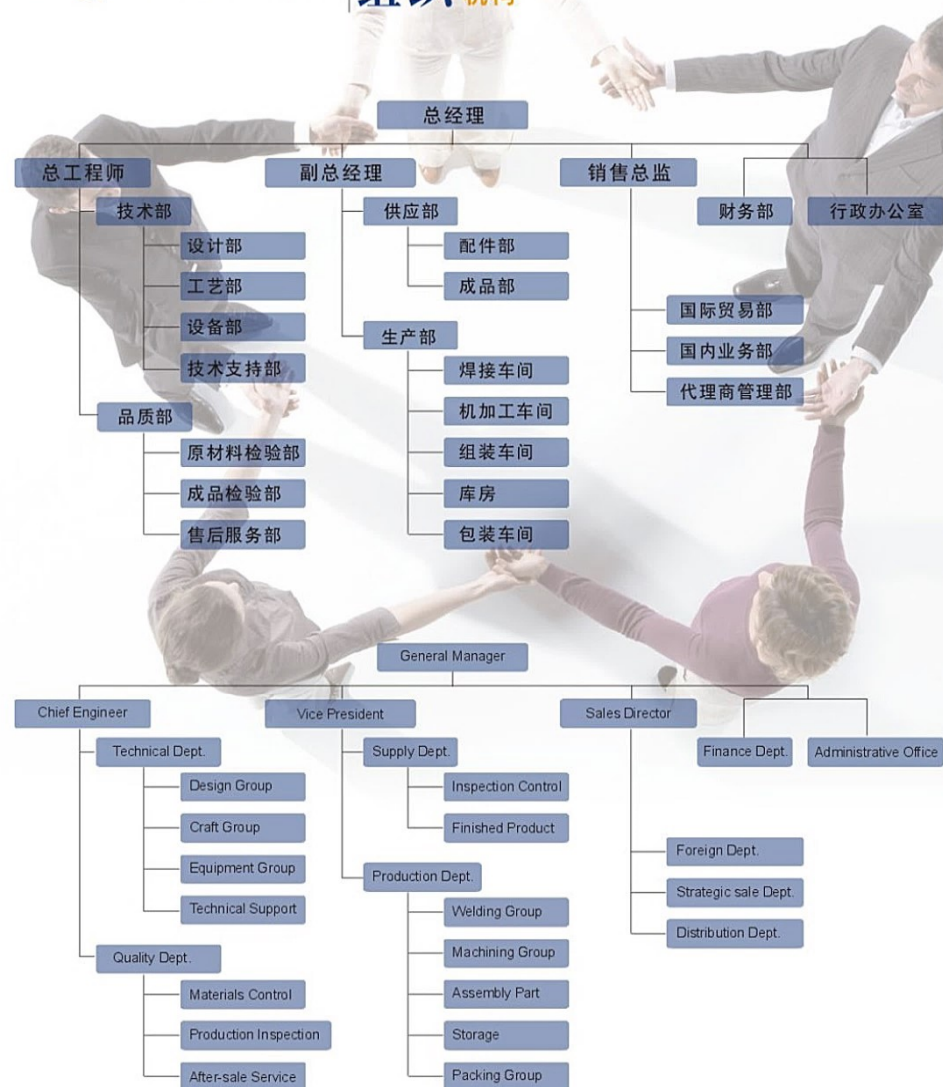
## 质量理念

Quality Concept

精益制造、细节完美、创新进取、追求卓越

Lean manufacturing, perfect detail, innovation and progress, the pursuit of excellence

## Organization 组织机构



# PROCESSING WORKSHOP | 加工 车间

Technological innovation has always been our unwavering pursuit!

——Technology drives dreams.



技术创新一直是我們堅定的追求!

——科技推動夢想。





匠人之心 国际品牌

WORKSHOP | 车间 库房  
WAREHOUSE

**品质 决定生命。**

企业质量观：质量是准则，质量是责任，质量就是企业的生命。

**QUALITY DETERMINES LIFE.**

Enterprise quality concept: Quality is the standard, Quality is the responsibility, Quality is the life of the enterprise.



## 简介 Brief

莱科水泵进出口阀组成套设备，由蝶阀、止回阀、减震系统、角型吸入扩散器、配管组成。能实现过滤、减震的功能，可以节约安装空间、方便后期维护。

Leco pump import and export valve set of equipment, by the Butterfly Valve, check valve, shock absorption system, angle-type suction diffuser, pipe composition. The utility model can realize the functions of filtering and damping, and can save the installation space and facilitate the later maintenance.

## 技术参数 Technical parameter

公称通径 Nominal path : DN50~DN600  
公称压力 Nominal pressure : PN16  
适用温度 Applicable temperature : -10°C ~80°C  
适用介质 Suitable medium : 水 water  
测试标准 Test Standard : GB/T 13927-2008

## 主要零部件材质 Material of main parts

零件名称 Part Name	过滤器壳体 Filter housing	密封圈 Sealing ring	蝶阀 止回阀 Butterfly Valve, check valve	过滤网 Filter screen
材质 Material Quality	碳钢环氧喷涂 Epoxy coating on carbon steel	EPDM	球铁环氧喷涂 Epoxy coating of nodular iron	304不锈钢 304 stainless steel

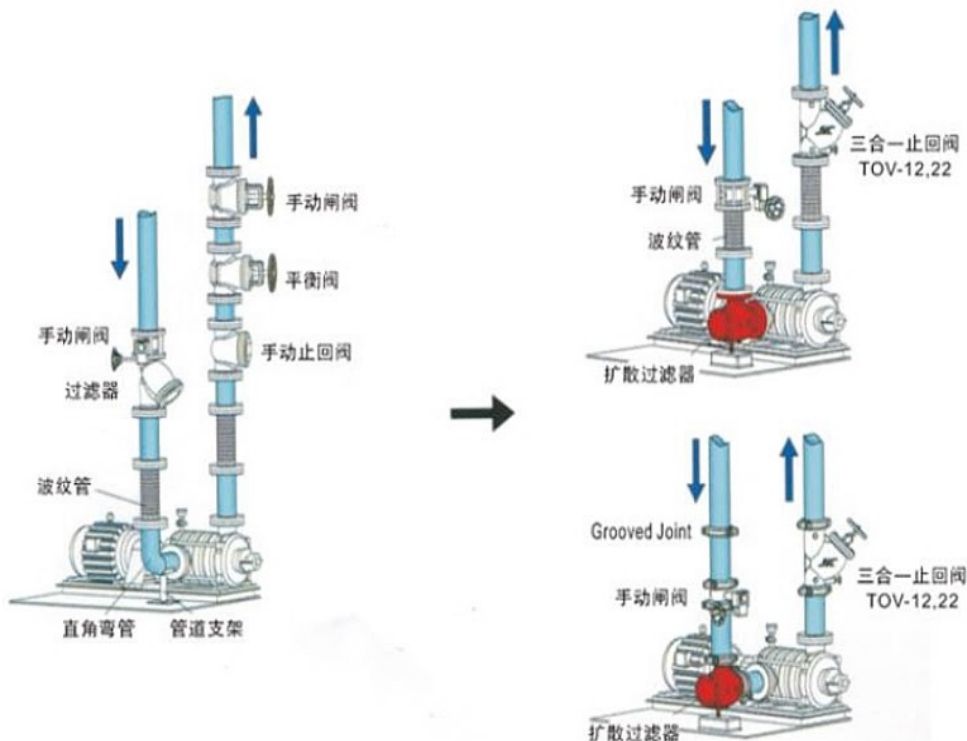
## 关键技术 Key Technology

三重密封技：利用C字型垫圈形成的反作用力形成非常可靠的密封。

TRIPLE SEAL: a very reliable seal with a reaction of C type washers.

挠性减震：利用挠性卡箍间2mm的缝隙吸收、隔绝震动

Flexible Shock Absorption: Using flexible clamp between the gap of 2mm absorption, isolation of vibration



### 简介 Brief

法兰Y型过滤器是输送介质的管道系统不可缺少的一种装置，通常安装在减压阀、泄压阀、定位水阀或其它设备的进口端，用来清除介质中的杂质，以保护阀门及设备的正常使用。该过滤器具有结构先进，阻力小，排污方便等特点，当流体进入置有一定规格滤网的滤筒后，其杂质被阻挡，而清洁的滤液则由过滤器出口排出，当需要清洗时，只要将可拆卸的滤筒取出，处理后重新装入即可，因此，使用维护极为方便。

Flange type Y filter is conveying medium pipeline system indispensable a device, usually installed in the valve, relief pressure valve, positioning water valve or other equipment imports end, used to remove the impurities in the medium, to the normal use of the equipment and valve protection. The filter has the advantages of advanced structure, small resistance, convenient pollution discharge characteristics, when the fluid into the home of a certain size filter cartridge, the impurities are blocked, and clean filtrate from the filter outlet discharge, when cleaning, as long as can be disassembly of the filter cylinder is removed, you can reload after treatment. Therefore, the use of the maintenance is very convenient.

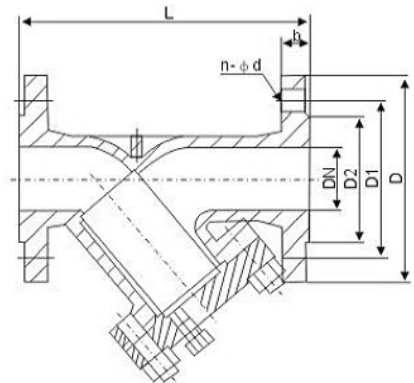
### 性能规范 Technical data

公称压力PN(MPa) Nominal pressure	1.6	2.5
适用温度 °C Suitable temperature	≤ 200	
适用介质 Suitable medium	水、油、气体等 Water, oil, gas, etc.	
法兰标准 Flange standard	GB/T9113.1	
检验标准 Inspection standard	GB/T13927	


**GL41H**

### 主要零部件材料 Material of main parts

零件名称 Part name	材料 Material
阀体、阀盖 Body, bonnet	铸铁、球铁、铸钢 Cast iron, ductile iron, cast steel
O型密封圈 O-ring	NBR
固定螺栓 Fixed bolt	钢制或镀锌螺栓 Steel or galvanized bolts
滤网 Filter	不锈钢 Stainless steel



### 主要尺寸表 Main dimensions

DN (mm)	L	H	D		D1		D2		b		n-φd	
			1.6	2.5	1.6	2.5	1.6	2.5	1.6	2.5	1.6	2.5
20	145	113	105	105	75	75	55	55	14	16	4-φ14	4-φ14
25	155	143	115	115	85	85	65	65	14	16	4-φ14	4-φ14
32	180	166	135	135	100	100	78	78	16	18	4-φ18	4-φ18
40	195	184	145	145	110	110	85	85	16	18	4-φ18	4-φ18
50	215	213	160	160	125	125	100	100	16	20	4-φ18	4-φ18
65	250	303	180	180	145	145	120	120	18	22	4-φ18	8-φ18
80	280	328	195	195	160	160	135	135	20	22	8-φ18	8-φ18
100	300	385	215	230	180	190	155	160	20	24	8-φ18	8-φ23
125	340	465	245	270	210	220	185	188	22	28	8-φ18	8-φ25
150	385	530	280	300	240	250	210	218	24	30	8-φ23	8-φ25
200	450	665	335	360	295	310	265	278	26	34	12-φ23	12-φ25
250	528	720	405	425	355	370	320	332	30	36	12-φ25	12-φ30
300	590	805	460	485	410	430	375	390	34	40	12-φ25	16-φ30
350	680	862	520	550	470	490	435	448	34	44	16-φ25	16-φ34
400	775	908	580	610	525	550	485	505	36	48	16-φ30	16-φ34
450	853	929	640	660	585	600	545	555	40	50	20-φ30	20-φ34
500	908	1000	705	730	650	660	608	610	44	52	20-φ34	20-φ41
600	1135	1200	840	840	770	770	718	718	48	56	20-φ41	20-φ41



## 简介 Brief

ZPG型自动反冲洗过滤器是专用水管道上的一种新产品，该产品设计合理，使用方便。产品在施工中会出现大量杂物收集到过滤器内，在工作中运转中这些杂物给管道上设备带来极大危害，该产品起到了很大保护作用，把所有杂物收集到过滤器内，可保护管道上设备，该产品在调试和维修中除污不需拆卸任何部件，可节省人力、物力，目前是理想的新产品。

ZPG auto-against washing filter is dedication water conduit on one kind of new product, this product design is reasonable, easy to operate. The product can appear the massive sundry goods collection in the construction to have been to in the filter, revolves these sundry goods in the work the equipment to bring the enormous harm for the pipeline on, this product got up the very big protective function, had been to in the filter all sundry goods collection, might protect on the pipeline the equipment, this product eliminated the dirt in the de-bugging and the service not to have to disassemble any part, might save the manpower, the physical resource, at present is the ideal new product.

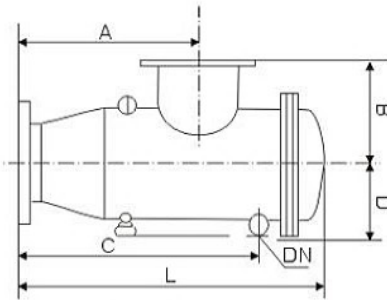
## 工作原理 Work principle

管理系统在正常工作时，管道内杂物会收集到过滤器网内排污口上，不需拆卸过滤器任何部件来排除污物，只需打开排污阀即可排污。①在排污前先把过滤器前面的阀门，关小流量，进行排污。②排污时把转向阀转向冲洗方向，水从转向阀前部进入，往过滤网外部流过，然后又从过滤网外部进入转向阀后部，杂物全部集中排污口上，然后再打开排污阀进行排污，起到了最佳自动反冲洗过滤器全部功能。

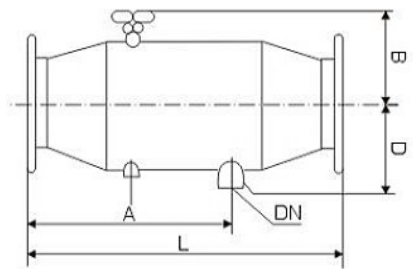
Management system at normal working chron, conduit intrinsically sundries met collect filter intra-network drain upper, not require take down filter any assembly came eliminate contamination, nothing remains but to on opening blow-down valve namely approve blowdown from out up.(1) At blowdown front priority handgrip filter anterior valve, turn down flow, proceed blowdown. (2) Blowdown chron do with conversion valve tum flush heading, water from conversion valve forehead ingress, wend filter external flow past, then again from filter screen exterior ingress conversion valve tail, sundries whole foci drain upper, and then reopen blow-down valve proceed blowdown, got up here we be best automatic flush back filter whole function



ZPG



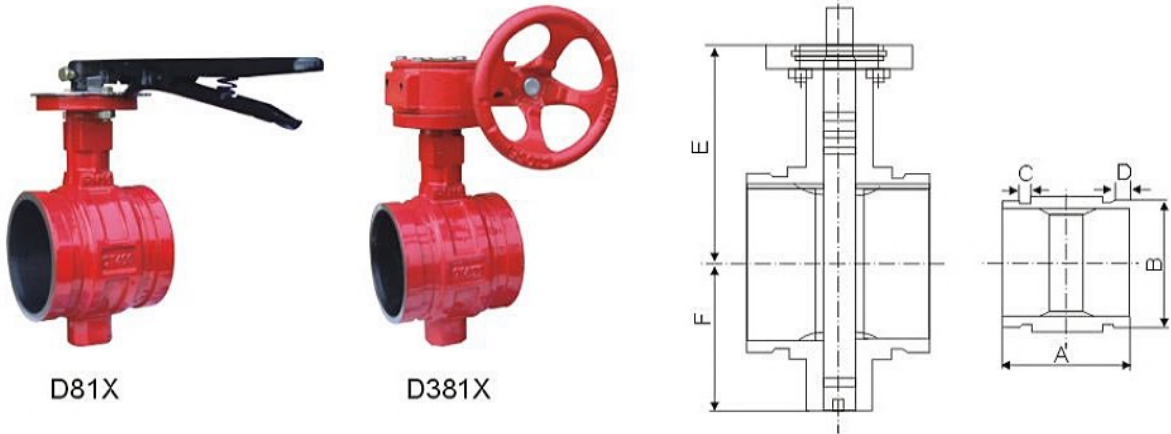
ZPG-II型



ZPG-I型

## 主要尺寸表 Main dimensions

DN(mm)	L	A	B	C	D	排污口DN Pollution outlet	DN(mm)	L	A	B	C	排污口DN Pollution outlet
40	320	170	100	226	80	15*	40	250	180	63	90	15*
50	350	185	110	244	90	15*	50	255	185	70	100	15*
65	380	200	120	270	100	20*	65	270	190	83	120	20*
80	445	230	140	310	120	25*	80	320	225	96	140	25*
100	536	265	160	365	160	32*	100	350	250	128	180	32*
125	624	315	190	440	180	40	125	430	320	162	200	40
150	728	375	220	520	220	50	150	525	380	189	230	50
200	884	500	280	670	260	65	200	700	520	220	280	65
250	1120	625	320	830	310	80	250	875	660	255	330	80
300	1310	750	360	1000	340	100	300	1050	790	294	380	100
350	1514	875	420	1180	380	125	350	1200	885	330	450	125
400	1730	1000	417	1350	420	150	400	1400	1040	377	480	150
450	1896	1125	510	1500	450	150	450	1550	1145	420	500	150
500	2080	1250	550	1680	520	150	500	1700	1250	462	580	150
600	2490	1500	650	2000	560	200	600	2000	1460	437	650	200
700	2680	1600	680	2150	640	200	700	2280	1720	607	700	200
800	2880	1750	700	2300	760	200	800	2500	1900	685	820	200
900	3150	1850	820	2480	820	200	900	2800	2180	785	880	200
1000	3370	2000	920	2675	900	250	1000	3120	2470	860	920	250
1200	3610	2100	1000	1900	960	250	1100	3450	2780	915	960	250
1400	3850	2250	1150	3050	1040	250	1200	3370	3000	965	1040	250
1600	4700	2800	1400	3800	1400	250	1500	4470	3650	1220	1400	250



简介 Brief

沟槽式蝶阀具有安装快速、简易、安全、可靠、不受安装场地限制、便于管道与阀门的维修保养，有隔振隔音与一定的角度范围内有克服管道连接不同轴而产生仿差，解决温差所产生热胀冷缩等优点。

广泛应用于输送流体管道的给排水、消防、空调、燃气、石油、化工、水处理、市政、造船等管道工程作为控制流体作用。

Grooved butterfly valve has the advantages of rapid installation, simple, safe, reliable, easy to install without space restrictions, pipeline and valve maintenance, vibration and sound isolation and a certain angle range has overcome the pipeline connecting different axis caused imitation, solve the temperature generated the advantages of thermal expansion and contraction. Widely used in water supply and drainage, fire, air conditioning, gas, oil, chemical, water treatment, municipal, shipbuilding and other pipeline projects as a control fluid.

性能规范 Technical data

公称压力(MPa) Nominal pressure	PN16	设计标准 Design standard	GB 5135.6-2003
强度实验压力(MPa) Strength test pressure	6.4	试验标准 Test standard	GB 5135.6-2003
密封实验压力(MPa) Seal test pressure	3.2	适用温度 Applicable temperature	-10~80℃
适用介质 Applicable medium	水、油、气及非腐蚀性介质 Water, oil, gas non corrosive media		

主要零部件材料 Material of main parts

编号 No.	零件名称 Part name	材料 Material	编号 No.	零件名称 Part name	材料 Material
1	阀体 Valve body	球墨铸铁 Ductile iron	5	胶圈 Rubber ring	橡胶 Rubber
2	蝶板 Butterfly disc	球墨铸铁 Ductile iron	6	定位盘 Positioning disc	不锈钢 Stainless steel
3	圆锥销 Conical pin	不锈钢 Stainless steel	7	手柄 Handle	碳钢 Carbon steel
4	阀杆 Valve stem	马氏体不锈钢、碳钢 Martensitic stainless steel, carbon steel			

主要尺寸表 Main dimensions

DN		A	B	C	D	E	F
mm	inch						
50	2"	92	60	8	16	100	53
65	2 1/2"	102	76	8	16	108	61
80	3"	102	89	8	16	114	68
100	4"	116	114	10	16	136	85
125	5"	125	141	10	16	162	99
150	6"	125	165	10	16	174	111
200	8"	138	219	11	19	204	145
250	10"	159	273	13	19	230	190
300	12"	166	324	13	19	270	230

## 用途 Introduction

本公司生产的蜗轮传动法兰蝶阀，广泛应用于公称压力： $\leq$ PN1.6MPa，适用温度： $\leq$ 200℃的石油、化工、食品、医药、冶金、船舶、造纸、工业环保、给排水、高层建筑管道上，可在多种腐蚀性、非腐蚀性的气体、液体、浆流体及固体粉末管线和容器作启闭或调节介质流量之用。

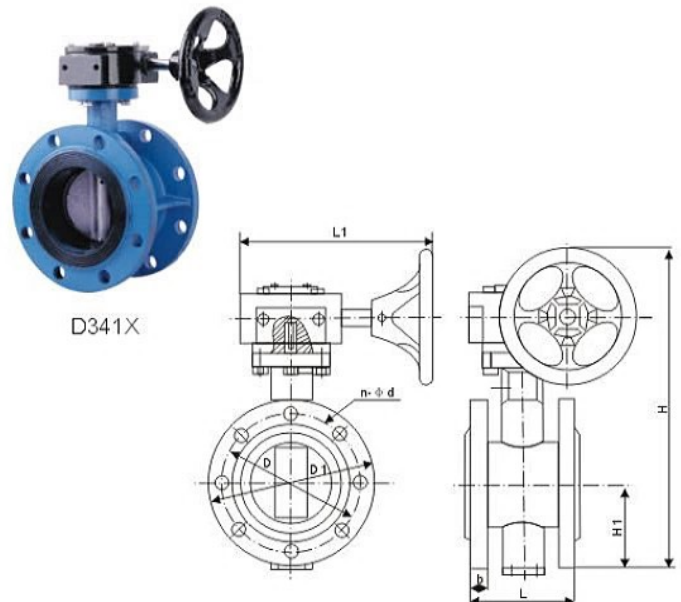
The company's worm gear drive flange butterfly valve is widely used in the nominal pressure:  $\leq$ PN1.6MPa, application temperature:  $\leq$ 200℃ oil, chemical, food, medicine, metallurgy, shipbuilding, paper, industrial environmental protection, water supply and drainage, high-rise building the pipeline, in a variety of corrosive, non-corrosive gases, liquids, liquid and solid powder loading pipelines and containers for hoisting or adjust the flow of the medium used.

## 性能规范 Technical data

公称直径 DN(mm) Nominal diameter	DN50~1000
公称压力 PN(MPa) Nominal pressure	1.0~1.6
适用温度 °C Working temperature	-23~+121
适用介质 Suitable mediums	淡水、污水、海水、气体等 Fresh water, sewage, sea water, gas etc.

## 主要零部件材质 Material of main parts

零件名称 Part name	材料名称 Material name
阀体 Valve body	灰铸铁、球墨铸铁、不锈钢 Cast iron, ductile iron, stainless steel
阀板 Valve disc	球墨铸铁、不锈钢、铝合金 Ductile iron, Stainless steel, aluminium alloy
阀轴 Valve stem	碳钢、不锈钢 Carbon steel, stainless steel
阀座 Valve seat	橡胶 Rubber
密封 Seal	O型圈 O Type rang



## 主要尺寸表

DN		L	L1	D		D1	H	H1	b	n-φd	
mm	inch			PN1.0MPa	PN1.6MPa					PN1.0MPa	PN1.6MPa
50	2"	108	180	125	125	150	326	83	20	4-φ18	4-φ18
65	2½"	112	180	145	145	165	344	93	20	4-φ18	4-φ18
80	3"	114	180	160	160	200	363	100	22	4-φ18	8-φ18
100	4"	127	180	180	180	220	396	114	22	8-φ18	8-φ18
125	5"	140	180	210	210	250	421	125	24	8-φ18	8-φ18
150	6"	140	180	240	240	280	453	143	24	8-φ23	8-φ23
200	8"	152	270	295	295	335	578	170	26	8-φ23	12-φ23
250	10"	165	270	350	355	405	638	198	26	12-φ23	12-φ28
300	12"	178	380	400	410	455	731	223	32	12-φ23	12-φ28
350	14"	190	380	460	470	525	783	270	36	16-φ23	16-φ28
400	16"	216	450	515	525	580	888	300	38	16-φ28	16-φ31
450	18"	222	480	565	585	640	958	340	40	20-φ28	20-φ31
500	20"	229	480	620	650	705	1005	355	42	20-φ28	20-φ34
600	24"	267	480	725	770	825	1128	410	48	20-φ30	20-φ36
700	28"	292	640	840	840	920	1476	478	53	24-φ30	24-φ36
800	32"	318	640	950	950	1020	1533	525	58	24-φ33	24-φ39
900	36"	330	750	1050	1050	1120	1655	585	65	28-φ33	28-φ39
1000	40"	410	850	1160	1170	1340	1765	640	76	28-φ36	28-φ42
1200	48"	470	850	1380	1390	1560	1995	755	85	32-φ39	32-φ48
1400	56"	530	1000	1590	1590	1760	2310	910	103	36-φ42	36-φ48
1600	64"	600	1000	1820	1820	1970	2595	1030	123	40-φ48	40-φ56
1800	72"	697	1100	2020	2020	2180	2810	1140	135	44-φ48	44-φ56
2000	80"	760	1100	2230	2230	2345	3100	1250	145	48-φ48	48-φ62

### 简介 Brief

法兰球阀具有体积小、重量轻、启闭迅速、阻力小、零泄漏、安装方便等特点，选用不同的材质，可分别适用于水、蒸汽、油品、液化气、天然气、煤气、硝酸、醋酸、尿素等多种介质，作截断或接通管路用。

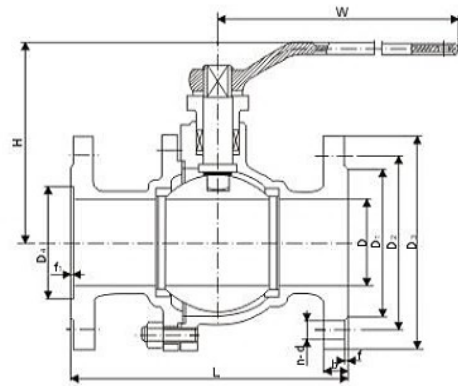
Flange ball valve has the advantages of small volume, light weight, rapid opening and closing, small resistance, zero leakage, convenient installation, use different materials, can be separately applied to water, steam, oil, liquefied petroleum gas, natural gas, coal gas, nitric acid, acetic acid, urea and other media, are cut off or connected to the pipeline.

### 主要零部件材料 Material of main parts

零件名称 Part name	材料 Material	零件名称 Part name	材料 Material
阀体 Body	WCB,CF8,CF8M	阀杆 Stem	2Cr13,304,316
阀座 Seat	聚四氟乙烯 PTFE	填料 Packing	聚四氟乙烯 PTFE
球体 Ball	WCB,CF8,CF8M	填料压盖 Packing gland	WCB,CF8,CF8M
密封垫 Sealing gasket	聚四氟乙烯 PTFE	手柄 Handle	不锈钢 Stainless steel



Q41F



### 主要尺寸表 Main dimensions

PN (MPa)	DN (mm)	D	D1	D2	D3	f	b	n-φd	L	H	W
1.6	15	13	45	65	95	2	14	4-φ14	130	75	130
	20	19	55	75	105	2	14	4-φ14	140	84	170
	25	25	65	85	115	2	14	4-φ14	150	90	170
	32	32	78	100	135	2	16	4-φ18	165	107	200
	40	38	85	110	145	3	16	4-φ18	180	127	250
	50	51	100	125	160	3	16	4-φ18	200	140	250
	65	64	120	145	180	3	18	4-φ18	220	164	350
	80	76	135	160	195	3	20	8-φ18	250	177	350
	100	102	155	180	215	3	20	8-φ18	280	206	420
	125	127	185	210	245	3	22	8-φ18	320	292	700
	150	152	210	240	280	3	24	8-φ23	360	320	1000
2.5	200	203	265	295	335	3	26	12-φ23	400	365	1300
	250	254	320	355	405	3	30	12-φ25	533	420	1800
	15	13	45	65	95	2	14	4-φ14	130	75	130
	20	19	55	75	105	2	14	4-φ14	140	84	170
	25	25	65	85	115	2	14	4-φ14	150	90	170
	32	32	78	100	135	2	16	4-φ18	165	107	200
	40	38	85	110	145	3	16	4-φ18	180	127	250
	50	51	100	125	160	3	20	4-φ18	200	140	250
	65	64	120	145	180	3	22	8-φ18	220	164	350
	80	76	135	160	195	3	22	8-φ18	250	177	350
	100	102	160	190	230	3	24	8-φ23	280	206	420
	125	127	188	220	270	3	28	8-φ25	320	292	700
	150	152	218	250	300	3	30	8-φ25	360	320	1000
	200	203	278	310	360	3	34	12-φ25	400	365	1300
250	254	332	370	425	3	36	12-φ30	533	420	1800	

## AFTER-SALES SERVICE 售后服务

为适应市场发展的需求，建立企业诚信价值体系，我公司质量管理部门专门设立了售后服务组，配备了多名专职人员处理售后服务事宜，为此公司承诺：

- 1、提供全部阀门及配件的到货、验货、安装、调试、运行、售后服务有关的技术支持等服务。
- 2、提供阀门的日常维护的保养及常见故障排除的培训服务。
- 3、提供24小时的技术支持热线。
- 4、质量保证期自最终验收证书签字之日起12个月。在保证期内，货物引起的任何质量问题，应由供货商在接到通知后7个工作日内修复。所有费用，由供货商承担。若不能按时修复，则质量保证期相应从货物修复后重新算起。
- 5、质量保证期结束后，由于阀门本身内在质量问题（质量保证期内未发现，如铸造、机加工缺陷等）引起的维修和更换零部件费用由制造商承担，非产品质量问题而发生的更换零部件费用由用户承担。
- 6、用户对我公司产品提出质量异议，公司保证在接到用户提出异议后，24小时内作出处理意见，若需现场解决，保证派出专业技术服务人员，并做到质量问题不解决服务人员不撤离。对每件用户反馈的产品质量问题及处理结果我公司予以存档，以供查询和技术参考。



重视合同，确保质量；  
准时交付，严守承诺。

Pay attention to the contract and ensure the quality;  
Deliver on time, keep promise.

In order to adapt to the requirement of market development, the establishment of enterprise value system integrity, our company quality management department to set up special after-sale service group, more than equipped with full-time personnel to handle matters relating to after-sales service, so the company promises:

- 1) provide all valves and accessories of the arrival of the goods, inspection, installation, commissioning, operation and after-sale service related technical support and other services.
- 2) provide the daily maintenance of the valve maintenance and common troubleshooting training services.
- 3) provide 24 hours technical support hotline.
- 4) the quality guarantee period from the date of final acceptance certificate signed 12 months. During the quality guarantee period, any quality problems caused by the goods, should by the supplier within 7 working days upon receipt of notification of repair. All fees shall be borne by the supplier. If can't repair on time, the quality guarantee period from the date the goods after repair back accordingly.
- 5) after the quality guarantee period, due to the internal valve itself quality problem (quality guarantee period is not found, such as casting, machining defects, etc.) cause of the cost of repair and replacement parts shall be borne by the manufacturer, the product quality problems occurring in the course of replacement of spare parts cost borne by the user.
- 6) user quality of the products of our company, the company guarantee in after receiving the user object, to deal with in 24 hours, if need to the scene to solve, ensure to send professional technical service personnel, and quality problem is not solved the evacuation of the service personnel. For each user feedback of quality problems and process the results to my company the archive, for queries and technical reference.