

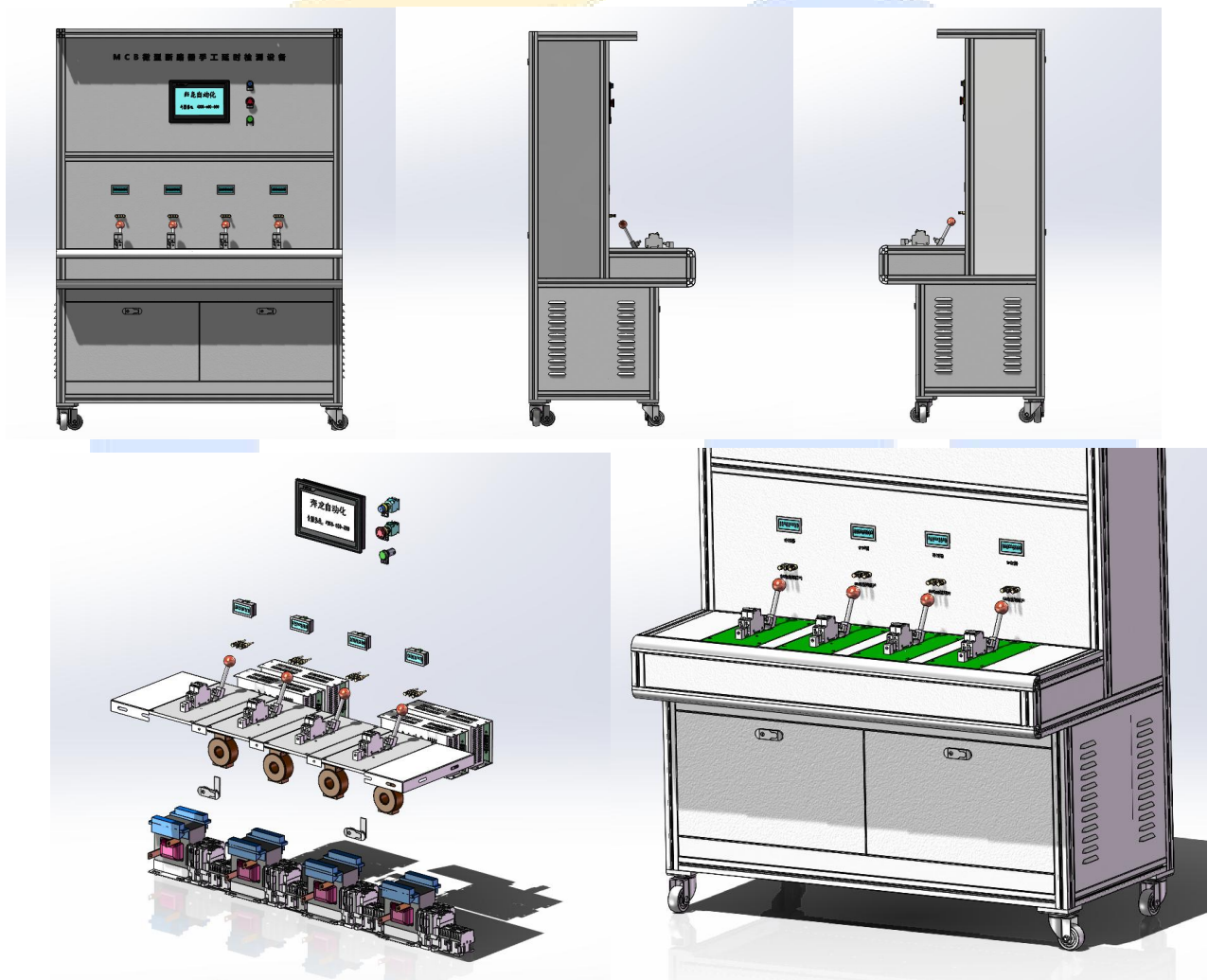
MCB manual thermal calibration bench (4 station)

Equipment Information

设备信息

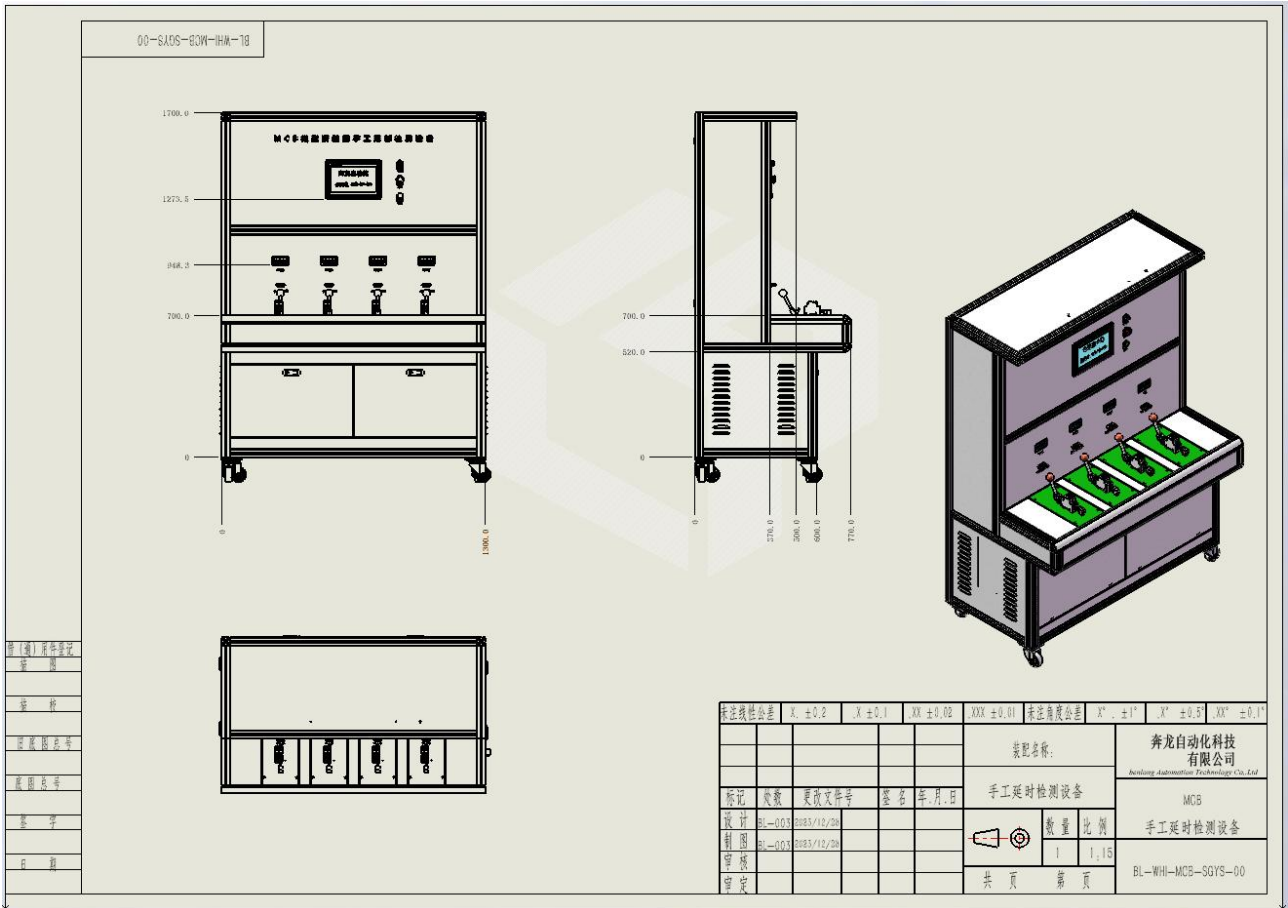
Equipment drawings:

设备图纸



Equipment Size

设备尺寸



Real appearance of the equipment
设备真实外观



Equipment Operation Video
设备操作视频

Basic equipment parameters

设备基本参数

- (1) Working supply voltage /工作电源电压: 220V±10%, 50Hz
- (2) Total Power / 总功率: 5KW
- (3) Ground resistance / 接地电阻 $\leq 10 \Omega$, insulation resistance / 绝缘电阻 $\geq 5M \Omega$
- (4) False judgement rate / 误判率 $\leq 1\%$
- (5) Current setting range: between 1~400A,
the transformer needs to ensure that 3 gears switching, can be set arbitrarily.
电流设定范围: 1~400A 之间, 互感器需保证 3 个档位切换, 可任意设定。
- (6) Current accuracy of the device:
the relative error between the measured value and the displayed value is $\pm 1\%$,
the time from the beginning of the applied current to the stability is controlled within 2 seconds,
and the waveform distortion is $\leq 3\%$;
设备的电流精度: 实测值与显示值相对误差为 $\pm 1\%$, 从施加电流开始到稳定的时间控制在 2 秒以内, 波形失真度 $\leq 3\%$;

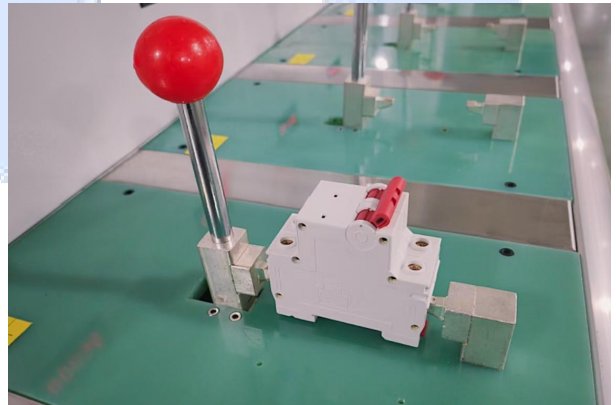
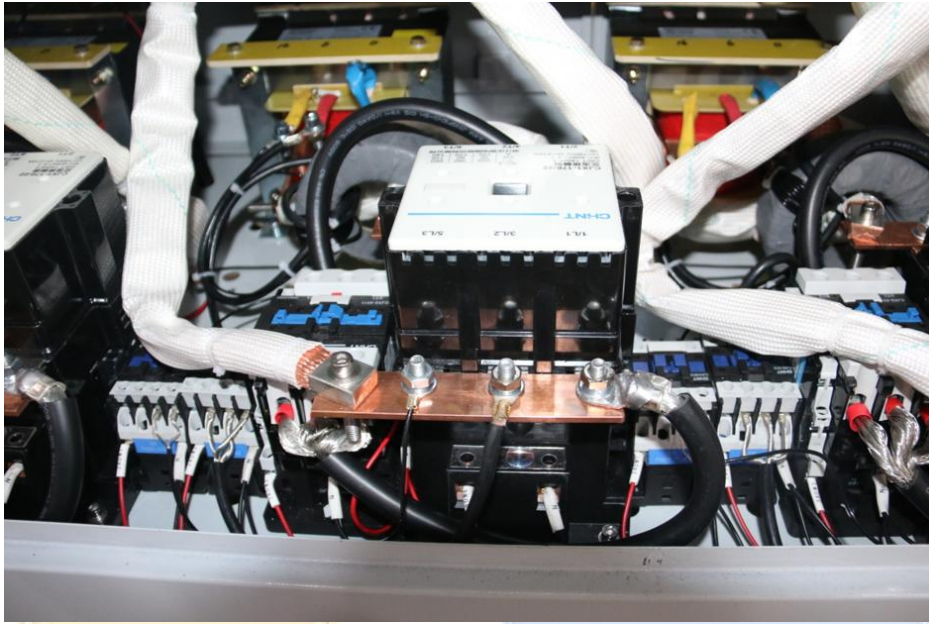
Selection of key components

关键元器件选用

- (1) HMI touch screen: MCGS
 - (2) Two/Three Hole Socket: Chinese Brand
 - (3) Key Switch: Panasonic
 - (4) Relay section: CHINT
 - (5) Circuit breaker part: CHINT
 - (6) Contactor part: CHINT
 - (7) Tricolour warning light: Nanzhou
- The equipment in this material is designed and manufactured in accordance with IEC60898 standard or GB10963.1 standard; all the key imported parts of the equipment should have 3C certification; all the equipment is equipped with safety approval authorisation.
本资料中设备按照 IEC60898 标准或 GB10963.1 标准设计制造; 所有设备关键进口配件应有 3C 认证; 所有设备配有安全认可授权书。

2.7.Attachment Reference Picture

附件参考图片



BENLONG
AUTOMATION

MCB miniature circuit breaker manual delay detection equipment
MODEL: MCB

VOLTAGE: 220V POWER RATING: 8.5kw

NO.: BL20130001493 FACTORY DATE: 2024.01

① Baixiang Avenue Beibaixiang Town Yueqing Zhejiang China
② +86-577-82777057 +86 150 5837 0007
③ www.benlongkj.com ④ zzi@benlongkj.cn SINCE 2008

BENLONG AUTOMATION

Benlong Automation Technology Co., Ltd. Date: 2024-01-17
Time: 12:53:18

Manual delay detection equipment for MCB micro circuit breakers--Main

Countdown to maintenance	0	Years	1	Days	8	Hours	11	Minutes	53	Seconds
The next maintenance	0	Years	360	Days	7	Hours	55	Minutes	27	Seconds
Over-current alarm	0	Years	0	Days	0	Hours	0	Minutes	0	Seconds

Auto window Manual Window Set Window data report

History Alarm OEE Window Company Profile Chs/Eng Change

Environmental & Safety Requirements

环境及安全要求

- Place of use: indoors to avoid direct sunlight
使用地点：户内避免阳光直射；
- Ambient temperature / 环境温度: 0~40℃.
- Relative humidity / 相对湿度: 20 to 90% RH.
- The site is free of corrosive gases, liquids and explosive gases.
现场无腐蚀性气体、液体和爆炸性气体。
- Party A is responsible for arranging the power supply and gas source interface required by the equipment in accordance with Party B's requirements, and docking with Party B's equipment interface for normal operation of the equipment.
甲方负责将该设备所需的电源、气源接口按照乙方规定要求布置到位, 并与乙方设备接口对接, 以便设备正常运行。

