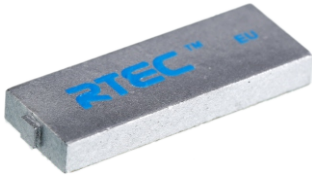


## RTEC Atom™



- High value spare parts
- Crucial materials or objects
- Expensive electronic devices
- Embedded

## Environmental Specifications

Operating Temperature	-30°C to +85°C
Ambient Temperature	-30°C to +250°C
IP Classification	IP68
Shock and Vibration	MIL STD 810-F
Certifications	CE approved RoHS approved ATEX/IECEX certified
Warranty	1 year

## Customization Options

## Encoding

Pre-encoding based on customers' specification, including EPC, User memory and other requests.

## Appearance

Customized appearance design, including logo, barcode, text on the PET label etc.



## Mechanical Specifications

Tag Materials	Ceramic
Surface Materials	Durable Paint
Dimensions	9 x 25 x 3 mm
Weight	3.6 g
Attachment	Industry grade adhesive
Color	High performance epoxy resin Customized colors are available

## RF Specifications

RF Air Protocol	EPC Global Class 1 Gen2 ISO18000-6C
Operating Frequency	UHF 866-868 MHz (ETSI) UHF 902-928 MHz (FCC)
Environment Compatibility	Optimized on metal
Read Range	Up to 7 m (on metal)
Polarization	Linear
IC Type	Impinj R6-P
Memory Configuration	EPC 128bit TID 96bit User 32bit

\*Read ranges indicated in this datasheet is achieved by using our standard testing methodology. Actual performance will be different if different reader hardware and output power is applied.

## Order Information

Product #	RTEC2030301
Product Name	RTEC Atom ETSI
Product #	RTEC2030302
Product Name	RTEC Atom FCC

## RTEC Singapore

57 Mohamed Sultan Road  
#01-05 Sultan Link  
Singapore 238997

## RTEC China

L3 Enterprise accelerator B,  
Scientific innovation District,  
MianYang City  
Sichuan, China 621000

