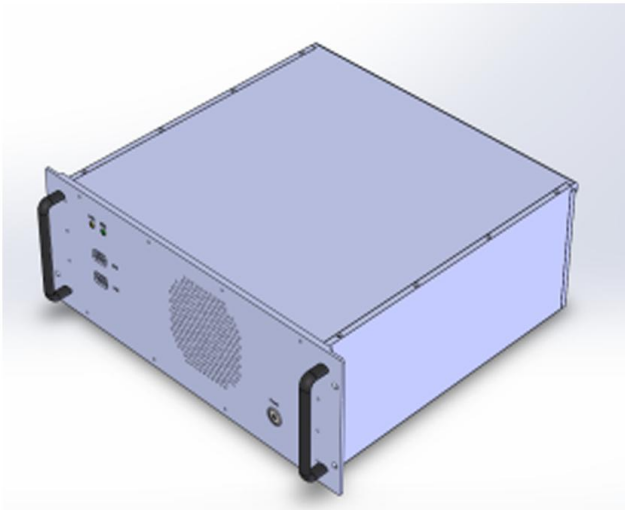


# IPC-4002

## Industrial Embedded PC



### Features

- CPU: 2\* Intel Xeon E5-2630 V3
- RAM: 2\*DDR4 16GB ECC
- Display output: 2080ti graphics card, 4 \* HDMI
- Structural design: Semi-rugged, shock resistant design
- Working temperature: -10° C - +40° C

### Description

IPC-4002 is a semi-rugged industrial embedded pc, with dual CPU LGA 2011-R3 Intel® Xeon® E5-2630 V3, rich I/O ports, 4 \*PCIe x 16, 2 x usb2.0 ,4 x USB3.0, 9 \*SATA3, 2 \*LAN □, supports IPMI, multi-serial ports, and wide working temperature -10°C~+40°C, shock resistant design.

### Specifications

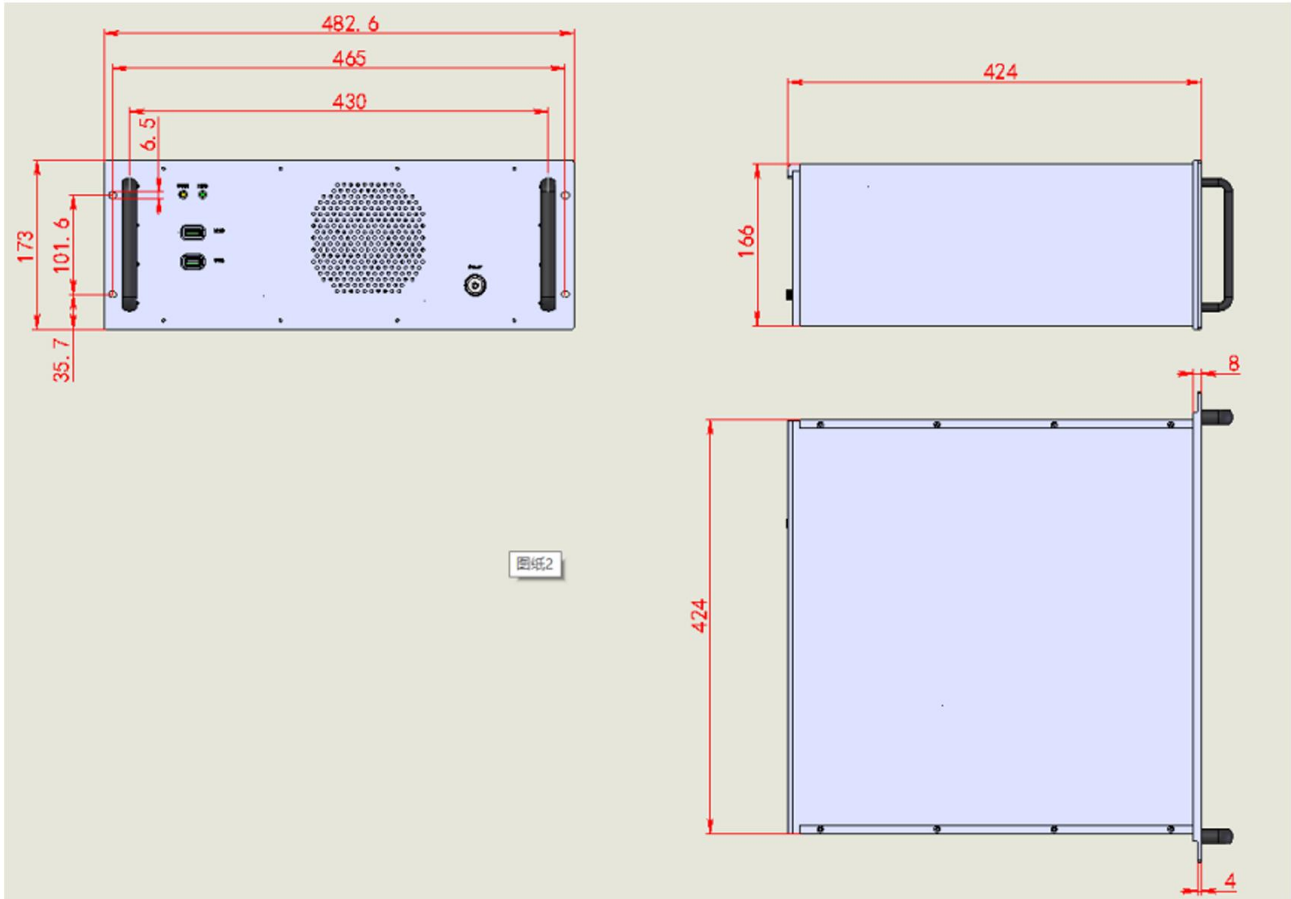
<b>System</b>	CPU	2 x Xeon® E5-2630 V3	
	CPU Frequency	2.4GHz	
	CPU Turbo Boost Technology	Supports 2.0	
	Core quantity	8	
	Thread quantity	16	
	Three-level cache	20M	
	Chipset	Intel ® C610	
	RAM	2 x DDR4 16GB ECC , Max supports 192GB ECC内存	
	Storage	1 x 2.5" 1TB SSD , Max supports 9*SATA, support soft RAID0,1,5,10	
	LAN	2 x Intel I210AT LAN2: Intel® I210-AT PCIe controller with NCSI	
	Display	2080ti discrete graphics card	
	Power	Power input	AC 220V
		Power supply	700W
	I/O ports	USB	Front 2 * usb2.0 , Rear 4 * USB3.0
LAN		2 * 1GbE RJ45	
Display		4 *HDMI	
Serial ports		2 * RS-232 6 * RS-232/422/485 adjustable	
<b>OS</b>	OS	Windows sever	
<b>Environment</b>	Working temperature	-10°C ~ +40°C	
	Storage temperature	-30°C ~ +40°C	
	Humidity	5% ~ 95% non-condensing	

# IPC-4002

## Industrial Embedded PC

### Dimension

mm



### Ordering Information

Optional item	Description
Graphics card	Standard PCIe 16x Graphics Card
Power Supply	according to the graphics card power consumption, optionally redundant power supply
CPU	Intel LGA2011-R3, support V3/V4 Xeon CPU
Function Card	PCI/ PCIE
Aviation Connector	Optional