

# DMT10600T070\_39WTR



## Features:

- Industrial Linux intelligent display terminal based on T113, running Linux5.4 operating system.
- 7.0-inch, 1024\*600 pixels resolution, 16.7M colors, IPS-TFT-LCD, wide viewing angle, Resistive Touch, with shell.
- Adopt DWIN HMI configuration software for secondary development.
- Integrated PLC communication, alarm, sampling, formula and other database management, interface customization, macro command and other functions.
- Compatible with network cable connection with PC to download update project.
- Available for RS232, RS485, CAN and Ethernet ports to connect and communicate with external devices.

## ● Master Control Parameters

Properties	Parameters
Motherboard Level	Industrial
CPU	Dual-core ARM CortexTM-A7 Processor
OS	Linux5.4
FLASH	8GBytes EMMC
RAM	128MBytes DDR3

## ● Display Parameters

Properties	Parameters	Description
Color	16.7M (16777216) colors	24 bit color 8R8G8B
Panel Type	IPS	IPS process, TFT LCM with wide viewing angle
Viewing Angle	85/85/85/85 (L/R/U/D)	Best view: symmetrical
Active Area (A.A.)	154.2mm (W)*85.88mm (H)	-
View Area (V.A.)	155.0mm (W)*87.5mm (H)	-
Resolution	1024*600	Available for 0°/90°/180°/270°rotated display
Backlight	LED	≥30000H(time of the brightness decaying to 50% on the condition of continuous working with the maximum brightness)
Brightness	200nit	100 levels adjustment(It's not recommended to set brightness to 1%~30% of the maximum, which may lead to LCD flicker.)

Note: You can use dynamic screen saver wallpapers to avoid afterimages caused by fixed page display for a long time.

## ● Voltage & Current

Properties	Conditions	Min	Typ	Max	Unit
Power Voltage	-	8.0	12.0	23	V
Operation Current	VCC = +12V, Backlight on	-	270	-	mA
	VCC = +12V, Backlight off	-	120	-	mA

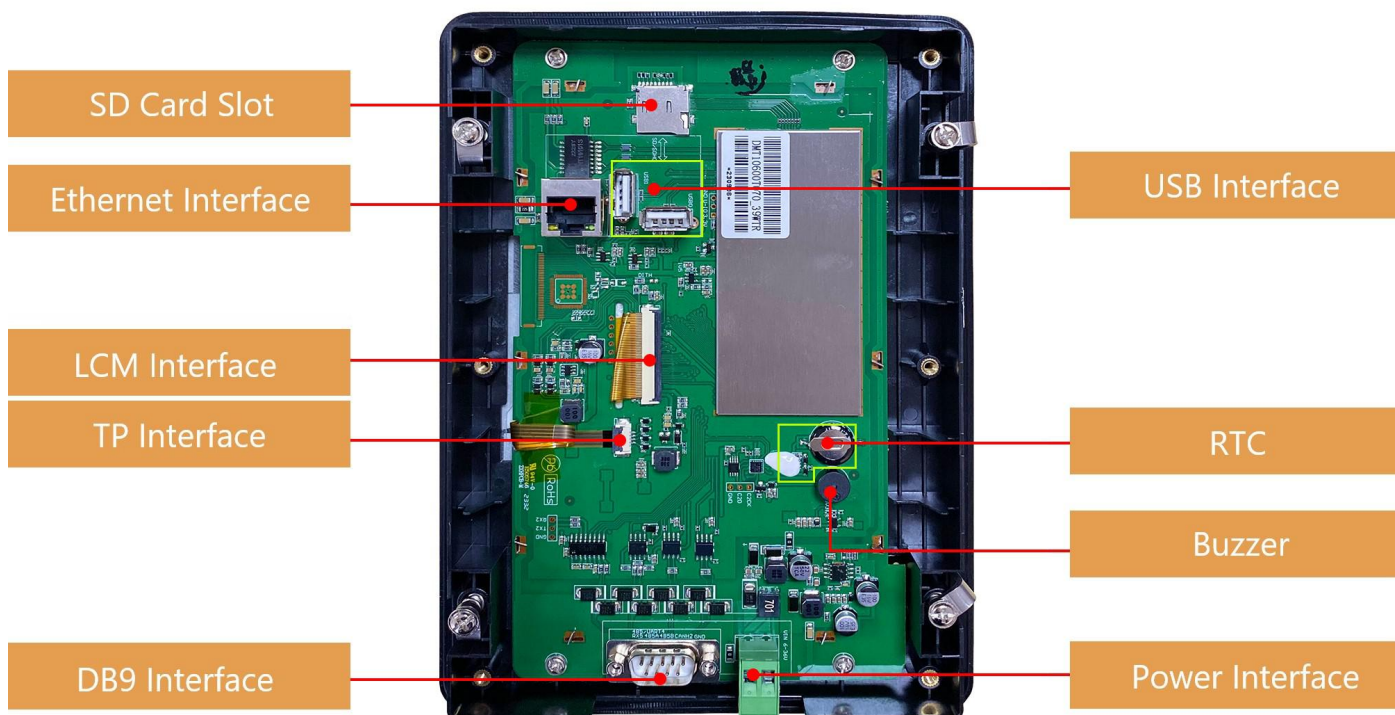
Recommended power supply: 12V 1A DC

## ● Reliability Test

Properties	Conditions	Min	Typ	Max	Unit
Working Temperature	60%RH at 12V voltage	-20	25	70	°C
Storage Temperature	-	-30	25	80	°C
Working Humidity	25°C	10%	60%	90%	RH
Conformal Coating	Yes				
ESD	Air discharge ±8KV; Contact discharge ±6KV				
EFT	Group pulse interference ±2KV				
Protective Level	IP65 (Front)				

**Peripheral and Interfaces**

Properties	Parameters	Description
COM	1-way RS232	UART5
	1-way RS485	UART4
CAN Interface	2-way	Located within the DB9 interface
USB Interface	2-way	HOST*2
SD Card Slot	1-way	Drawer type card slot
Ethernet Interface	1-way	10/100Mbps
RTC	Built-in	Super-capacitor RTC. Accuracy: $\pm 20\text{ppm}$ @25°C
Buzzer	Built-in	3V passive buzzer


**Disclaimer:**

There are multiple parallel raw materials coexisting to guarantee the stable supply. If customers have particular raw material preferences or requirements, please contact the sales personnel.

**● Interface Parameters**

Properties	Conditions	Min	Typ	Max	Unit
Baud Rate	User-defined	3150	115200	3225600	bps
Output Voltage (TXD)	Output 1	-	-5.0	-3.0	V
	Output 0	3.0	5.0	-	V
Input Voltage (RXD)	Input 1	-15.0	-5.0	-	V
	Input 0	-	5.0	15.0	V
Interface	RS232*1, RS485*1, CAN*2				
Socket	2Pin-5.08mm Socket, DB9 interface				

**● Packing Capacity & Dimension**

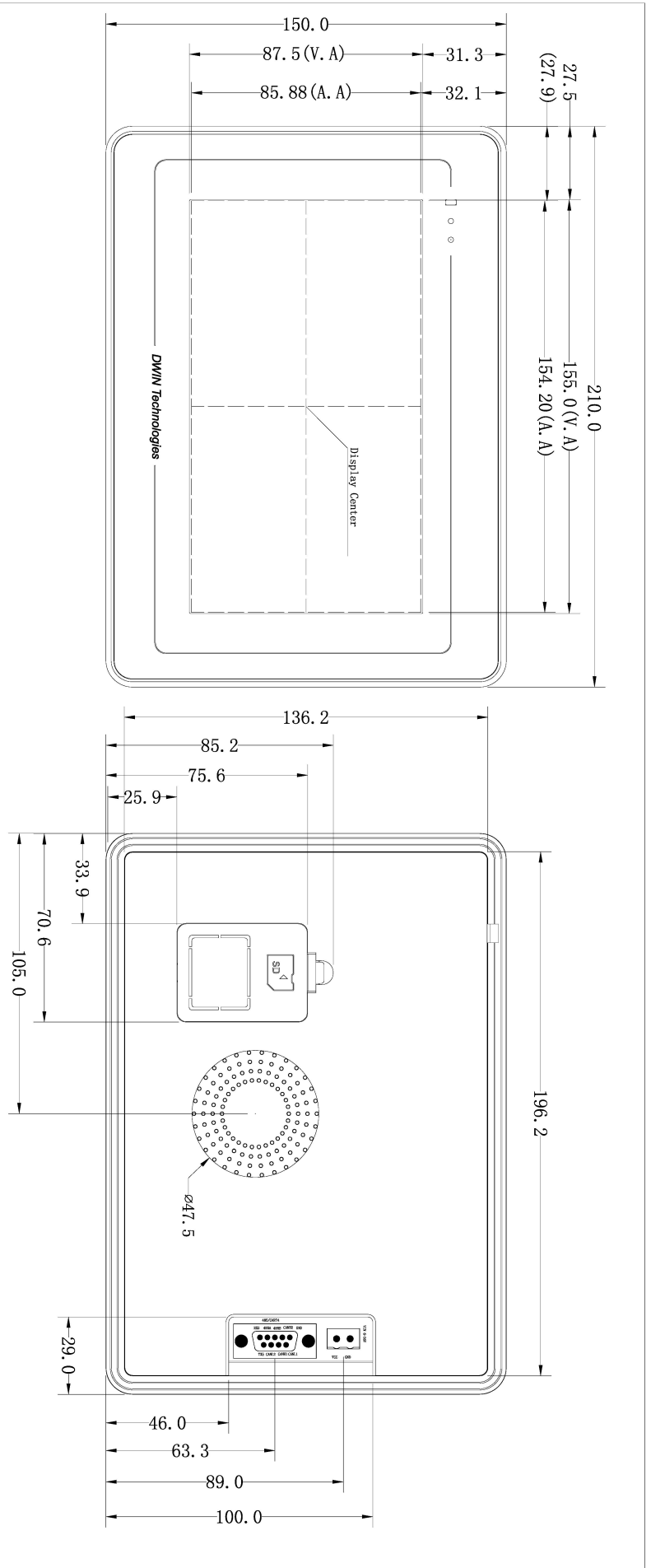
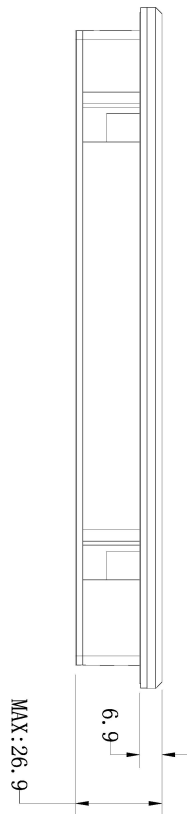
Dimension				
Dimension	210.0 (W) *150.0(H)*26.9(T)mm			
Net Weight	560g			
Packing Capacity				
Model	Size	Layer	Quantity/Layer	Quantity(Pcs)
Carton1:	220mm(L)*160mm(W)*47mm (H)	-	-	-
Carton2:	250mm(L)*200mm(W)*80mm (H)	2	1	2
Carton3:	320mm(L)*270mm(W)*80mm (H)	-	-	-
Carton4:	450mm(L)*350mm(W)*300mm(H)	1	16	16
Carton5:	600mm(L)*450mm(W)*300mm(H)	1	30	30

Definition	Pin#	Type	Description
RX5	1	I	UART5 DIN
485A	2	A+	RS485+
485B	3	B-	RS485-
CANH2	4	H	CANH
GND	5	P	UART5 GND
TX5	6	0	DOUR
CANL2	7	L	CANL
CANH1	8	H	CANH
CANL1	9	L	CANL

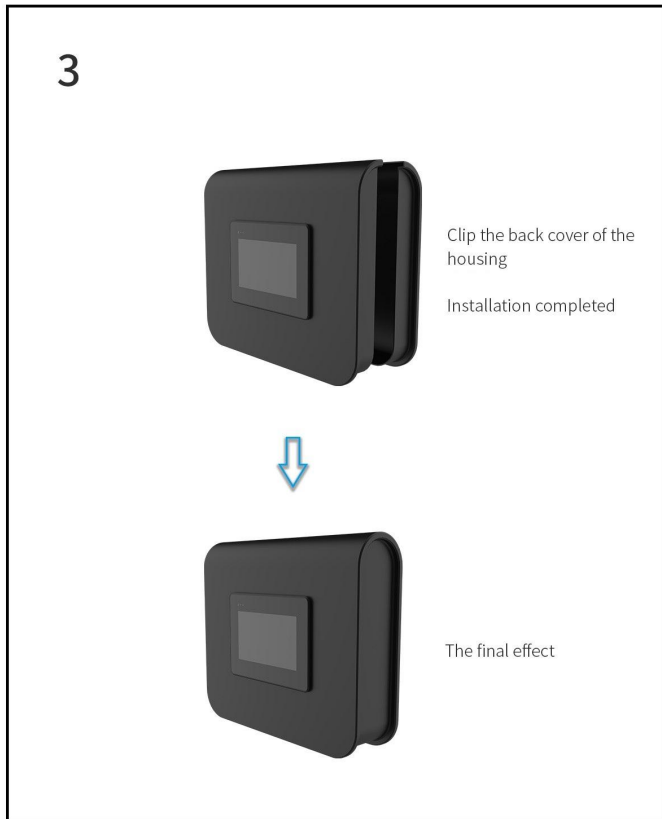
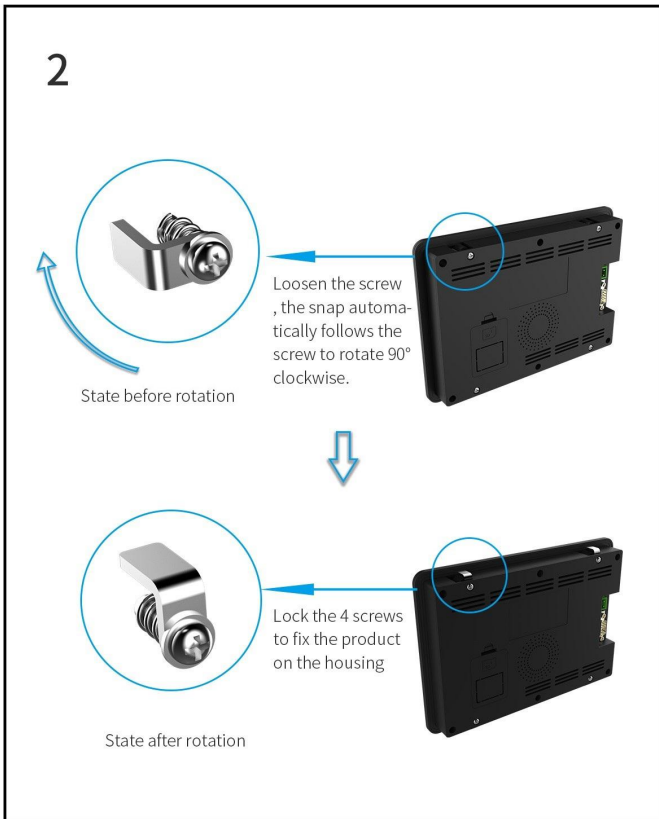
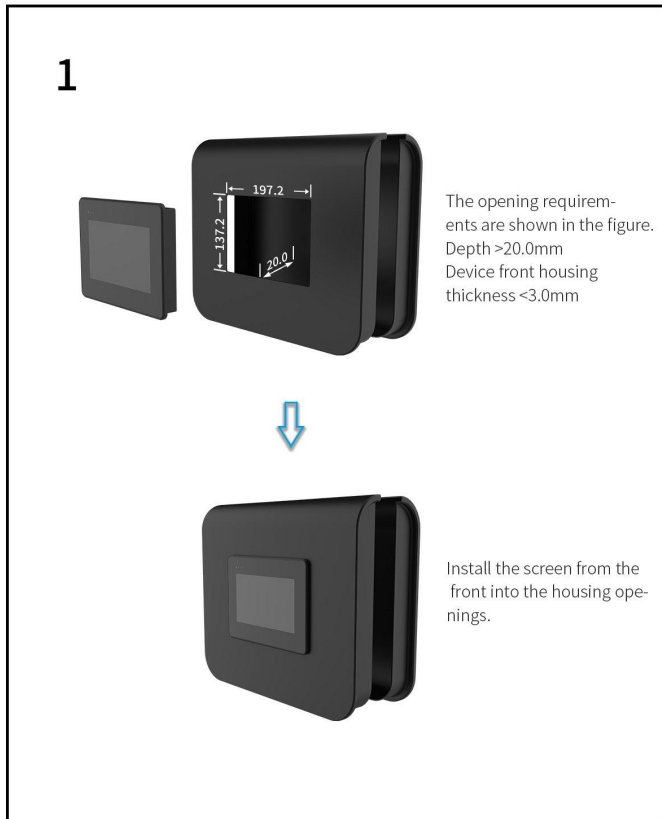
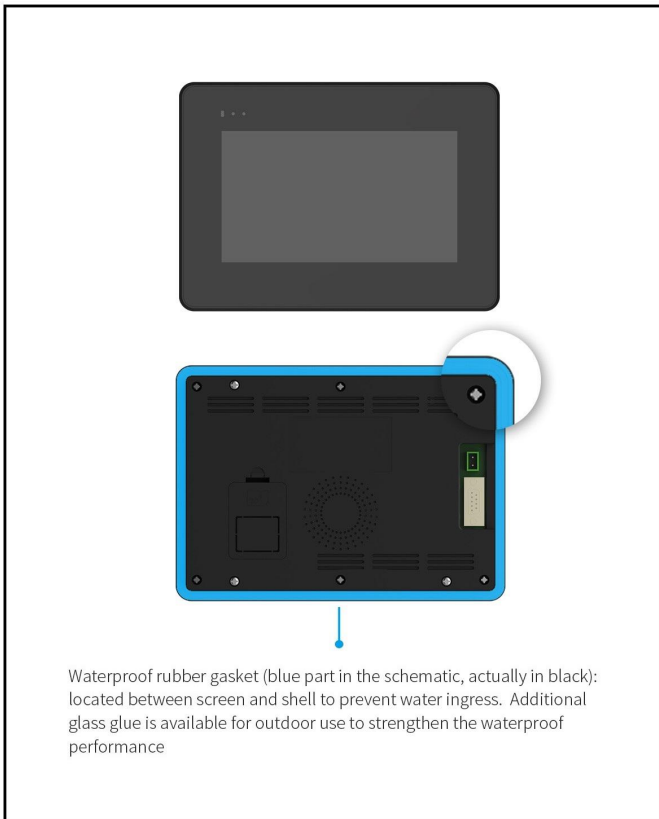
Definition	Pin#	Type	Description
VCC	1	P	Power Input
GND	2	P	GND

Model	Drawing	Scale	Unit	Drawn	Review	Date	Approval
DMT10600T070_39WTR (With CAN)	A 4	1:1	MM	DWIN			

1. Location hole is used as position reference.  
 2. Unmarked Tolerance is +/-0.3mm  
 Active area is marked in Dash lines



# Installation Schematic



## Revision Records

Rev	Revise Date	Content	Editor
00	2022-12-12	First Edition	YML
01	2024-04-15	Interface change, adding CAN interface	YML

Please contact us if you have any questions about the use of this document or our products, or if you would like to know the latest information about our products:

Customer service Tel: +86-400-018-9008

Customer service E-mail: [dwinhmi@dwin.com.cn](mailto:dwinhmi@dwin.com.cn)

Website: [www.dwin-global.com](http://www.dwin-global.com)

DWIN Developer Forum: <https://forums.dwin-global.com/index.php/forums>

Thank you all for continuous support of DWIN, and your approval is the driving force of our progress!

### Important Disclaimer

DWIN reserves the right to make any changes to product designs without prior notice.

Customers should ensure strictly adhering to all the relevant standards and requirements during the product application process, including but not limited to functional safety, information security, and regulatory provisions.

DWIN shall not bear any joint and several liability for any consequences that may arise from customers' adoption of DWIN products. In particular, for risks that may lead to significant property losses, environmental hazards, personal injury, or even death, especially in high-risk application areas such as military applications, flammable and explosive places, and life-saving medical equipment, customers should independently assess the risks and take corresponding preventive and protective measures. DWIN shall not bear any relevant responsibility.