

# DMT10600T070\_36WTC



## Features:

- Industrial Linux intelligent display terminal based on T113, running Linux5.4 operating system.
- 7.0-inch, 1024\*600 pixels resolution, 16.7M colors, IPS-TFT-LCD, wide viewing angle, Capacitive Touch, with shell.
- Adopt QT environment for secondary development.
- Available for multi-language, vector font library, picture library, video library and audio library.
- Compatible with network cable connection with PC to download update project.
- Available for RS232, RS485, CAN and Ethernet ports to connect and communicate with external devices.

### ● Master Control Parameters

| Properties        | Parameters                         |
|-------------------|------------------------------------|
| Motherboard Level | Industrial                         |
| CPU               | Dual-core ARM Cortex™-A7 Processor |
| OS                | Linux5.4                           |
| FLASH             | 8GBytes EMMC                       |
| RAM               | 128MBytes DDR3                     |

### ● Display Parameters

| Properties         | Parameters              | Description                                                                                                            |
|--------------------|-------------------------|------------------------------------------------------------------------------------------------------------------------|
| Color              | 16.7M(16777216)colors   | 24 bit color 8R8G8B                                                                                                    |
| Panel Type         | IPS                     | IPS process, TFT LCM with wide viewing angle                                                                           |
| Viewing Angle      | 85/85/85/85 (L/R/U/D)   | Best view: symmetrical                                                                                                 |
| Active Area (A.A.) | 154.2mm (W)*85.88mm (H) | -                                                                                                                      |
| View Area (V.A.)   | 155.0mm (W)*87.5mm (H)  | -                                                                                                                      |
| Resolution         | 1024x600                | Available for 0°/90°/180°/270°rotated display                                                                          |
| Backlight          | LED                     | ≥30000H(time of the brightness decaying to 50% on the condition of continuous working with the maximum brightness)     |
| Brightness         | 250nit                  | 100 levels adjustment(It's not recommended to set brightness to 1%~30% of the maximum, which may lead to LCD flicker.) |

Note: You can use dynamic screen saver wallpapers to avoid afterimages caused by fixed page display for a long time.

### ● Voltage & Current

| Properties        | Conditions                | Min | Typ  | Max | Unit |
|-------------------|---------------------------|-----|------|-----|------|
| Power Voltage     | -                         | 8.0 | 12.0 | 23  | V    |
| Operation Current | VCC = +12V, Backlight on  | -   | 270  | -   | mA   |
|                   | VCC = +12V, Backlight off | -   | 120  | -   | mA   |

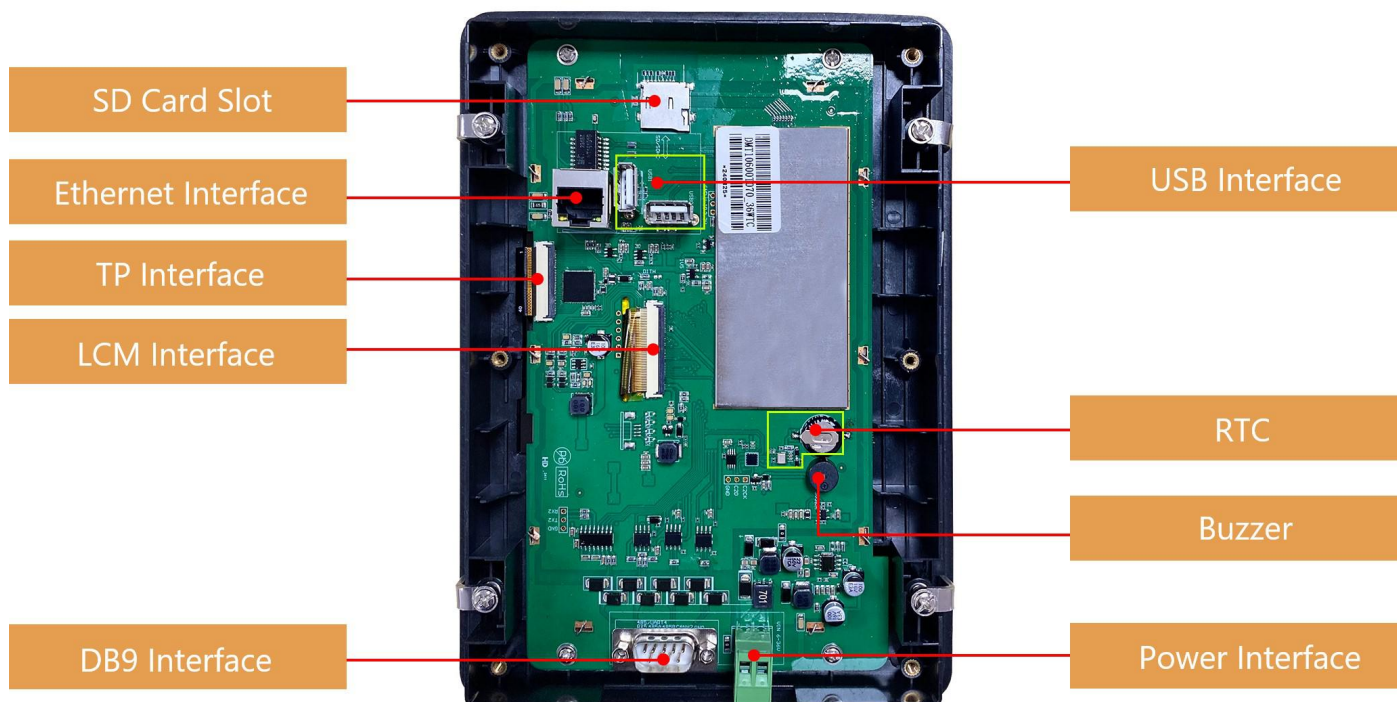
Recommended power supply: 12V 1A DC

### ● Reliability Test

| Properties          | Conditions                    | Min | Typ | Max | Unit |
|---------------------|-------------------------------|-----|-----|-----|------|
| Working Temperature | 60%RH at 12V voltage          | -20 | 25  | 70  | ℃    |
| Storage Temperature | -                             | -30 | 25  | 80  | ℃    |
| Working Humidity    | 25℃                           | 10% | 60% | 90% | RH   |
| Conformal coating   | Yes                           |     |     |     |      |
| ESD                 | Air discharge ±8KV            |     |     |     |      |
| EFT                 | Group pulse interference ±2KV |     |     |     |      |

**Peripheral and Interfaces**

| Properties         | Parameters  | Description                                             |
|--------------------|-------------|---------------------------------------------------------|
| COM                | 1-way RS232 | UART5                                                   |
|                    | 1-way RS485 | UART4                                                   |
| CAN Interface      | 2-way       | Located within the DB9 interface                        |
| USB Interface      | 2-way       | HOST*2                                                  |
| SD Card Slot       | 1-way       | Drawer type card slot                                   |
| Ethernet Interface | 1-way       | 10/100Mbps                                              |
| RTC                | Built-in    | Super-capacitor RTC. Accuracy: $\pm 20\text{ppm}$ @25°C |
| Buzzer             | Built-in    | 3V passive buzzer                                       |


**Disclaimer:**

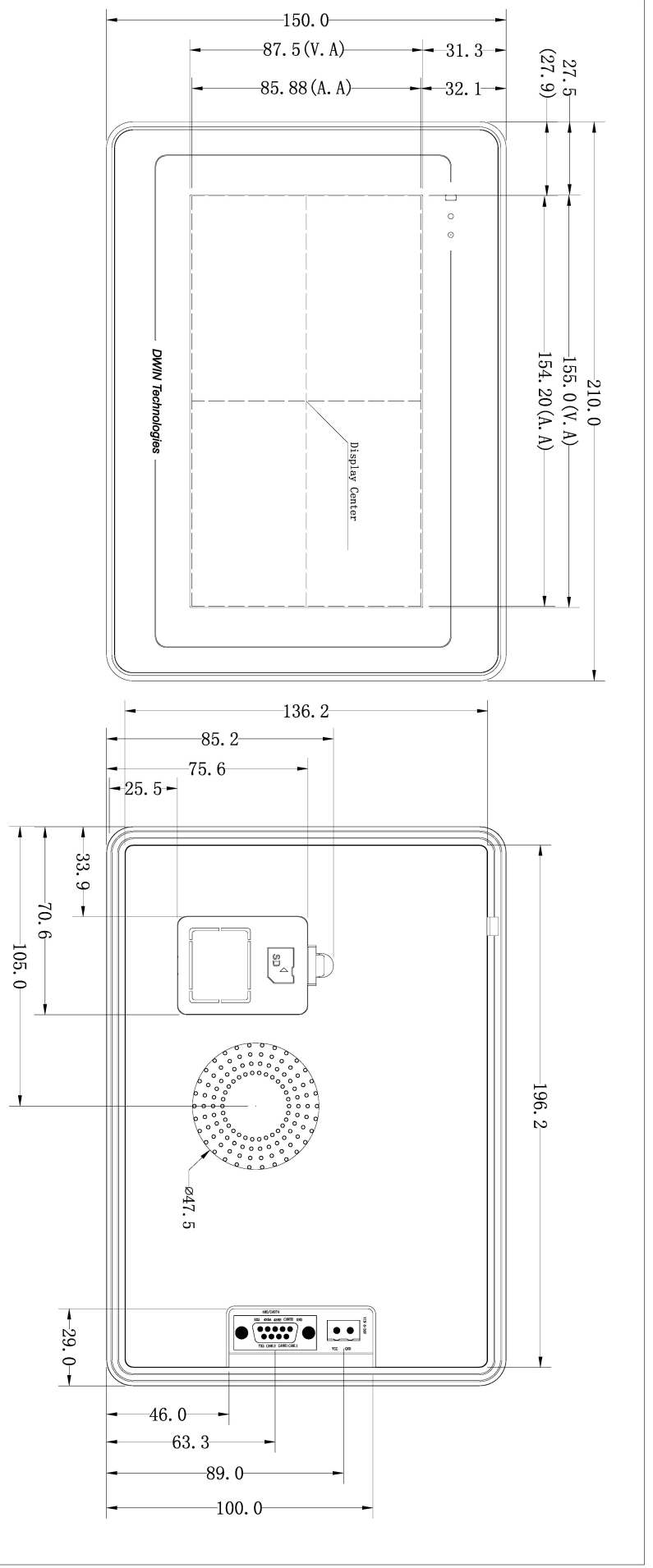
There are multiple parallel raw materials coexisting to guarantee the stable supply. If customers have particular raw material preferences or requirements, please contact the sales personnel.

**● Interface Parameters**

| Properties           | Conditions                        | Min   | Typ    | Max     | Unit |
|----------------------|-----------------------------------|-------|--------|---------|------|
| Baud Rate            | User-defined                      | 3150  | 115200 | 3225600 | bps  |
| Output Voltage (TXD) | Output 1                          | -     | -5.0   | -3.0    | V    |
|                      | Output 0                          | 3.0   | 5.0    | -       | V    |
| Input Voltage (RXD)  | Input 1                           | -15.0 | -5.0   | -       | V    |
|                      | Input 0                           | -     | 5.0    | 15.0    | V    |
| Interface            | RS232*1, RS485*1, CAN*2           |       |        |         |      |
| Socket               | 2Pin-5.08mm Socket, DB9 interface |       |        |         |      |

**● Packing Capacity & Dimension**

| Packing Capacity |                            |       |                |               |
|------------------|----------------------------|-------|----------------|---------------|
| Model            | Size                       | Layer | Quantity/Layer | Quantity(Pcs) |
| Carton1:         | 220mm(L)*160mm(W)*47mm (H) | -     | -              | -             |
| Carton2:         | 250mm(L)*200mm(W)*80mm (H) | 2     | 1              | 2             |
| Carton3:         | 320mm(L)*270mm(W)*80mm (H) | -     | -              | -             |
| Carton4:         | 450mm(L)*350mm(W)*300mm(H) | 1     | 16             | 16            |
| Carton5:         | 600mm(L)*450mm(W)*300mm(H) | 1     | 30             | 30            |



| Definition | Pin# | Type | Description |
|------------|------|------|-------------|
| RX5        | 1    | I    | UART5 DIN   |
| 435A       | 2    | A+   | RS485+      |
| 435B       | 3    | B-   | RS485-      |
| CAN#2      | 4    | H    | CAN#        |
| GND        | 5    | P    | UART5 GND   |
| TX5        | 6    | O    | DO#T        |
| CAN#2      | 7    | L    | CAN#        |
| CAN#1      | 8    | H    | CAN#        |
| CAN#1      | 9    | L    | CAN#        |

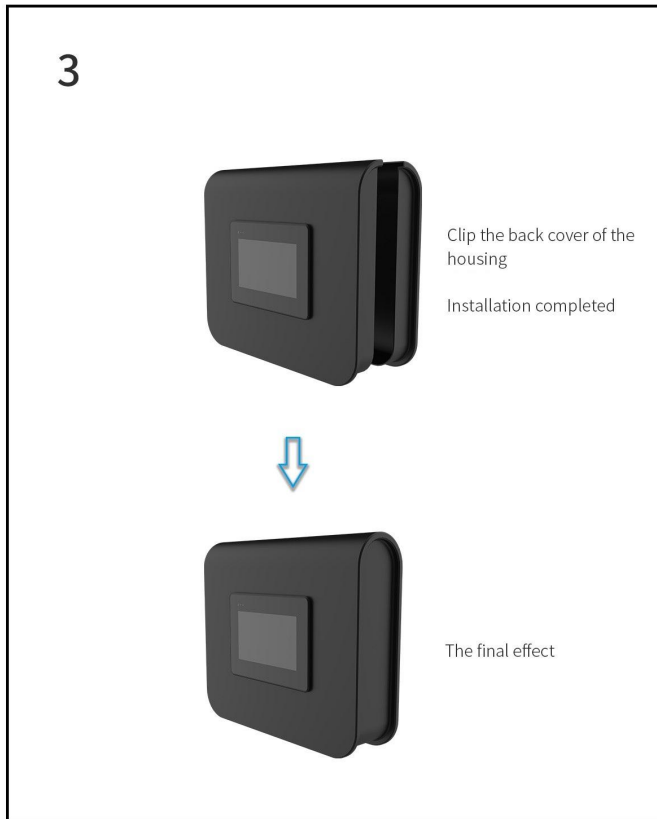
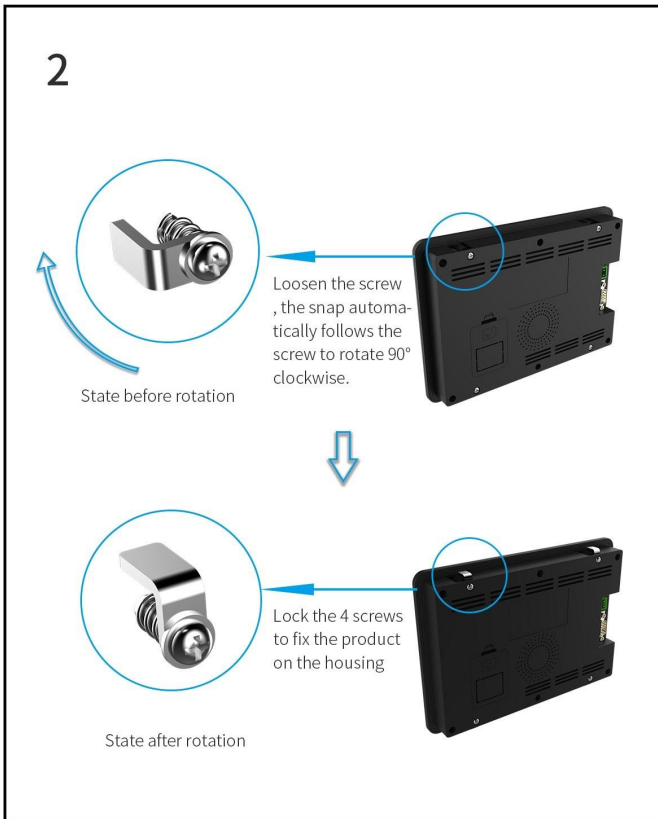
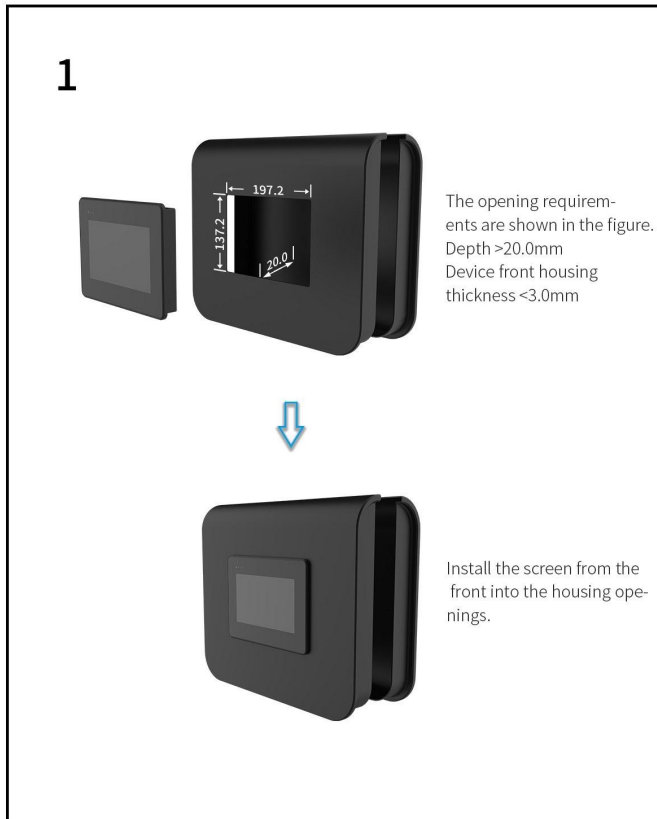
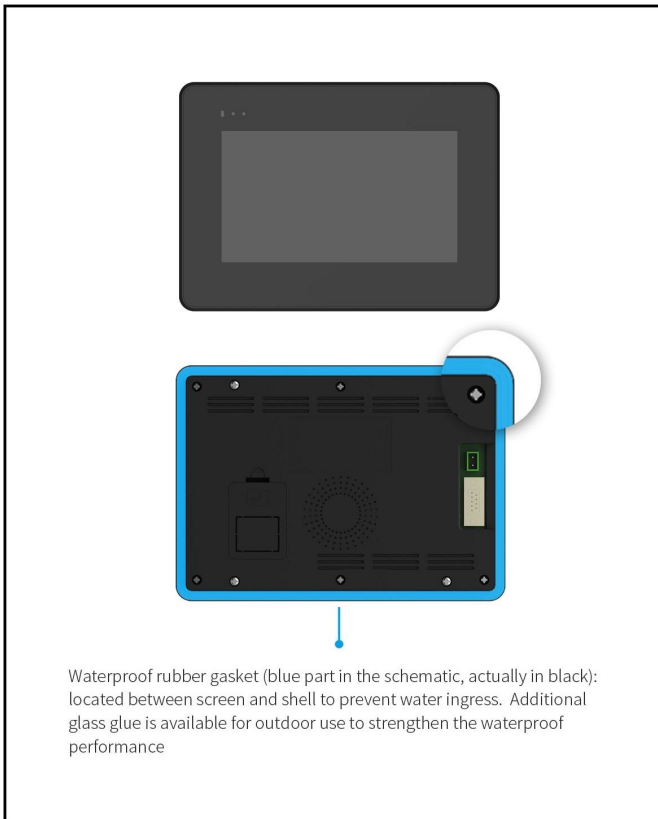
| Definition | Pin# | Type | Description |
|------------|------|------|-------------|
| VCC        | 1    | P    | Power Input |
| GND        | 2    | P    | GND         |

| Model   | DMT10600T070_36WTC (With CAN) |          |      |
|---------|-------------------------------|----------|------|
| Drawing | A 4                           | Drawn    | DWIN |
| Scale   | 1:1                           | Review   |      |
| Unit    | MM                            | Approval |      |

1. Location hole is used as position reference.  
2. Unmarked Tolerance is +/-0.3mm  
Active area is marked in Dash Lines

Beijing DWIN Technology Co., Ltd

# Installation Schematic



**Revision records**

| <b>Rev</b> | <b>Revise Date</b> | <b>Content</b>                         | <b>Editor</b> |
|------------|--------------------|----------------------------------------|---------------|
| 00         | 2022-12-12         | First Edition                          | YML           |
| 01         | 2024-04-15         | Interface change, adding CAN interface | YML           |

Please contact us if you have any questions about the use of this document or our products, or if you would like to know the latest information about our products:

Customer service Tel: +86-400-018-9008

Customer service E-mail: [dwinhmi@dwin.com.cn](mailto:dwinhmi@dwin.com.cn)

Website: [www.dwin-global.com](http://www.dwin-global.com)

DWIN Developer Forum: <https://forums.dwin-global.com/index.php/forums>

Thank you all for continuous support of DWIN, and your approval is the driving force of our progress!

**Important Disclaimer**

DWIN reserves the right to make any changes to product designs without prior notice.

Customers should ensure strictly adhering to all the relevant standards and requirements during the product application process, including but not limited to functional safety, information security, and regulatory provisions.

DWIN shall not bear any joint and several liability for any consequences that may arise from customers' adoption of DWIN products. In particular, for risks that may lead to significant property losses, environmental hazards, personal injury, or even death, especially in high-risk application areas such as military applications, flammable and explosive places, and life-saving medical equipment, customers should independently assess the risks and take corresponding preventive and protective measures. DWIN shall not bear any relevant responsibility.