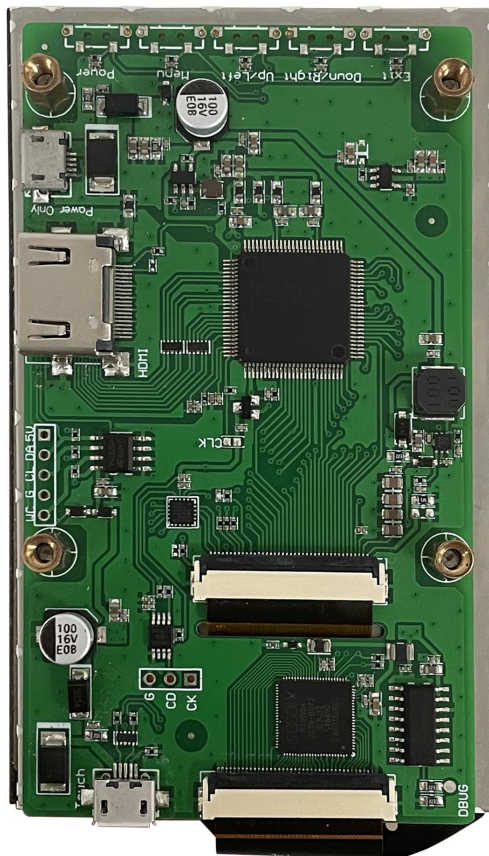


# HDW043\_001L

4.3 Inch, 480xRGBx800, 16.7M Colors, IPS screen, Capacitive touch



DWIN Technology

## ● Display

Item	Parameter	Description
Color	16.7M (16777216) colors	24 bit color 8R8G8B
Panel Type	IPS	IPS process TFT LCM ,wide viewing angle
Viewing Angle	85/85/85/85 (L/R/U/D)	Best View: symmetrical
Active Area (A.A.)	93.6mm (W) * 56.2mm (H)	480*800
View Area (V.A.)	94.0mm (W) * 56.6mm (H)	480*800
Resolution	480x800	-
Backlight	LED	>20000 hours (Time of the brightness decaying to 50% on the condition of continuous working with the maximum brightness)
Brightness	250nit	-

Note: You can use dynamic screen saver wallpapers to avoid afterimages caused by fixed page display for a long time.

## ● Voltage & Current

Item	Conditions	Min	Typ	Max	Unit
Power Voltage	-	3.6	5.0	6.0	V
Operation Current	VCC = +5V, Backlight on	-	-	-	mA
	VCC = +5V, Backlight off	-	-	-	mA

Recommended power supply: 5V 1A DC

## ● Reliability Test

Item	Conditions	Min	Typ	Max	Unit
Working Temperature	60%RH at 5V voltage	-10	25	60	°C
Storage Temperature	-	-20	25	70	°C
Working Humidity	25°C	10%	60%	90%	RH
Protective Paint	-	-	None	-	-

## ● Interface

Item	Description
Socket	HDMI interface
USB Interface	Yes
SD Card Slot	None

## ● Peripheral

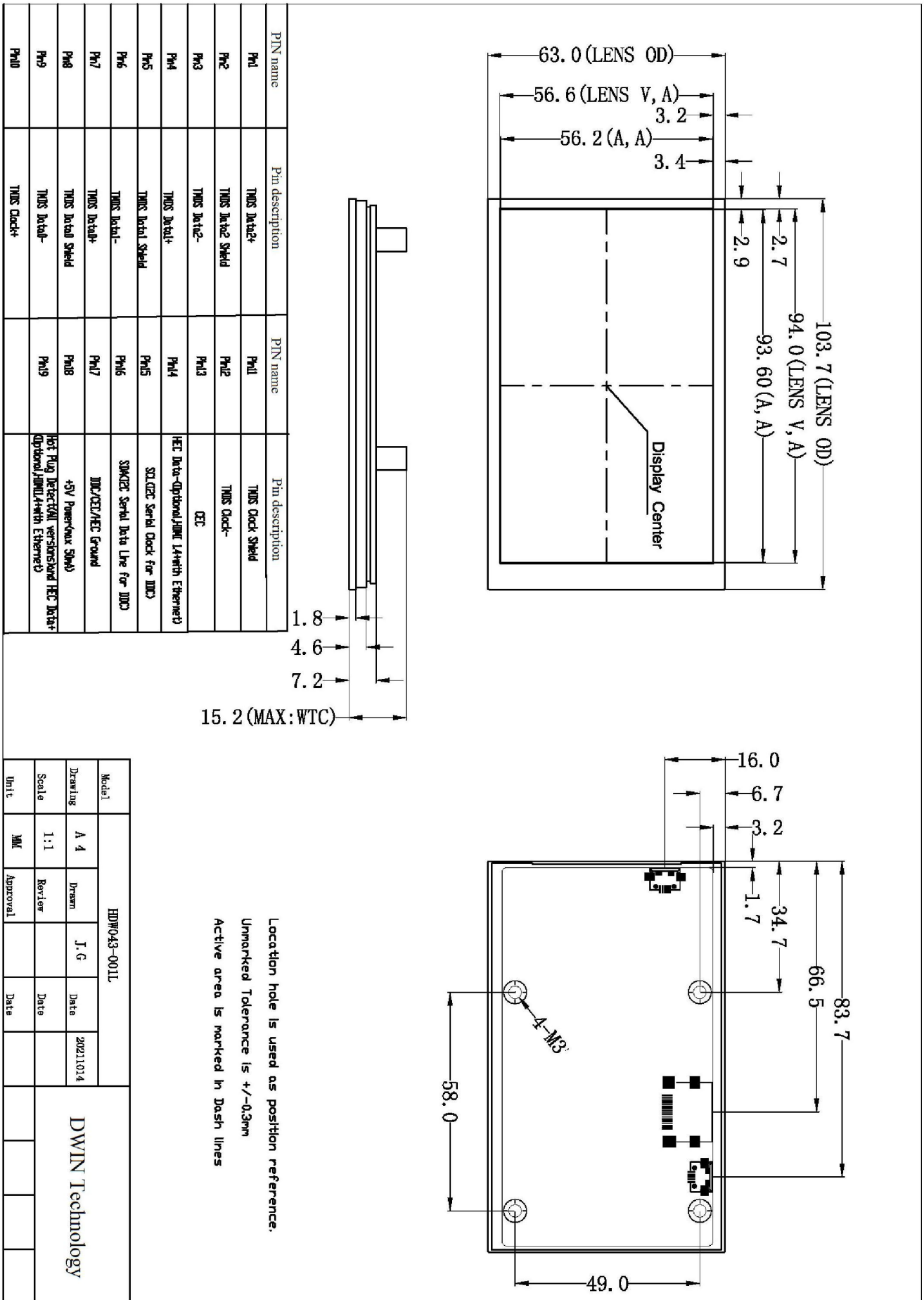
Peripheral	Description
Peripheral	Capacitive touch panel

● **Packing Capacity & Dimension**

Dimension				
<b>Dimension</b>	103.7(W)* 63.0(H)*15.20(T)mm			
<b>Net Weight</b>	90g			
Packing Capacity				
Model	Size	Layer	Quantity/Layer	Quantity(Pcs)
<b>Carton1:</b>	220mm(L)*160mm(W)*47mm (H)	1	2	2
<b>Carton2:</b>	250mm(L)*200mm(W)*80mm (H)	2	2	4
<b>Carton3:</b>	320mm(L)*270mm(W)*80mm (H)	2	4	8
<b>Carton4:</b>	450mm(L)*350mm(W)*300mm(H)	2	30	60
<b>Carton5:</b>	600mm(L)*450mm(W)*300mm(H)	2	60	120

Disclaimer: The product design is subject to alternation and improvement without prior notice.

DWIN Technologies Technical Document



Pin name	Pin description	Pin name	Pin description
PH1	TMS Detect+	PH11	TMS Clock Shield
PH2	TMS Detect Shield	PH12	TMS Clock-
PH3	TMS Detect-	PH13	CEC
PH4	TMS Detect+	PH14	HEC Data-Optional/JMI (A with Ethernet)
PH5	TMS Detect Shield	PH15	SIG/CEC Serial Clock for I2C3
PH6	TMS Detect-	PH16	SOM/CEC Serial Data Line for I2C3
PH7	TMS Detect+	PH17	I2C/CEC/HEC Ground
PH8	TMS Detect Shield	PH18	+5V Power/Vaux (50mA)
PH9	TMS Detect-	PH19	Hot Plug Detect/MI version/Standard HEC Detect-Optional/JMI (A with Ethernet)
PH10	TMS Clock+		

15.2 (MAX: WTC)

Location hole is used as position reference.  
 Unmarked Tolerance is +/-0.3mm  
 Active area is marked in Dash lines

Model		HDW043-001L	
Drawing	A 4	Drawn	J.G
Scale	1:1	Reviewer	
Unit	MM	Approval	
Date		Date	20211014
DWIN Technology			

**Record of Revision**

<b>Ver</b>	<b>Revise Date</b>	<b>Content</b>	<b>Editor</b>
00	2022-12-15	First Edition	Kaya
01	2024-05-13	Update Temperature Range	YML

Please contact us if you have any questions about the use of this document or our products, or if you would like to know the latest information about our products:

Customer service Tel: +86-400-018-9008

Customer service E-mail: [dwinhmi@dwin.com.cn](mailto:dwinhmi@dwin.com.cn)

Website: [www.dwin-global.com](http://www.dwin-global.com)

DWIN Developer Forum: <https://forums.dwin-global.com/index.php/forums>

Thank you all for continuous support of DWIN, and your approval is the driving force of our progress!

**Important Disclaimer**

DWIN reserves the right to make any changes to product designs without prior notice.

Customers should ensure strictly adhering to all the relevant standards and requirements during the product application process, including but not limited to functional safety, information security, and regulatory provisions.

DWIN shall not bear any joint and several liability for any consequences that may arise from customers' adoption of DWIN products. In particular, for risks that may lead to significant property losses, environmental hazards, personal injury, or even death, especially in high-risk application areas such as military applications, flammable and explosive places, and life-saving medical equipment, customers should independently assess the risks and take corresponding preventive and protective measures. DWIN shall not bear any relevant responsibility.