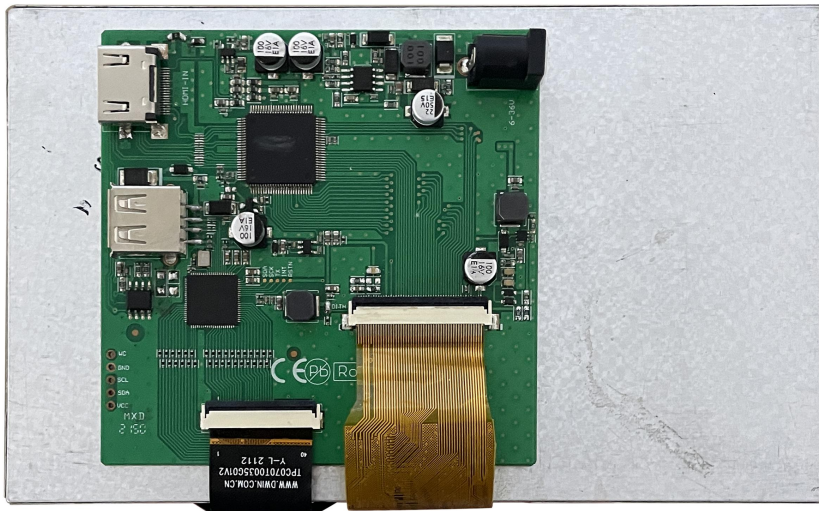


HDW070_008LZ01

7 Inch, 800×RGB×480, 16.7M Colors, TN screen

CTP, HDMI interface display



Record of Revision

Ver	Revise Date	Content	Editor
00	2022-12-07	First Edition	Kaya

● Display

Item	Parameter	Description
Color	16.7M(16777216)colors	24 bit color 8R8G8B
Panel Type	TN	TN TFT LCM, normal viewing angle
Viewing Angle	70/70/50/70(L/R/U/D)	-
Active Area (A.A.)	154.08mm(W) ×85.92mm(H)	800x480
View Area (V.A.)	154.08mm(W) ×85.92mm(H)	800x480
Resolution	800x480	Support 0°/90°/180°/270°rotated display
Backlight	LED	≥20000H(Continuous working with maximum brightness, time of the brightness decays to 50%)
Brightness	800nit	-

Note:You can use dynamic screen saver wallpapers to avoid afterimages caused by fixed page display for a long time.

● Voltage & Current

Item	Description	
Power Voltage	6~36V, typical value of 12V	
Current parameters	640mA	VCC=6V (Minimum starting voltage)
	210mA	VCC=12V (Standard supply voltage)
	130mA	VCC=36V (Maximum supply voltage)

Recommended power supply: 12V 1A DC

● Reliability Test

Item	Conditions	Min	Typ	Max	Unit
Working Temperature	60%RH at 12V voltage	-20	25	70	℃
Storage Temperature	-	-30	25	80	℃
Working Humidity	25℃	10%	60%	90%	RH
Electrostatic discharge test	Contact discharge	-	±6KV	-	-
	Air discharge	-	±8KV	-	-
EFT		-	±2KV	-	-

● Interface

Item	Description
Socket	Power interface, HDMI interface
USB Interface	Yes (Connect USB capacitive touch screen)
SD Card Slot	None

● Peripheral

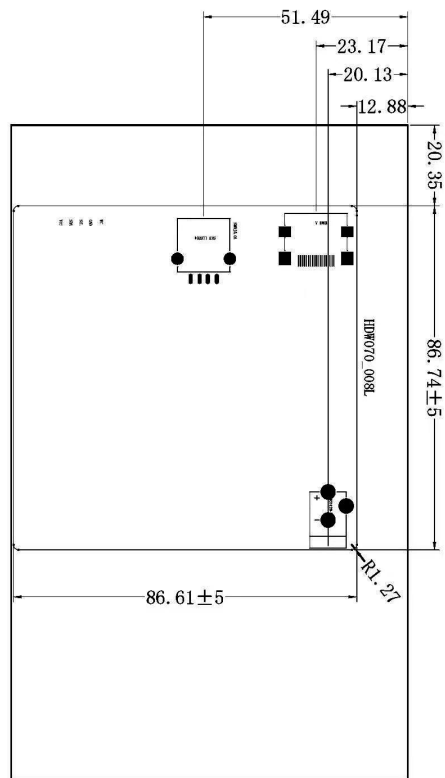
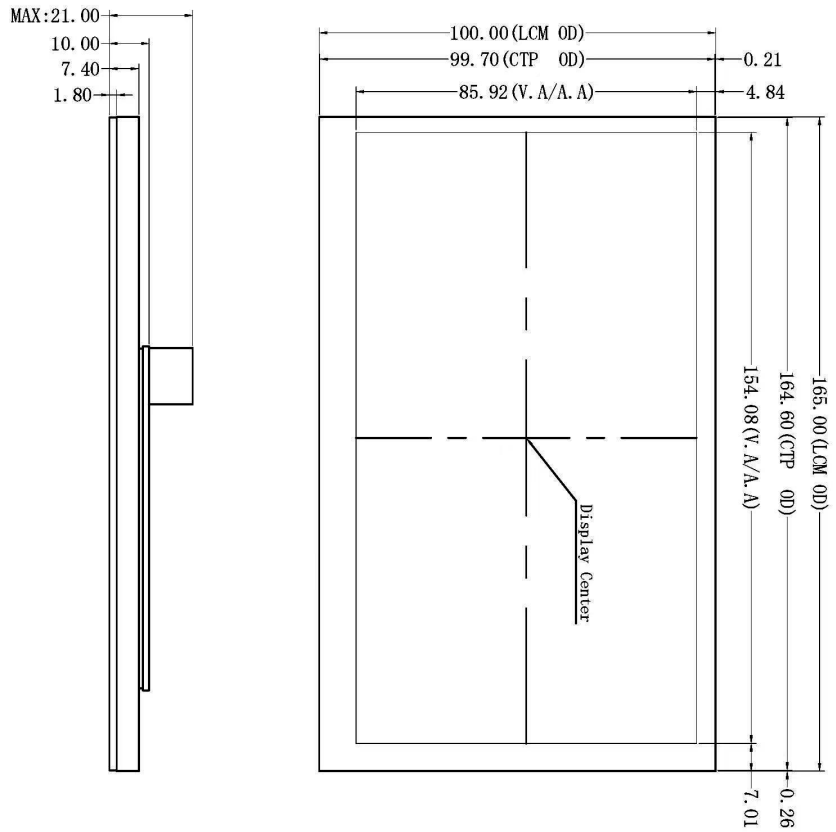
Peripheral	Capacitive touch panel
------------	------------------------

- **Packing Capacity & Dimension**

Dimension				
Dimension	165.0(W)×100.0(H)×18.7(T)mm			
Net Weight	245g			
Packing Capacity				
Model	Size	Layer	Quantity/Layer	Quantity(Pcs)
Carton1:	220mm(L)×160mm(W)×47mm (H)	-	-	-
Carton2:	250mm(L)×200mm(W)×80mm (H)	2	1	2
Carton3:	320mm(L)×270mm(W)×80mm (H)	2	2	4
Carton4:	450mm(L)×350mm(W)×300mm(H)	1	20	20
Carton5:	600mm(L)×450mm(W)×300mm(H)	1	34	34

Disclaimer: The product design is subject to alternation and improvement without prior notice.

DWIN Technologies Technical Document



HDWT	HDWT	HDWT	HDWT
Pin1	TMS Data2+	Pin11	TMS Clock Shield
Pin2	TMS Data2 Shield	Pin12	TMS Clock-
Pin3	TMS Data2-	Pin13	CEC
Pin4	TMS Data1+	Pin14	HBC Data- (Optional, I2C 1-wire Bitstream)
Pin5	TMS Data1 Shield	Pin15	SCL (I2C Serial Clock for I2C)
Pin6	TMS Data1-	Pin16	SDA (I2C Serial Data Line for I2C)
Pin7	TMS Data0+	Pin17	DDC/CEC/HBC Ground
Pin8	TMS Data0 Shield	Pin18	+5V Power (max 50mA)
Pin9	TMS Data0-	Pin19	Hot Plug Detect (All versions) and HBC Data- (Optional, I2C 1-wire Bitstream)
Pin10	TMS Clock+		

1. Location hole is used as position reference.
 2. Unmarked Tolerance is +/-0.3mm
- Active area is marked in Dash lines

Model		HDW070-008LZ01		DWIN Technologies	
Drawing	A 4	Drawn	J.G	Date	2022.04.12
Scale	1:1	Review		Date	
Unit	MM	Approval		Date	