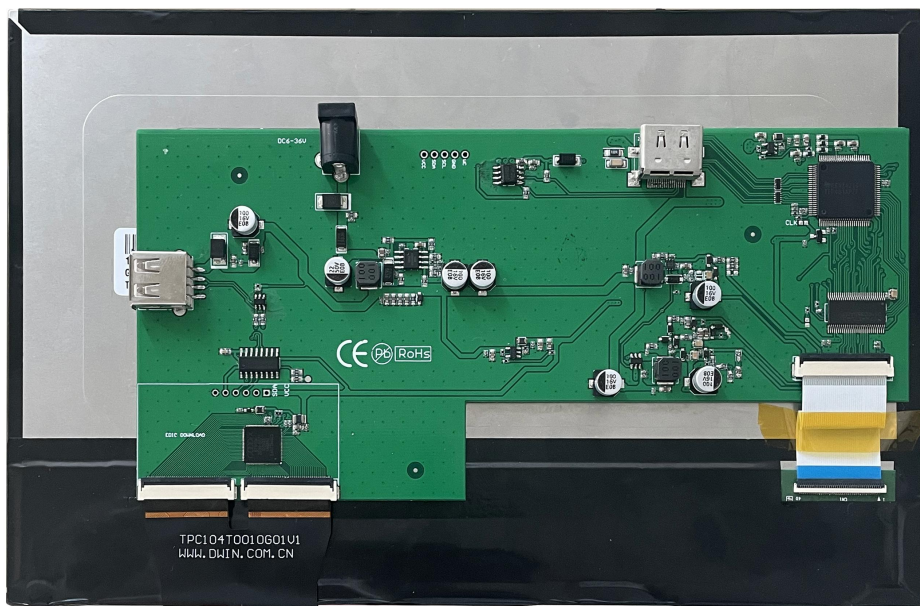


# HDW101\_004L

**10.1 Inch, 1280xRGBx800, 16.7M Colors, IPS screen, CTP**



**Record of Revision**

Ver	Revise Date	Content	Editor
00	2022-12-22	First Edition	Kaya

## ● Display

Item	Parameter	Description
Color	16.7M(16777216)colors	24 bit color 8R8G8B
Panel Type	IPS	IPS TFT LCM ,wide viewing angle
Viewing Angle	85/85/85/85(L/R/U/D)	-
Active Area (A.A.)	216.96mm(W)x135.60mm(H)	1280×800
View Area (V.A.)	217.96mm(W)x136.60mm(H)	1280×800
Resolution	1280×800	Support 0°/90°/180°/270°rotated display
Backlight	LED	≥30000H (Continuous working with maximum brightness,time of the brightness decays to 50%)
Brightness	300nit	-

Note:You can use dynamic screen saver wallpapers to avoid afterimages caused by fixed page display for a long time.

## ● Voltage & Current

Item	Conditions	Min	Typ	Max	Unit
Power Voltage	-	6	12	36	V

## ● Reliability Test

Item	Conditions	Min	Typ	Max	Unit
Working Temperature	60%RH at 12V voltage	-10	25	50	℃
Storage Temperature	-	-20	25	60	℃
Working Humidity	25℃	10%	60%	90%	RH

## ● Interface

Item	Conditions	Min	Typ	Max	Unit
Socket	Power interface, HDMI interface				
USB Interface	Yes				
SD Card Slot	None				

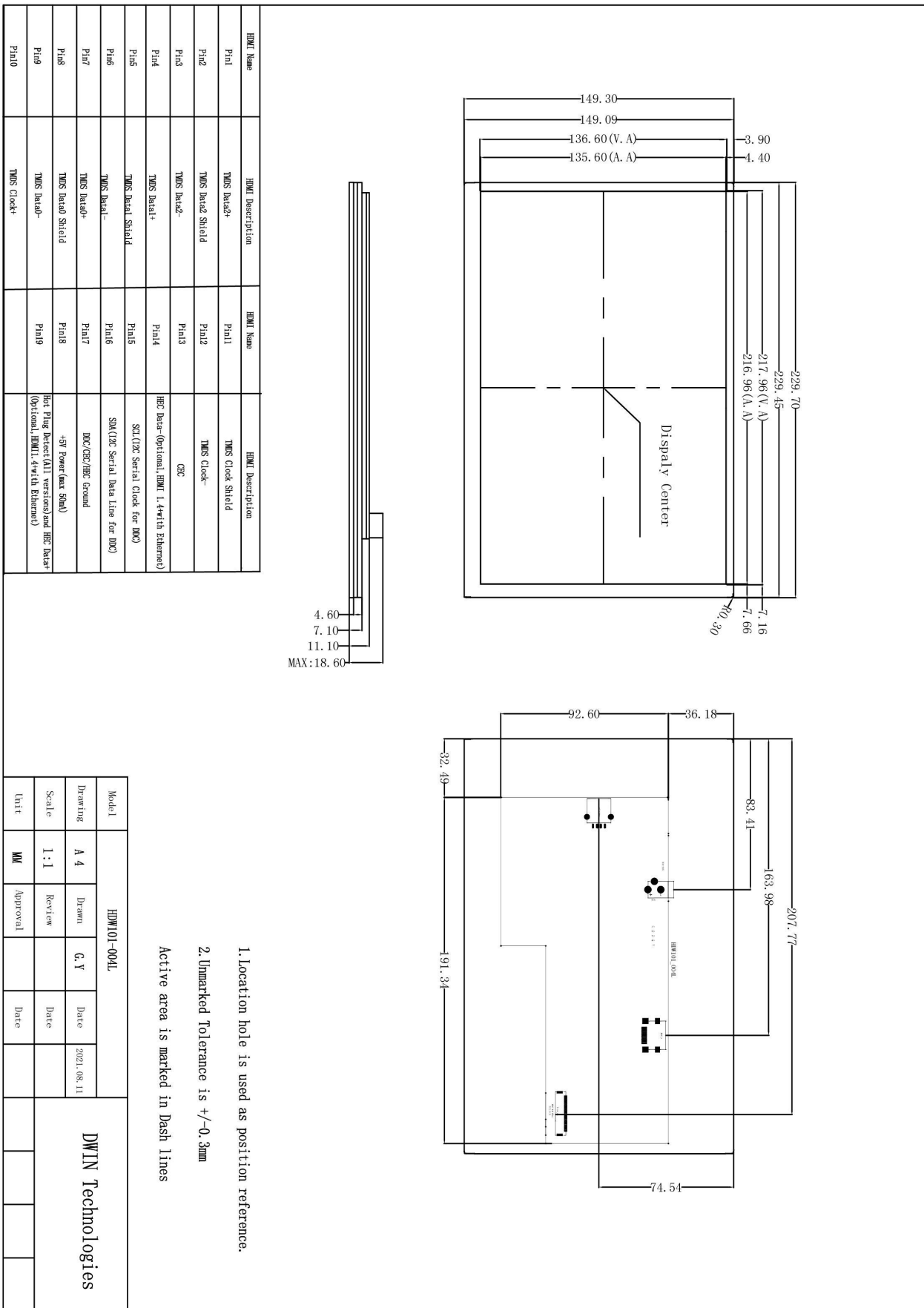
## ● Peripheral

Peripheral	Capacitive touch panel
------------	------------------------

## ● Packing Capacity & Dimension

Dimension				
Dimension	229.70(W)x149.30(H)x18.60(T)mm			
Net Weight	425g			
Packing Capacity				
Model	Size	Layer	Quantity/Layer	Quantity(Pcs)
Carton1:	220mm(L)×160mm(W)×47mm (H)	-	-	-
Carton2:	250mm(L)×200mm(W)×80mm (H)	-	-	-
Carton3:	320mm(L)×270mm(W)×80mm (H)	2	1	2
Carton4:	450mm(L)×350mm(W)×300mm(H)	1	10	10
Carton5:	600mm(L)×450mm(W)×300mm(H)	1	16	16

Disclaimer: The product design is subject to alternation and improvement without prior notice.



HDMI Name	HDMI Description	HDMI Name	HDMI Description
Pin1	TMS Data2+	Pin11	TMS Clock Shield
Pin2	TMS Data2 Shield	Pin12	TMS Clock-
Pin3	TMS Data2-	Pin13	CEC
Pin4	TMS Data1+	Pin14	HDC Data- (Optional, HDMI 1.4 with Ethernet)
Pin5	TMS Data1 Shield	Pin15	SD (12C Serial Clock for DDC)
Pin6	TMS Data1-	Pin16	SD (12C Serial Data Line for DDC)
Pin7	TMS Data0+	Pin17	DDC/CEC/HDC Ground
Pin8	TMS Data0 Shield	Pin18	+5V Power (max 50mA)
Pin9	TMS Data0-	Pin19	Hot Plug Detect (ATI versions) and HDC Data+ (Optional, HDMI 1.4 with Ethernet)
Pin10	TMS Clock+		

- 1. Location hole is used as position reference.
  - 2. Unmarked Tolerance is +/-0.3mm
- Active area is marked in Dash lines

Model	HDW101-004L			<b>DWIN Technologies</b>				
Drawing	A 4	Drawn	G, Y				Date	2021.08.11
Scale	1 : 1	Review					Date	
Unit	MM	Approval					Date	