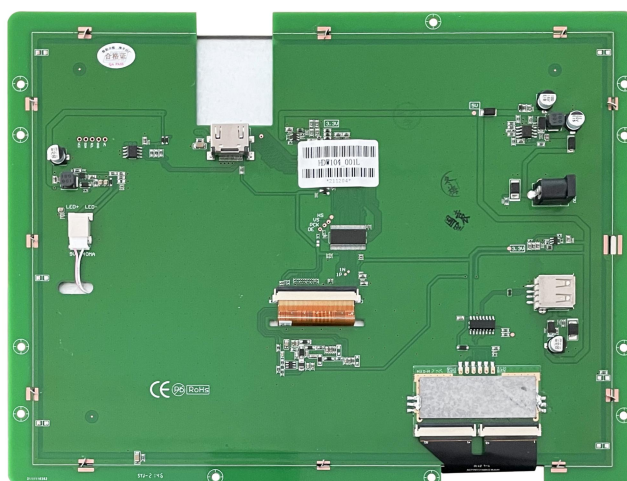


HDW104_001L

10.4 Inch, 1024xRGBx768, 16.7M Colors, IPS screen, CTP



Record of Revision

Ver	Revise Date	Content	Editor
00	2022-12-09	First Edition	Kaya

● Display

Item	Parameter	Description
Color	16.7M(16777216)colors	24 bit color 8R8G8B
Panel Type	IPS	High contrast, good color reproduction, wide viewing angle (typical value is 85/85/85/85)
Viewing Angle	85/85/85/85(L/R/U/D)	-
Active Area (A.A.)	210.20mm(W) × 158.55mm(H)	1024x768
View Area (V.A.)	210.20mm(W) × 158.55mm(H)	1024x768
Resolution	1024x768	Support 0°/90°/180°/270° rotated display
Backlight	LED	≥20000H (Continuous working with maximum brightness, time of the brightness decays to 50%)
Brightness	300nit	-

Note: You can use dynamic screen saver wallpapers to avoid afterimages caused by fixed page display for a long time.

● Voltage & Current

Item	Conditions	Min	Typ	Max	Unit
Power Voltage	-	6	12	36	V

● Reliability Test

Item	Conditions	Min	Typ	Max	Unit
Working Temperature	60%RH at 12V voltage	-20	25	70	°C
Storage Temperature	-	-30	25	80	°C
Working Humidity	25°C	10%	60%	90%	RH

● Interface

Item	Description
Socket	Power interface, HDMI interface
USB Interface	Yes
SD Card Slot	None

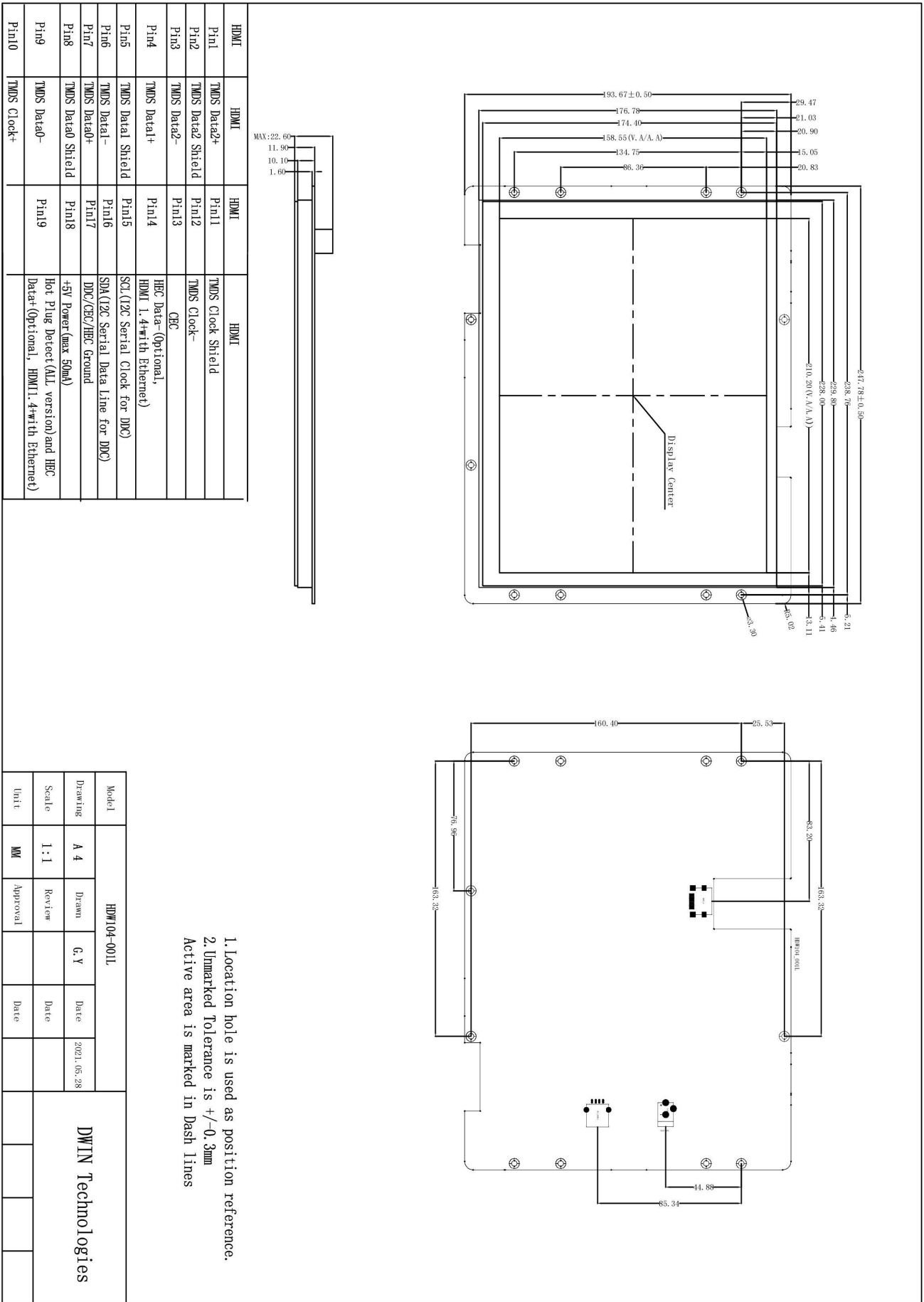
● Peripheral

Peripheral	Capacitive touch panel
------------	------------------------

● Packing Capacity & Dimension

Dimension				
Dimension	247.78(W) × 193.67(H) × 22.60(T)mm			
Net Weight	-			
Packing Capacity				
Model	Size	Layer	Quantity/Layer	Quantity(Pcs)
Carton1:	220mm(L) × 160mm(W) × 47mm(H)	-	-	-
Carton2:	250mm(L) × 200mm(W) × 80mm(H)	-	-	-
Carton3:	320mm(L) × 270mm(W) × 80mm(H)	2	1	2
Carton4:	450mm(L) × 350mm(W) × 300mm(H)	1	10	10
Carton5:	600mm(L) × 450mm(W) × 300mm(H)	1	16	16

Disclaimer: The product design is subject to alternation and improvement without prior notice.



1. Location hole is used as position reference.
 2. Unmarked Tolerance is +/-0.3mm
- Active area is marked in Dash lines