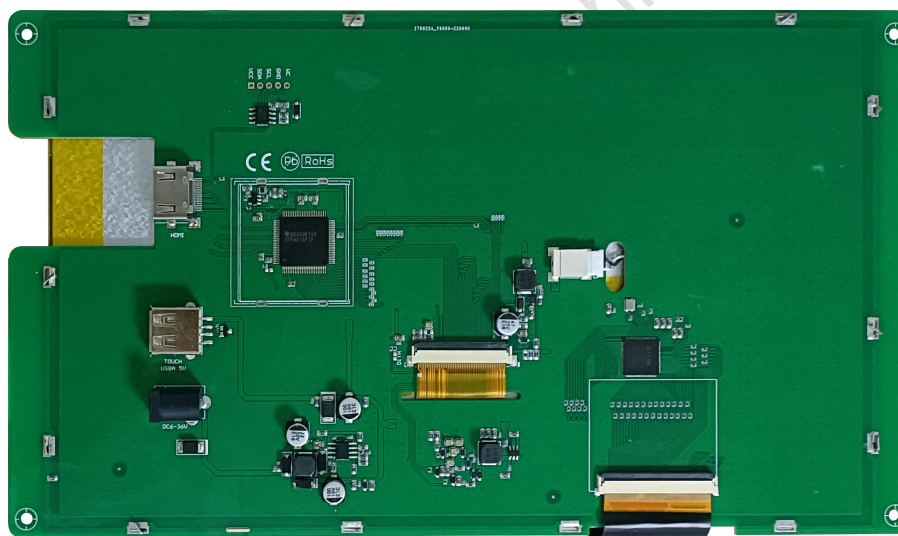


HDW101_001LZ09

10.1 Inch, 1024xRGBx600, 16.7M Colors, IPS screen

CTP, HDMI interface display



Record of Revision

Ver	Revise Date	Content	Editor
00	2022-12-14	First Edition	Kaya

● Display

Item	Parameter	Description
Color	16.7M(16777216)colors	24 bit color 8R8G8B
Panel Type	IPS	IPS TFT LCM ,wide viewing angle
Viewing Angle	85/85/85/85 (L/R/U/D)	Best View: symmetrical
Active Area (A.A.)	222.7mm(W)x125.3mm(H)	1024x600
View Area (V.A.)	222.7mm(W)x125.3mm(H)	1024x600
Resolution	1024x600	Support 0°/90°/180°/270°rotated display
Backlight	LED	≥20000H (Continuous working with maximum brightness, time of the brightness decays to 50%)
Brightness	500nit	-

Note: You can use dynamic screen saver wallpapers to avoid afterimages caused by fixed page display for a long time.

● Voltage & Current

Item	Description	
Power Voltage	7~36V, typical value of 12V	
Current parameters	860mA	VCC=7V (Minimum starting voltage)
	480mA	VCC=12V (Standard supply voltage)
	230mA	VCC=36V (Maximum supply voltage)

Recommended power supply: 12V 1A DC

● Reliability Test

Item	Conditions	Min	Typ	Max	Unit
Working Temperature	60%RH at 12V voltage	-20	25	70	℃
Storage Temperature	-	-30	25	80	℃
Working Humidity	25℃	10%	60%	90%	RH

● Interface

Item	Description
Socket	Power interface, HDMI interface
USB Interface	Yes (Capacitive touch screen can be used after external USB connection)
SD Card Slot	None

● Peripheral

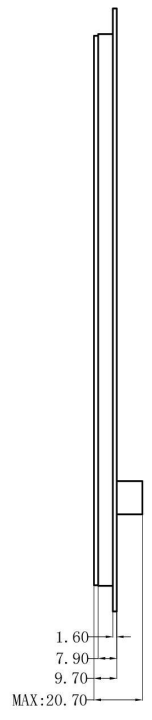
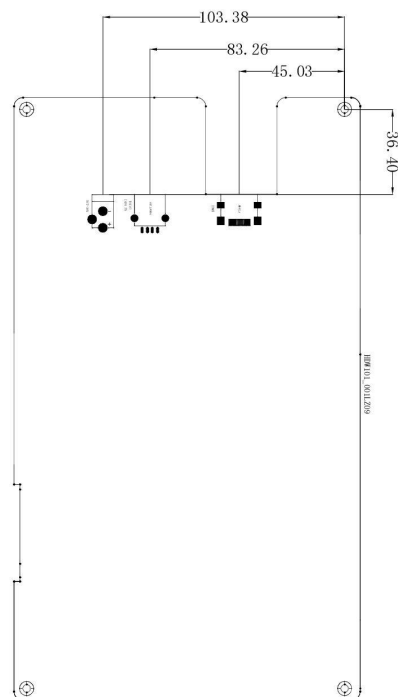
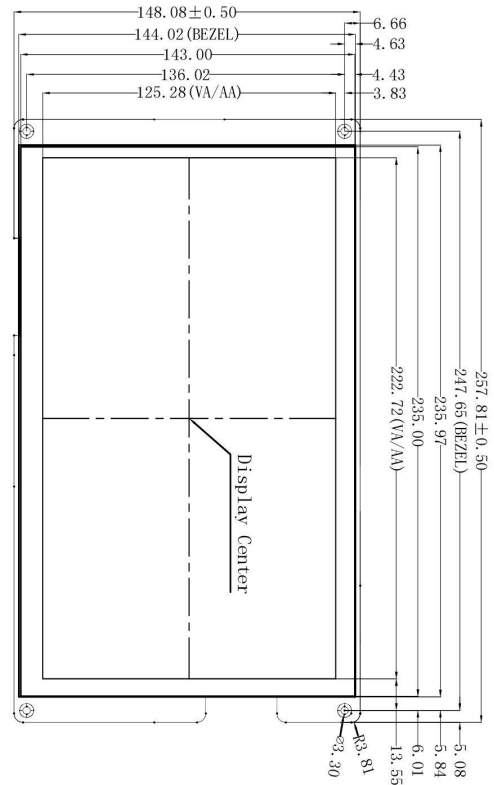
Peripheral	Capacitive touch panel
------------	------------------------

● **Packing Capacity & Dimension**

Dimension				
Dimension	257.8(W)×148.1(H)×20.7(T)mm			
Net Weight	640g			
Packing Capacity				
Model	Size	Layer	Quantity/Layer	Quantity(Pcs)
Carton1:	220mm(L)×160mm(W)×47mm (H)	-	-	-
Carton2:	250mm(L)×200mm(W)×80mm (H)	-	-	-
Carton3:	320mm(L)×270mm(W)×80mm (H)	2	1	2
Carton4:	450mm(L)×350mm(W)×300mm(H)	1	10	10
Carton5:	600mm(L)×450mm(W)×300mm(H)	1	16	16

Disclaimer: The product design is subject to alternation and improvement without prior notice.

DWIN Technologies Technical Document



Pin#	Signal	Pin#	Signal	Pin#	Signal
Pin1	TMS Bezel+	Pin11	TMS Clock Shield		
Pin2	TMS Bezel Shield	Pin12	TMS Clock-		
Pin3	TMS Bezel-	Pin13	CEC		
Pin4	TMS Bezel+	Pin14	IR2 Bezel-(Optional HDMI 1.4with Ethernet)		
Pin5	TMS Bezel Shield	Pin15	SC2 (22C Serial Clock for DDC)		
Pin6	TMS Bezel-	Pin16	SM (22C Serial Data Line for DDC)		
Pin7	TMS Bezel+	Pin17	DM2/CEC/IR2 Ground		
Pin8	TMS Bezel Shield	Pin18	+5V Power (via SMD)		
Pin9	TMS Bezel-	Pin19	Hot Plug Detect(AI versions)and IR2 Bezel-(Optional HDMI 1.4with Ethernet)		
Pin10	TMS Clock-				

1. Location hole is used as position reference.
 2. Unmarked Tolerance is +/-0.3mm
- Active area is marked in Dash lines

Model		HDW101-001LZ09			
Drawing	A 4	Drawn	G.Y	Date	2022.07.07
Scale	1:1	Review		Date	
Unit	MM	Approval		Date	
DWIN Technologies					