

KC.DA.00159

Antenna Specification

1. Application:

This application shall apply for antenna unit which shall be used such as automotive, conventional communications, smart home, etc..

1. Electrical Specification:

Those specifications were specially defined for customer's model, and all characteristics were measured under the model's handset testing jig .

2-1. Frequency Band:

Frequency Band	MHz
5G	690~960/1700~5000


2-2. Impedance

50 ohm nominal

2-3. VSWR

2-3-1.Measurement frequency points and VSWR value

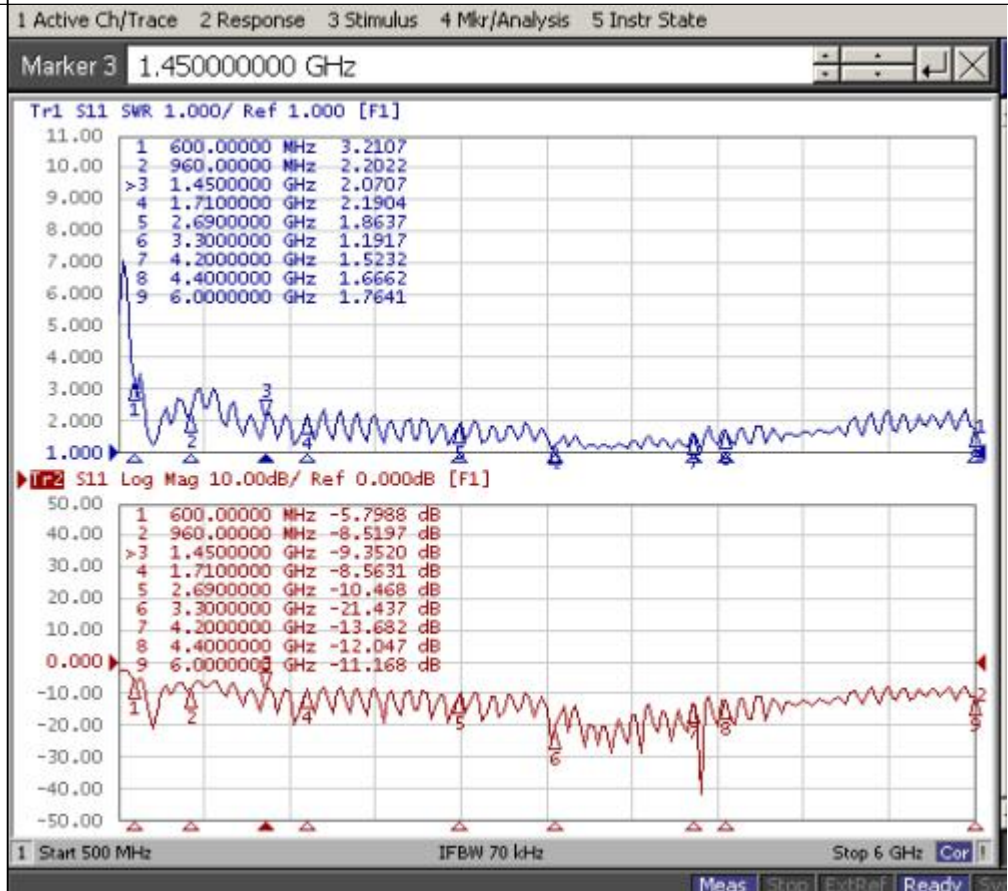
Frequency Band(MHz)	690	960	1710	3300	5000
2-3-3. Typical Value:	3.2	2.2	2.1	1.2	1.9

UNLESS OTHER SPECIFIED TOLERANCES ON : X=± X.X=± X.XX=± ANGLES=± HOLEDIA=±		 TOXU TECHNOLOGY CO., LTD.
SCALE :	UNIT : mm	
DRAWN BY: LI	CHECKED BY: YS	THIS DRAWINGS AND SPECIFICATIONS ARE THE PROPERTY OF KINGRF TECHNOLOGY CO.,LTD.AND SHALL NOT BE REPRODUCED OR USED AS THE BASIS FOR THE MANUFACTURE OR SALE OF APPARATUS OR DEVICES WITHOUT PERMISSION
DESIGNED BY: De wen	APPROVED BY: YS	
TITLE : KC.DA.00159 Antenna Specification		SPEC REV. P0

2-3-4 Measuring Method

1. A 50Ω coaxial cable is connected to the antenna. Then this cable is connected to a network analyzer to measure the VSWR.
2. Keeping this jig away from metal at least 20 cm

2-3-5 Picture



UNLESS OTHER SPECIFIED TOLERANCES ON :		TOXU® 同訊技术	TOXU TECHNOLOGY CO., LTD.
X=±	X.X=±		
ANGLES=±		HOLEDIA=±	
SCALE :	UNIT : mm		
DRAWN BY: LI	CHECKED BY: YS		
DESIGNED BY: De wen	APPROVED BY: YS		
TITLE : KC.DA.00159 Antenna Specification			SPEC REV.
			P0

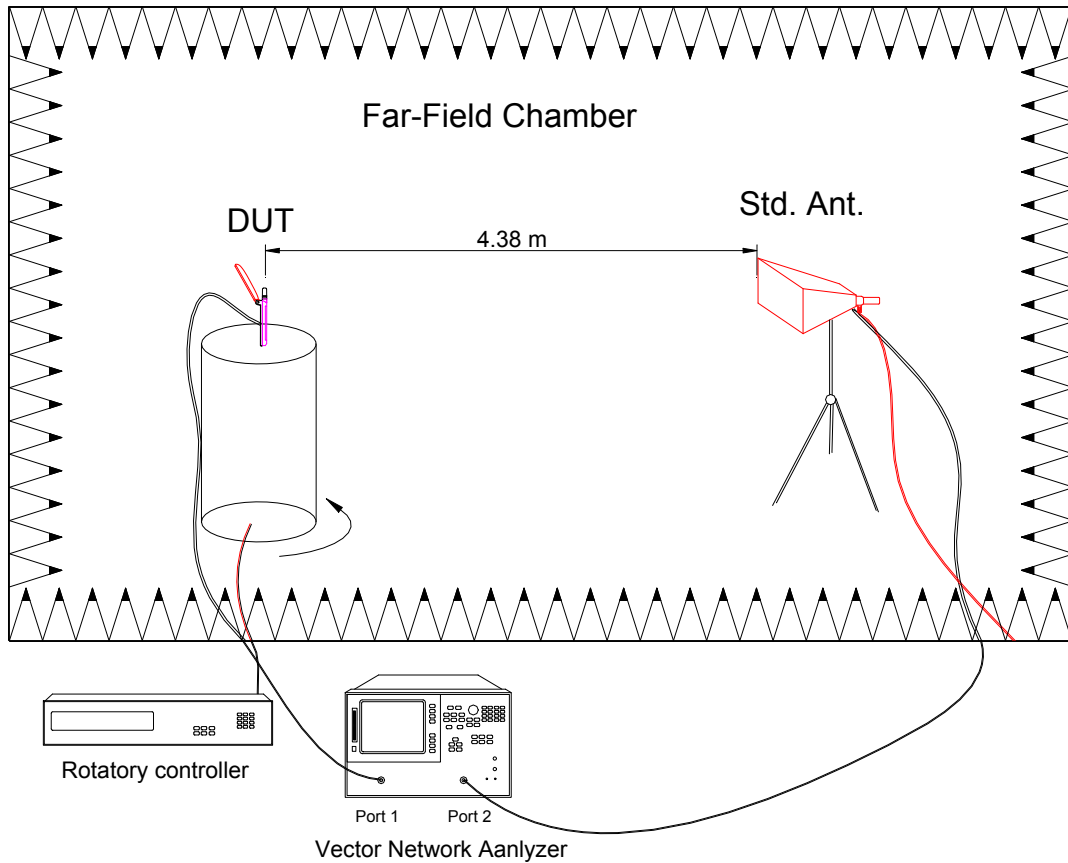
THIS DRAWINGS AND SPECIFICATIONS ARE THE PROPERTY OF KINGRF TECHNOLOGY CO.,LTD.AND SHALL NOT BE REPRODUCED OR USED AS THE BASIS FOR THE MANUFACTURE OR SALE OF APPARATUS OR DEVICES WITHOUT PERMISSION

2-4. Efficiency and Gain

4-5.1 Measure method

1. Using a low loss coaxial cable to link a standard handset jig
2. Fixed this handset jig on chamber's rotator plane
3. Linking jig into network analyzer port and using a probing horn antenna to collect data.
4. Using another standard gain horn antenna to calibrated those data

4-5.2 Chamber definition



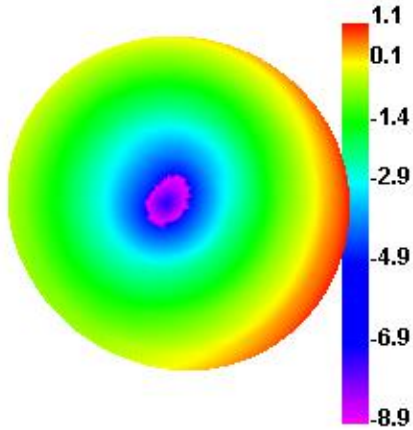
1. An anechoic chamber (7mx4mx3m) which satisfied far-field condition was applied to avoid multi-path effect
2. The quiet room region is 40cmx40cmx40cm at the center of rotator
3. The distance between DUT and standard antenna is 4.38 m
4. Probing antenna (9120D horn antenna) and standard gain horn antenna (BBHA9120 LPF 700MHz ~6GHz)

UNLESS OTHER SPECIFIED TOLERANCES ON :		TOXU® 同讯技术	TOXU TECHNOLOGY CO., LTD.
X=±	X.X=±		
ANGLES=±	HOLEDIA=±		
SCALE :	UNIT : mm		THIS DRAWINGS AND SPECIFICATIONS ARE THE PROPERTY OF KINGRF TECHNOLOGY CO.,LTD.AND SHALL NOT BE REPRODUCED OR USED AS THE BASIS FOR THE MANUFACTURE OR SALE OF APPARATUS OR DEVICES WITHOUT PERMISSION
DRAWN BY: LI	CHECKED BY: YS		
DESIGNED BY: De wen	APPROVED BY: YS		
TITLE : KC.DA.00159 Antenna Specification			SPEC REV. P0

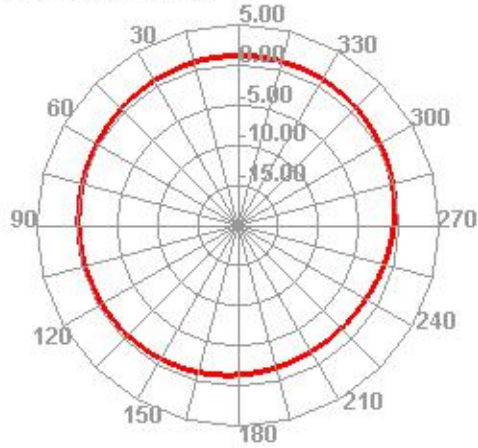
2-4-1 Efficiency and Gain

Frequency Band(MHz)	690-960	1710-2700	2700-3800	3800-5000
Efficiency (%)	>45	>50	>50	>45
Gain (dBi)	>2	>3	>3	>2.5

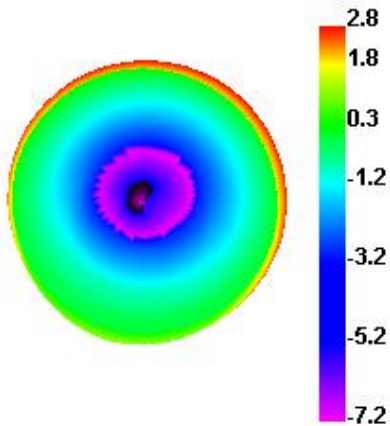
690.000MHz



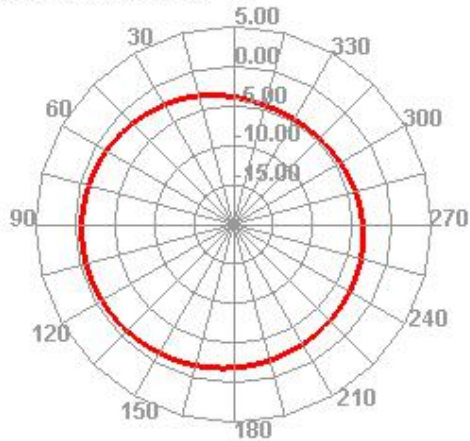
690.000MHz H




960.000MHz

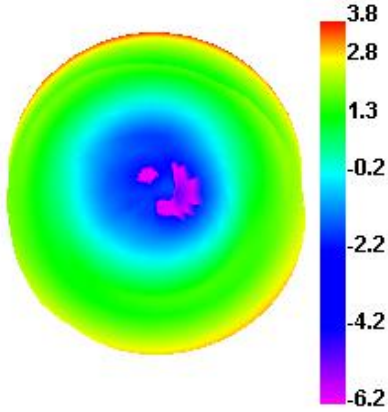


960.000MHz H

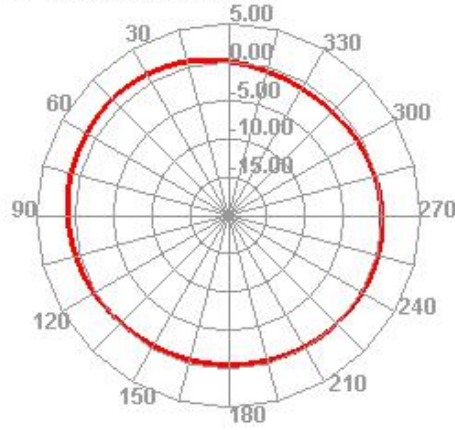


UNLESS OTHER SPECIFIED TOLERANCES ON : X=± X.X=± X.XX=± ANGLES=± HOLEDIA=±		 TOXU TECHNOLOGY CO., LTD.
SCALE :	UNIT : mm	
DRAWN BY: LI	CHECKED BY: YS	THIS DRAWINGS AND SPECIFICATIONS ARE THE PROPERTY OF KINGRF TECHNOLOGY CO.,LTD.AND SHALL NOT BE REPRODUCED OR USED AS THE BASIS FOR THE MANUFACTURE OR SALE OF APPARATUS OR DEVICES WITHOUT PERMISSION
DESIGNED BY: De wen	APPROVED BY: YS	
TITLE : KC.DA.00159 Antenna Specification		SPEC REV. P0

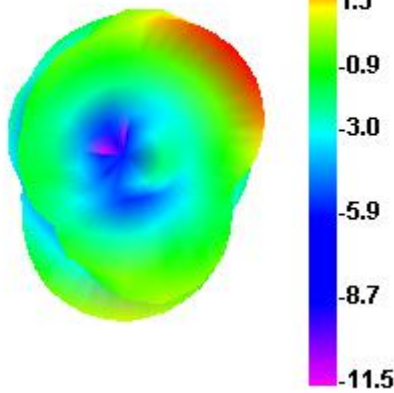
1710.000MHz



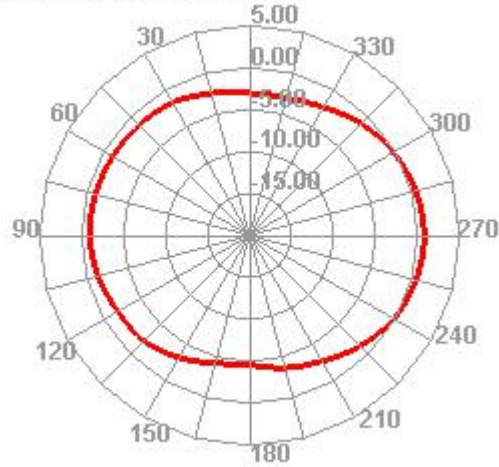
1710.000MHz H



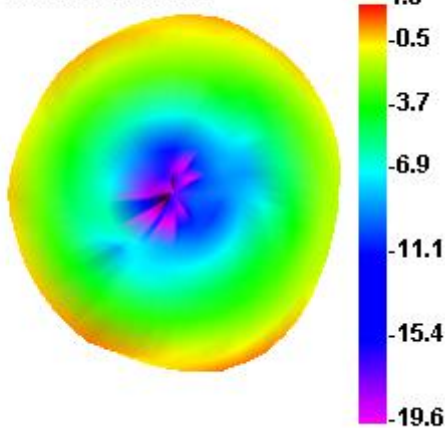
3300.000MHz



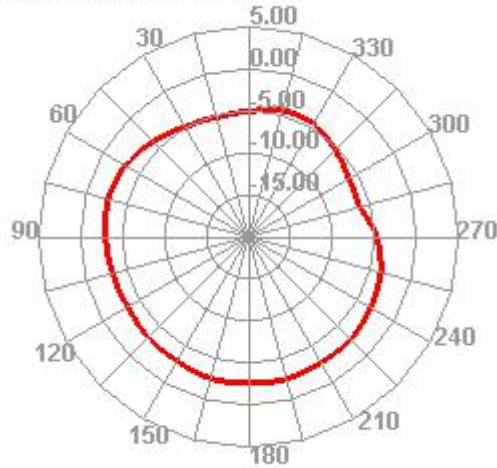
3300.000MHz H



4200.000MHz



4200.000MHz H

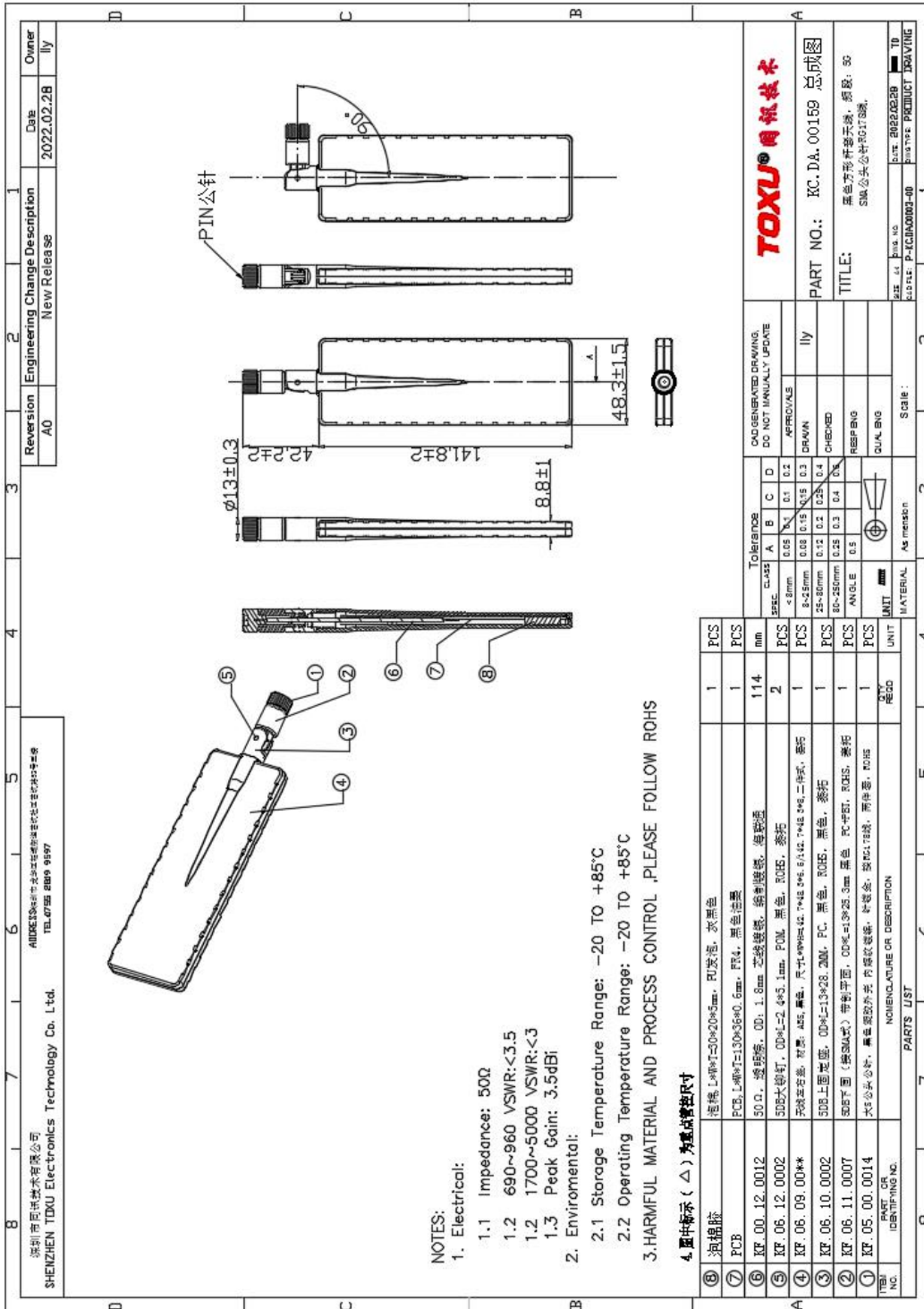


UNLESS OTHER SPECIFIED TOLERANCES ON :		TOXU® 同讯技术	TOXU TECHNOLOGY CO., LTD.
$X = \pm$	$X.X = \pm$		
ANGLES = \pm		HOLEDIA = \pm	
SCALE :	UNIT : mm	THIS DRAWINGS AND SPECIFICATIONS ARE THE PROPERTY OF KINGRF TECHNOLOGY CO.,LTD.AND SHALL NOT BE REPRODUCED OR USED AS THE BASIS FOR THE MANUFACTURE OR SALE OF APPARATUS OR DEVICES WITHOUT PERMISSION	
DRAWN BY: LI	CHECKED BY: YS		
DESIGNED BY: De wen	APPROVED BY: YS		
TITLE : KC.DA.00159 Antenna Specification			SPEC REV. P0

3. Mechanical Specification:

3-1. Mechanical Configuration (Unit: mm)

The appearance of the antenna is according to drawing




UNLESS OTHER SPECIFIED TOLERANCES ON :		TOXU® 同讯技术	TOXU TECHNOLOGY CO., LTD.
X=±	X.X=±		
ANGLES =±	HOLEDIA =±	THIS DRAWINGS AND SPECIFICATIONS ARE THE PROPERTY OF KINGRF TECHNOLOGY CO.,LTD.AND SHALL NOT BE REPRODUCED OR USED AS THE BASIS FOR THE MANUFACTURE OR SALE OF APPARATUS OR DEVICES WITHOUT PERMISSION	
SCALE :	UNIT : mm		
DRAWN BY: LI	CHECKED BY: YS		
DESIGNED BY: De wen	APPROVED BY: YS		
TITLE : KC.DA.00159 Antenna Specification			SPEC REV. P0

3-2. Connector appearance:

SMA-PLUG

3-3.Product photos



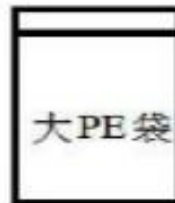
UNLESS OTHER SPECIFIED TOLERANCES ON :			TOXU TECHNOLOGY CO., LTD.
X=±	X.X=±		
ANGLES=±		HOLEDIA=±	
SCALE :	UNIT : mm		
DRAWN BY: LI	CHECKED BY: YS		
DESIGNED BY: De wen	APPROVED BY: YS		
TITLE : KC.DA.00159 Antenna Specification			SPEC REV.
			P0

4 .PACKING INSTRUCTION

一、 labeling requirement :

Buyer	Xx		
Supplier	DongGuan KingRF ELECTRONICS TECHNOLOGY CO.,LTD		
Purchase No.	Xx		
Material Code	Xx		
Product No.			
Quantity/PCS	XXX PCS	Date of production	XXXX/XX/XX
Remark			

二、 Packing requirement:



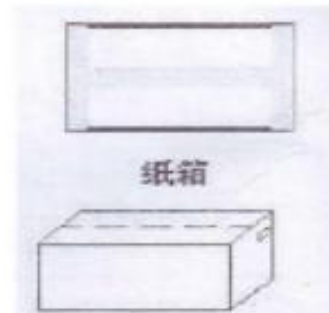
1. inner packing:


Product XX PCS Put in a PE bag;

2. external packing:

Xx PCS Put in a carton;

3. matters need attention:



UNLESS OTHER SPECIFIED TOLERANCES ON : X=± X.X=± X.XX=± ANGLES=± HOLEDIA=±		 TOXU TECHNOLOGY CO., LTD.
SCALE :	UNIT : mm	
DRAWN BY: LI	CHECKED BY: YS	THIS DRAWINGS AND SPECIFICATIONS ARE THE PROPERTY OF KINGRF TECHNOLOGY CO.,LTD.AND SHALL NOT BE REPRODUCED OR USED AS THE BASIS FOR THE MANUFACTURE OR SALE OF APPARATUS OR DEVICES WITHOUT PERMISSION
DESIGNED BY: De wen	APPROVED BY: YS	
TITLE : KC.DA.00159 Antenna Specification		SPEC REV.
		P0